

Product	Document type	Release #	SAP/Doc number	Release date
DVR 670 Series	Release notes	V2.1.3		2014.10.15

Video Recorder 670 Series

1 DVR 670 Series firmware version 2.1.3 (date 2014-09-19)

File name: **600rtseries_2.1.3_140919.bin**

The release includes the following bug fixes:

- In combination with BVC 1.6.2 or higher the below two DST issues are solved:
 - o With DST-ON a one hour time display shift was noticed between DVR400/600 and BVC.
 - o Missing timeline information using DVR600 when zoom-in on the timeline.

Bosch strongly recommends upgrading to the latest firmware to achieve the best possible functionality, compatibility and performance.

2 Update procedure

To update the DVR 670 Series to the latest firmware, please refer to the Video recorder 670 Series Operation Manual, chapter 6.6.5 or follow instructions below:

1. Put firmware v2.1.3 via a PC on the root of a USB memory stick (file name: 600rtseries_2.1.3_140617.bin [2014-09-19])
2. Insert the USB stick into the front USB connector of the DVR
3. Log on as "ADMINISTRATOR" in the local unit
4. Select **Menu** and go to the "System > Configuration" screen
5. Select **Update firmware** to upgrade the DVR software. In this case, the current DVR settings and video will not be deleted or replaced during the update process.

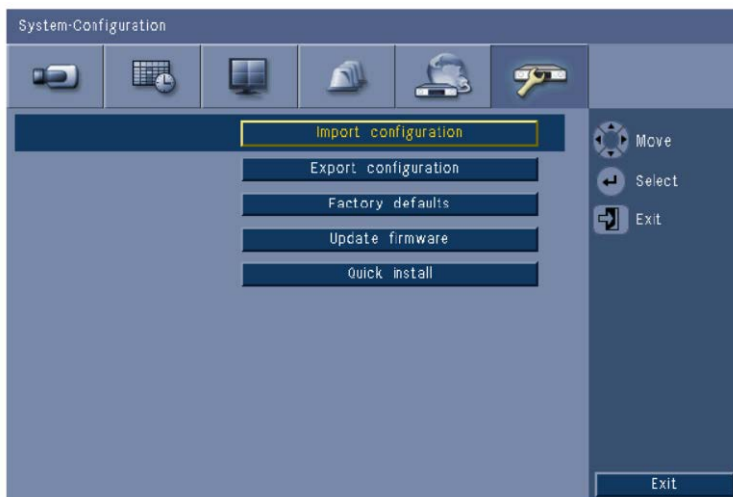


Figure: Update firmware menu



Security Systems

Product	Document type	Release #	SAP/Doc number	Release date
DVR 670 Series	Release notes	V2.1.3		2014.10.15

6. Select **OK** to begin the update process or click **Cancel** to stop and exit.
After the update process is completed you have to press **OK** so that the system will automatically restart.

Alternative a firmware upgrade can be performed via the Web Client:

- Open Internet Explorer and type on the address bar the network IP address of the unit
- Log on by entering the User ID (default ADMINISTRATOR) and Password (default 000000)
- Select the configuration mode by clicking on the "Configuration" button
- Select 'System' and then 'Configuration'
- Browse to the v2.1.3 firmware file name: 600rtseries_2.1.3_140919.bin [2014-09-19]
- Press the "Update" button

Firmware will be automatically updated and unit will be restarted.

3 Recommended PC requirements

The Video Recorder 670 Series is integrated in v3.36 of the Control Center.

The Control Center PC applications require the following minimum configuration:

- Processor: Intel Pentium DualCore, 3.0 GHz or comparable
- RAM memory: 2048 MB
- Free hard disk space: 10 GB
- Graphics card: NVIDIA GeForce 8600 or higher
- Network interface: 10/100/1000-BaseT
- Web browser: Internet Explorer 7, 8 or 9
- Operating System
 - Windows XP (Service Pack 2 or higher) or
 - Windows Vista (Service Pack 2) or
 - Windows 7 (32 bits and 64 bits)

4 DVR 600 Series firmware version history

4.1 Version 2.0.0

File name: 600rt_2_0_0.bin (2012-05-09)

Initial firmware version

Important behavior / know issues:

- Real time playback (25/30IPS) is only possible in Full screen and Quad view
 - Playback in multi-screen in 1IPS
- Playback rights for 'Normal Users'

Security Systems

Product	Document type	Release #	SAP/Doc number	Release date
DVR 670 Series	Release notes	V2.1.3		2014.10.15

- Issue: Web access log-on as 'Normal user' that has rights for playback. Still the playback icon is grayed out and cannot be pressed.
- Solution: You can select additional rights for Play, Search, Export and Alarm acknowledge for a 'Normal user'. However to give additional 'Play' rights you also have to give additional 'Search' rights. You cannot have 'Play' rights without also having 'Search' rights activated.



- Address setting for Pelco P protocol (KB article 6908):
 - Issue: Control ID set in DVR 400/600 for Pelco P protocol should be 1-digit lower than set in dome.
Address setting Pelco protocols:
 - Pelco P address from 1 to 16
 - Pelco D address from 0 to 15
 - Solution: When Pelco P protocol is selected in DVR (menu 'Camera-PTZ') the Control ID must be set one digit lower than set in the dome using Pelco P.
For example:
If in the dome with Pelco P protocol the dome ID address is set to 4, than in the DVR400/600 menu 'Camera-PTZ' the Control ID must be set to 3.
- In this firmware v2.0.0 we discovered that monitor initialisations fails on 1 of 100 power cycles (give green picture on Mon. A/B). A reboot is required to solve this issue.
Recording is not effecting, only monitor outputs are not starting correctly.
- Uploading DVR400/600 firmware via IE gives unexpected error (KB article 6793):
 - Issue: Uploading DVR 400/600 firmware via webpage using IE, can cause unexpected error message "DVR update file contains errors" as result of IE security settings.
 - Solution: Enable "Include local directory path when uploading files to a server".
In IE9 this setting can be found in "tools", "Internet options", "Security", "Custom level", "Miscellaneous", "Include local directory path when uploading files to a server". Enable this setting to make uploading DVR400/600 firmware possible.
- In 2.0.x firmware it is possible to take good HDDs from a failed recorder and stick them into another DVR 670 chassis.

Security Systems

Product	Document type	Release #	SAP/Doc number	Release date
DVR 670 Series	Release notes	V2.1.3		2014.10.15

- The conditions are:
 - Replace the complete HDD set
 - Replacement DVR must have the same number of video inputs
- Is it possible to use DVR w/o HDDs (e.g. use as multiplexers)
 - However if you start-up without an HDD you get an audio alarm (HDD fail), always a RED text indicated a HDD failed on the screen.

4.2 Version 2.0.6

File name: 670series_2.0.6.bin (2012-11-08)

This release includes the following improvement:

- In this version unsigned hard disk drives are supported.
The below drives are released and recommended for use in the DVR670. These are available from Bosch Security Systems as DVR-XSxx0-A Storage Expansion Kits.

500 GB :	WD5000AVCS-632DY1	✓
	WD5000AVDS-63U7B1	✓
	ST3500411SV	✓
1 TB :	WD10EURS	✓
	WD10EUCX-63YZ1Y0	✓
	ST31000526SV	✓
2 TB :	WD20EURS-63S48Y0	✓
	WD2003FYYS-02W0B0	✓
	ST2000VX002	✓

We do not test other drives than indicated above to verify reliability:

- When using non-Bosch drives in DVR670 Series recorders, Bosch can no longer be held liable for any loss or damages or system mal-function resulting from the use of non-Bosch drives.
- Bosch will provide advance exchange and carry in service only on Bosch products. This means that failing DVR670 Series recorders should be returned for repair without non-Bosch drives.
- Should non-Bosch hard disk drives be returned, then Bosch will not be held responsible for loss of these drives or any information recorded on these drives or for any consequential damages.
- Bosch will not be held liable for loss or consequential damages resulting from disclosure of any information stored on these non-Bosch drives.

4.3 Version 2.0.7

File name: 670series_2.0.7.bin (2013-02-08)

This release includes the following improvement:

- Removed some wanIP providers that are not available anymore to solve issues with some DynDNS providers

Security Systems

Product	Document type	Release #	SAP/Doc number	Release date
DVR 670 Series	Release notes	V2.1.3		2014.10.15

- Corrected web site for DDNS server 'sitelutions'.
- Solved issue that sometimes after several connection losses the system does not allow to reconnect again until power cycling the DVR.
- Security update for mobile devices.

4.4 Version 2.0.8

File name: 670series_2.0.8.bin (date 2013-03-20)

This release includes the following improvement:

- Firmware supports use of DVR670 in BVC 1.4 Sr2

4.5 Version 2.1.0

File name: 600rtseries_2.1.0_130606.bin (date 2013-07-07)

This release includes the following improvement:

- Integration of maximum 4 IP cameras in the DVR 670 Series (for more info see *).
- New archive player v1.0.10.1 added to playback also archived IP cameras. This player is integrated in the firmware and will be put on USB stick when making an archive.
- Issue is solved that an export using web interface, sometimes hangs at 0%
- Compatible with the new iPhone DVR Viewer APP v1.0.3 or higher.
 - o Old iPhone DVR Viewer v1.0.1 APP must be upgraded because this version is **NOT** compatible with this new v2.1.0 firmware.
- Security improvement.
- Support new DVR670 hardware (update of memory chip).
 - o Units with this new hardware (identified on service code number 03) cannot be downgrade to a previous firmware version. This will be blocked and a message will display to inform the customer about this. The new firmware is compatible with the previous hardware.
 - o Service code is digit 13 and 14 of the 18 digit Serial Number indicated on product label. See bold part in following example S/N 404645232401**03**0001

* Main features and boundaries for the IP integrations:

- Input for maximum 4 SD Bosch IP cameras on a single DVR 670. The maximum 16 channels can be optimally divided for up to 4 IP cameras and the balance as analog cameras.
- The IP cameras are configured via the camera web client.
- An HD camera can be used for recording SD stream 2 for eventual recording and playback on the DVR. Display the live HD stream with Bosch Video Client.
- The IP feature will be available on a DVR 670 platform using a simple FW upgrade, and is free of charge (no license required).

Product	Document type	Release #	SAP/Doc number	Release date
DVR 670 Series	Release notes	V2.1.3		2014.10.15

- The DVR does not directly control the camera stream (IPS or resolution) and will only record the available stream (configured on the camera).
- Live and playback video of connected IP cameras (SD streams) can be shown on a local DVR monitor A, via Web client and supported PC applications.
- PTZ and fixed SD cameras can be recorded, however only standard PTZ commands and presets (go to, set, clear) are available (i.e. there is no AUX, iris and focus control). To enable PTZ for IP cameras please select RS232 or RS485 PTZ communication protocol for the selected channel.
- Supported resolutions :

	IPS	Resolution
NTSC	≤ 30 IPS	≤ 702 x 576 (SD/D1/4CIF)
PAL	≤ 25 IPS	≤ 702 x 480 (SD/D1/4CIF)
- The following functions are not supported:
 - o Event triggered recording (motion and/or input)
 - o Viewing on local Mon.B
 - o Live and recorded audio from an IP camera
 - o Previous IP cameras firmware 5.60 (please use 5.52, 5.70 or 5.80).
- To display the archived video from the IP cameras you need to use the latest Archive Player v1.0.10.1. This version of the player is incorporate in the DVR firmware v2.1

4.6 Version 2.1.1

File name: 600rtseries_2.1.1_140527.bin (date 2014-05-27)

The releases includes the following bug fixes:

- Switching monitor A/B from VGA to HDMI via front panel keys is corrected. Procedure is described in the DVR670 Operation Manual in chapter 3.2.1
- Small recording gabs in configurations with 1IPS and high quality recording has been solved.
-

4.7 Version 2.1.2

File name: 600rtseries_2.1.2_140617.bin (date 2014-06-17)

This release includes the following improvement:

- When a unit detects a 'HDD error', the DVR will automatically reboot so that it starts recording again. If the HDD is defective and needs to be replaced, a red flashing warning message will be displayed and the system buzzer will sound by default.

The release includes the following bug fixes:

- Switching between monitor A/B from VGA to HDMI via front panel keys is corrected. Procedure is described in the DVR670 Operation Manual in chapter 3.2.1



BOSCH

Security Systems

Product	Document type	Release #	SAP/Doc number	Release date
DVR 670 Series	Release notes	V2.1.3		2014.10.15

- Small recording gaps in configurations with 1IPS and high quality recording has been corrected.