

Easy Series Intrusion Control Panel

Selection Guide



BOSCH

Invented for life



Content



3	1. Core Facts
	2. System Overview
5	2.1 Easy Series Control Center
6	Easy Series Display States
7	2.2 Control Panel and Devices
10	2.3 Easy Series Wireless Devices
14	3. Alarm Communication
16	4. False Alarm Reduction
18	5. Features and Benefits
23	6. Programming



Easy Series is a revolutionary intrusion control panel for homes and small businesses that is extremely simple to install and operate. It supports the cutting-edge wireless SecurityNetwork technology wLSN.

Applications:

- ▶ Intrusion detection
- ▶ Fire detection
- ▶ Panic/Medical
- ▶ Water/temperature detection
- ▶ Supervision of freezers, fridges, central heating, etc.
- ▶ Comfort functions (control of lighting, garage doors, shutters, etc.)

Easy Series Core Facts:

- ▶ Features and capacity for private homes and small businesses
- ▶ Stylish control center with extraordinary functionality
 - Simple operation through integrated RFID reader
 - Full voice support in native language
 - Icon-based, text-free display
- ▶ Various arming options (PIN code, RFID token, key fob, remote arming/disarming)
- ▶ Numerous features to reduce false alarms
 - Intelligent Threat Assessment
 - Audio alarm verification
 - Cross Zoning
 - Graduated Annunciation
- ▶ Extremely simple documentation
- ▶ Flexible and personalizable features
 - Guard code
 - Unattended operation
 - Inactivity timer

4 | 1 Core Facts

- ▶ wLSN enables:
 - Two-way communication for high reliability and security
 - Auto configuration for easy and quick programming
- ▶ wLSN RF technology:
 - 868 MHz security band
 - Multi-channel operation (8 channels)
- ▶ Easy wLSN RF-signal level test at:
 - RF Diagnostic Tool
 - RF devices
- ▶ Several integrated alarm transmission options:
 - Voice dialer
 - Digital dialer (SIA, Contact ID, Fast Format)
 - Personal Text Messaging: SMS (TAP)
- ▶ Remote control capability via DTMF and/or RPS (Remote Programming Software)
- ▶ 8 on-board zones, expandable to up to 32 wired or wireless zones plus 20 key fobs
- ▶ Up to 4 control centers
- ▶ 4 on-board outputs plus up to 4 wireless outputs
- ▶ Up to 20 users: each user gets his own PIN (RFID token and RF key fob optionally available)
- ▶ 500 time/date stamped history events
- ▶ 5 years battery life for most of the wLSN devices
- ▶ EN 50131-3 grade 2 and EN 50131-5-3 grade 2
- ▶ Broad band IP communication and GSM/GPRS support

2 System Overview



2.1 Easy Series Control Center

The control center combines audio and visual information.



- ① Specific buttons [1+2] to initiate police, fire or medical alarm. The other buttons can be used to enter the user maintenance [3], to turn chimes on or off [4], for volume control [5]
- ② This button gives access to a help menu. It can also be used to turn the system on.
- ③ The control center senses the user's presence. If the system experiences any problems while he is away, the control center informs him as soon as he approaches.
- ④ An integrated speaker provides operating support in native language. Along with the built-in microphone, two-way voice communication is enabled.
- ⑤ The internal RFID reader can be used to turn the system on and off, to silence alarms and to enter the user menu.

Easy Series Display States:



The system is off



There is a system problem



One or more points are defective



Exit delay in progress



The system is on (occupied)



The system is on (unoccupied)



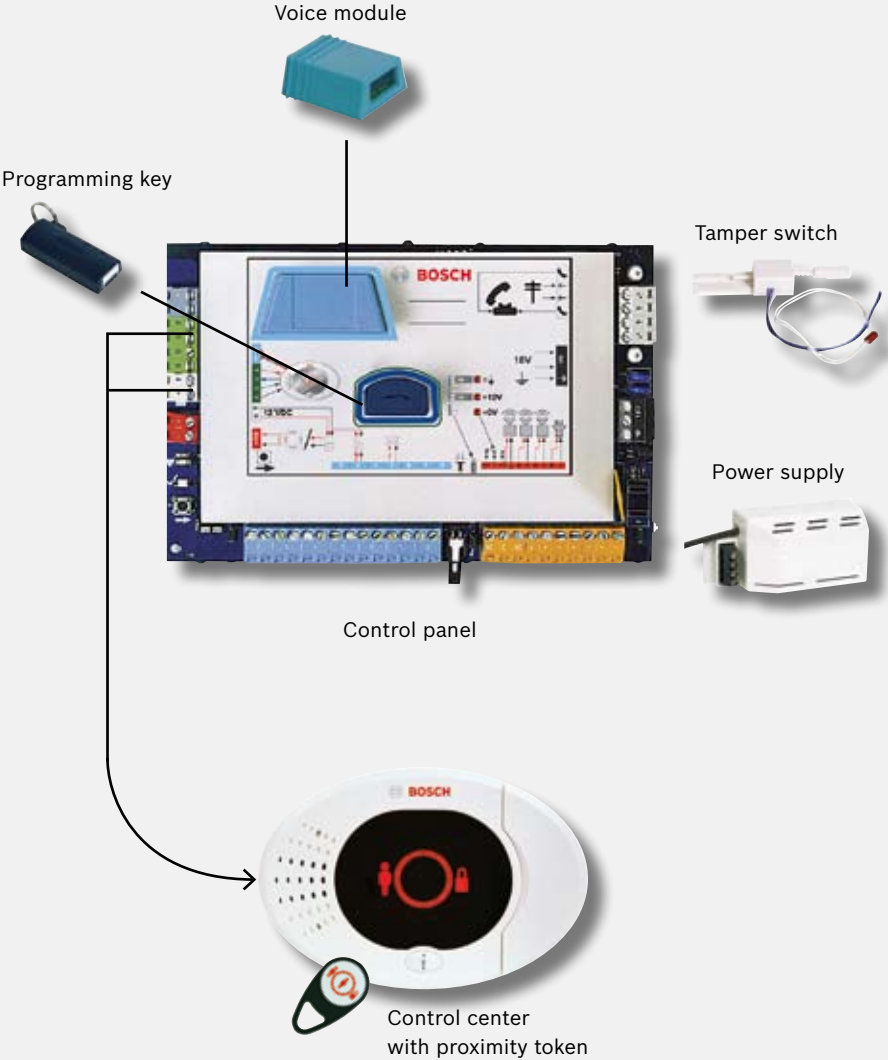
Fire or intrusion alarm
(system is off)



Fire or intrusion alarm (system is on)



2.2 Control Panel and Devices:



Easy Series Control Panel and Devices:

Control Panel



The Easy Series control panel is destined for usage in small enterprises and residential buildings. The system can be used for several applications such as intrusion alarms, fire detection and medical emergency calls.

Proximity Token and Card



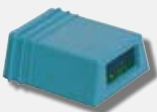
The system can be controlled by a user-specific token.

Control Center



For specification please refer to section “Control Center” on page 5.

Voice Module



The voice module contains all the language sequences in the respective language. More than 30 languages are available.

Programming Key



Uploads and downloads programming information. The programming key is used to quickly program a group of control panels with the same characteristics, e.g. in large projects, and for data backups.

Tamper Switch



The combined tamper switch senses open enclosure as well as removal from the wall. It contains a wire loop that can accommodate additional tamper outputs.

Power Supply



0-250 VAC wire-in power supply for hardwired primary power requirements.

2.3 Easy Series Wireless Devices:

wLSN Hub (RF transceiver)



The wLSN hub supports up to 32 wLSN points plus 4 wLSN outputs and 20 key fobs and has no external antenna. Due to its small size, it can be integrated unobtrusively into the living space.

wLSN Key Fob



The compact designed 5-button wireless key fob is used to arm/disarm the system and has a panic function. It also provides comfort functions, such as control of garage doors and lighting. Two LEDs give feedback on the panel status. Moreover, it has a flashlight function.

wLSN Installation Tool



The wLSN installation tool helps to determine the best spots where to install the wLSN devices. It provides signal strength reading, Signal-to-Noise ratio and Packet Error Rate measurement.

wLSN Glass Break Detector



The wLSN glass break detector uses dual acoustic technology. The audio signal and the pressure wave are considered to determine whether glass has been broken. Its range is up to 7.6 meters. There is no need to mount it directly on the glass, so it can be integrated unobtrusively into the living space.

wLSN PIR Motion Detector

The pet immune high quality wLSN PIR motion detector has a high catch performance and covers 12 x 12 meters. As there is no need to adjust the detector, misalignment is impossible.

wLSN Dual Motion Detector MW/PIR

The pet immune high quality wLSN dual motion detector PIR/MW provides two detection technologies for difficult environments. It has a high catch performance and covers 11 x 11 meters. As there is no need to adjust the detector, misalignment is impossible.

wLSN Siren (Indoor)

The 85 db wLSN indoor siren gives local warning for inhabitants and deters intruders. It is two-way RF controlled by the system and can be integrated unobtrusively into the living space.

wLSN Siren (Outdoor)

The 102 db wLSN outdoor siren gives local warning for inhabitants and deters intruders. It is two-way RF controlled by the system.

2.3 Easy Series Wireless Devices:

wLSN Relay Module



The 2A/28V wLSN relay module (DC/AC) has one zone input for security or comfort applications. The connected devices (e.g. garage doors, lighting) can be controlled via the wLSN key fob and/or by events (e.g. alarms).

wLSN Smoke Detector



The wLSN smoke detector provides optical detection of smoke emission. It has a test function for easy testing. An integrated sounder base alerts in case of a fire.

wLSN 3405 Inertia Detector



The wLSN inertia detector notices opening of or violent attacks against doors or windows. Two sensitivity options can be configured. The magnet can be mounted either on the left or right hand side of the detector. The detector can be integrated unobtrusively into the living space.

wLSN water/temperature detector



The wLSN water/temperature detector provides protection against water leak damages. It also detects temperatures below +7°C degrees.

wLSN Door-Window Contact

The wLSN door/window contact contains two reed contacts to supervise doors and windows. It provides an additional zone input to connect a second contact. The magnet can be mounted either on the left or right hand side of the detector.

wLSN Mini Door-Window Contact

The wLSN mini door/window contact contains two reed contacts to supervise doors and windows. The magnet can be mounted either on the left or right hand side of the detector. Because of its very small size, it can be integrated unobtrusively into the living space.

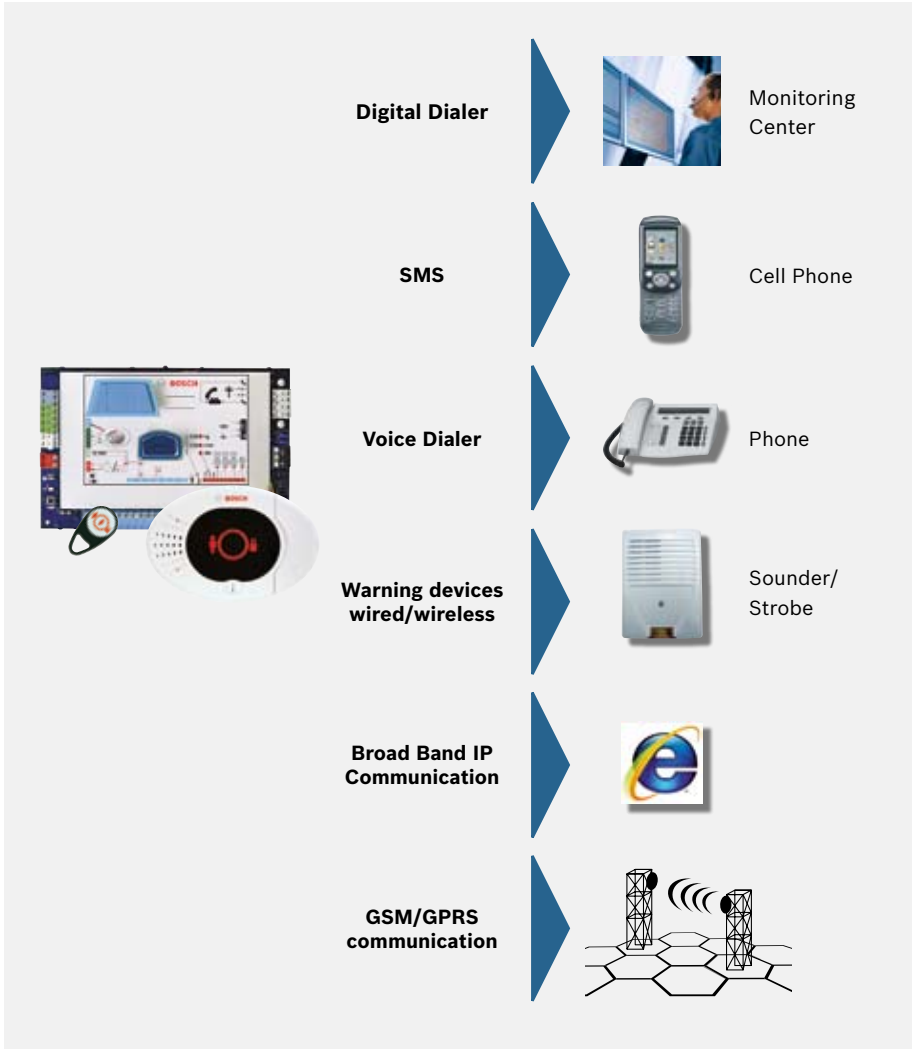
wLSN Recessed Door-Window Contact

The wLSN recessed door/window contact supervises doors and windows invisibly. It is mounted inside of doors, windows and the respective frames.

3 Alarm Communication



Different Ways of Alarm Notification:



Different Ways of Alarm Transmission:

Digital Dialer

This digital communicator sends reports to a monitoring center. Based on the type of report received, the monitoring center will follow a set of predetermined actions. The supported communicator formats are SIA, Contact ID, and Fast Format.



Voice Dialer

This format is used whenever event reporting requires a preset voice message to be delivered via telephone. This feature can be used for both monitoring center reporting and personal messaging.



Personal Text Messaging (SMS)

When configured, this personal messaging format can be used to inform you about alarms, system problems and status.



Sounder/Strobe (wired or wireless)

These warning devices provide an indication whenever an alarm has occurred at the protected premises.



Optional alarm transmission

- ▶ Broad band IP
- ▶ GSM/GPRS

4 False Alarm Reduction



Different Ways of False Alarm Reduction:

Graduated Annunciation

In case a security point is violated, the indication for an alarm release gradually increases. The system increases the control center volume, changes the display animation and eventually activates the warning devices before an actual alarm report is sent to the monitoring center (reports may still be aborted or cancelled by the user)

Cross Zoning (a.k.a. Sequential Verification)

When two or more input sensors activate within a specified time period, an intrusion alarm is considered verified: e.g. if a door sensor and a motion detector both initiate an alarm, the system sends a verified alarm report (otherwise, an unverified alarm report is sent).

Intelligent Threat Assessment

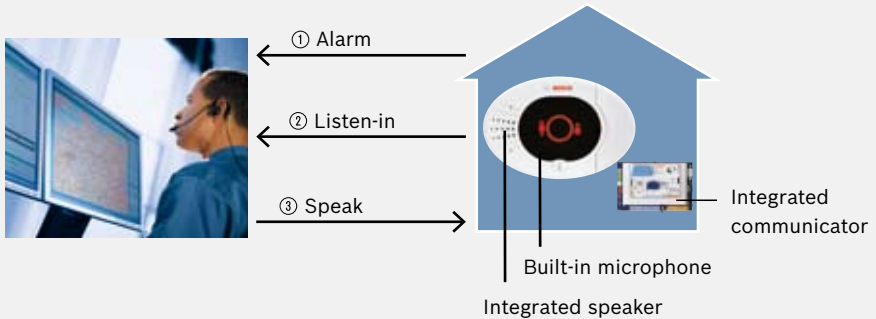
Based on its current level of protection, input device types, input conditions, and accumulated fault count, the control panel assesses the potential threat. If the threat reaches a specific level, the system sends a verified alarm report (otherwise, an unverified alarm report is sent).

Two-Way Audio Alarm Verification

When an alarm occurs, there is the possibility of two-way voice communication. For details please refer to page 17.

Audio Alarm Verification

Each control center includes a speaker and a microphone. In case of an alarm, the panel transmits the message to a monitoring center. The operator can then immediately initiate a phone connection to your customer's panel and listen into his premises, so the situation can be verified, e.g. corroborate an intrusion attempt or a false alarm caused by the user. A communication between the person in the premises and the monitoring station can be established and helps to reduce unnecessary costs due to (e.g.) police interventions.



Example:

- 1 Panel transmits the initiated alarm to the receiving station.
- 2 Monitoring center personnel listens into the premises and distinguishes between an alarm and a false alarm.
- 3 The personnel can speak to the premises and the other way around. In case of an accidental alarm, customers provide previously defined codes to identify themselves as authorized users.

The customers are also able to listen into their premises whenever they like via a telephone call (e.g. as baby phone function).

5 Features and Benefits

wLSN

Features	Benefits Installer	Benefits User
No wiring	<ul style="list-style-type: none">• Fast and easy installation• Lower installation costs	<ul style="list-style-type: none">• No holes made through walls or ceilings• Unobtrusive installation• Lower installation costs
868 MHz Security band (EMEA)	<ul style="list-style-type: none">• Very reliable (no interference from other RF systems)• Competitive advantage	<ul style="list-style-type: none">• Very reliable• No interference from other RF systems (e.g. baby monitors, cordless phones etc.)
Multi-channel operation (8 channels)	<ul style="list-style-type: none">• Higher system robustness• Fewer service calls	<ul style="list-style-type: none">• Higher reliability - and system robustness (no interference from a neighbor's RF alarm system)
Two-way communication	<ul style="list-style-type: none">• Installations are predictable• Higher security, robustness and reliability	<ul style="list-style-type: none">• Higher security, robustness and reliability key fob feedback LEDs provide high confidence in correct operation
Auto configuration	<ul style="list-style-type: none">• Easy and quick programming/configuration	<ul style="list-style-type: none">• Lower installation costs
Signal strength indication	<ul style="list-style-type: none">• Easy and quick verifying of RF- signal strength before mounting• Installations are predictable	<ul style="list-style-type: none">• Reliability
Wireless output devices	<ul style="list-style-type: none">• Additional business applications/opportunities• Competitive advantage	<ul style="list-style-type: none">• Comfort and security applications via key fob (e.g. control of garage doors, lighting, etc.)
Up to 5 year battery life	<ul style="list-style-type: none">• Long-lasting system reliability• Fewer service calls	<ul style="list-style-type: none">• Less interruptions through security company and less costs



Control Center

Features	Benefits Installer	Benefits User
Innovative design	<ul style="list-style-type: none"> Competitive advantage 	<ul style="list-style-type: none"> Matches your interior Fits perfectly into the living space
High-contrast, multicolor, icon-based, text-free display	<ul style="list-style-type: none"> Competitive advantage 	<ul style="list-style-type: none"> Easy operation Better overview Intuitive operation
Integrated RFID reader	<ul style="list-style-type: none"> Price advantage 	<ul style="list-style-type: none"> Fast and easy system operation No extra costs for an additional device No code has to be memorized High security
Integrated motion detector	<ul style="list-style-type: none"> Competitive advantage 	<ul style="list-style-type: none"> Keypad gives important system information as soon as user approaches
Built-in microphone and speaker	<ul style="list-style-type: none"> Two-way voice verification 	<ul style="list-style-type: none"> Immediate assistance from the receiving station Easy possibility to verify alarms
Full voice support in native language	<ul style="list-style-type: none"> Simple orientation within menu 	<ul style="list-style-type: none"> Easy operation
Quiet control center mode		<ul style="list-style-type: none"> No annoyance through entry delay annunciation, e.g. in the bedroom

Additional Features

Features	Benefits Installer	Benefits User
Inactivity timer	<ul style="list-style-type: none"> • Status update of panel usage 	<ul style="list-style-type: none"> • Higher service satisfaction
Guard code	<ul style="list-style-type: none"> • Additional business applications and opportunities 	<ul style="list-style-type: none"> • Direct and quick supervision of the monitored place after an alarm by professional staff • Security guards can not enter premises without alarm notification
Unattended operation	<ul style="list-style-type: none"> • Time saving when analyzing End-User operations 	

Operation

Features	Benefits Installer	Benefits User
Token		<ul style="list-style-type: none"> • Extremely safe • If one gets lost, it's replaceable by another • Ease of operation
Single-button operation		<ul style="list-style-type: none"> • Quick arming • Ease of use
Full remote phone control	<ul style="list-style-type: none"> • Quick support for end-users • Ease of maintenance 	<ul style="list-style-type: none"> • Remote information and operation • Ease of use • Remote controlling of panel status
Individual text recordings for points and outputs		<ul style="list-style-type: none"> • Ease of operation
Single-button system test	<ul style="list-style-type: none"> • Easier maintenance 	<ul style="list-style-type: none"> • Lower service costs
Force protection		<ul style="list-style-type: none"> • Bypassing of opened points possible
Custom protection		<ul style="list-style-type: none"> • Arming with specific open points (e.g. windows of sleeping rooms)

Installation

Features	Benefits Installer	Benefits User
Integrated bubble level	<ul style="list-style-type: none"> • Horizontal installation of keypad assured 	
45° colored terminal strips	<ul style="list-style-type: none"> • Easy installation • Optimal access for wires 	
Covered PCB	<ul style="list-style-type: none"> • No short circuits caused by wires • Easy installation through detailed description on the cover plate • ESD protected 	

Programming

Features	Benefits Installer	Benefits User
Programming via phone or laptop either remotely or on site	<ul style="list-style-type: none"> • Remote programming and maintenance • Remote support for technician on site • Fast and easy programming 	<ul style="list-style-type: none"> • Saves money • Quick support in case of a malfunction
Programming and ROM update keys	<ul style="list-style-type: none"> • Convenient programming for big projects with several panels • Data backup 	<ul style="list-style-type: none"> • Lower programming costs
Auto configuration via country code	<ul style="list-style-type: none"> • Country-specific requirements already pre-programmed • In many cases no additional programming necessary 	<ul style="list-style-type: none"> • Lower programming costs

False alarm reduction

Features	Benefits Installer	Benefits User
False alarm reduction features (for details see p.15)	<ul style="list-style-type: none"> • Satisfied customer 	<ul style="list-style-type: none"> • Fewer false alarms • Higher confidence in system reliability • Cost saving

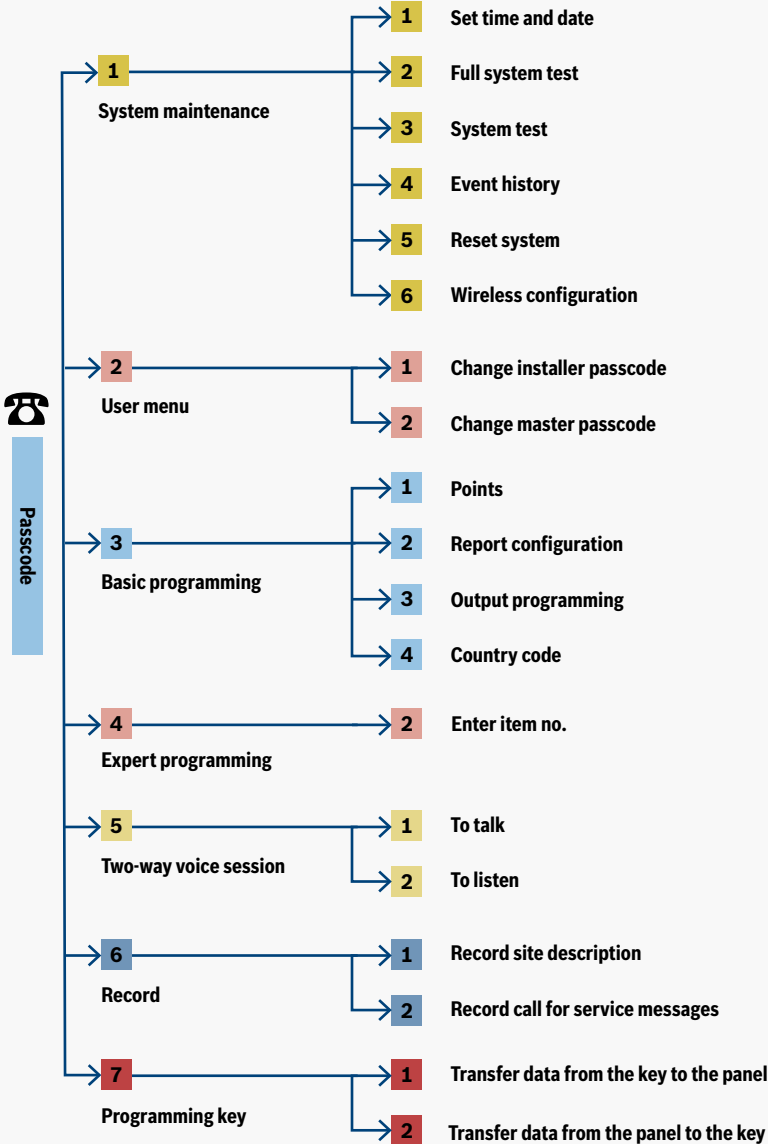
Alarm transmission

Features	Benefits Installer	Benefits User
Integrated voice dialer	<ul style="list-style-type: none"> • No extra costs 	<ul style="list-style-type: none"> • No extra costs for additional devices • Alarm transmission to individual destinations, e.g. friends, neighbors • No obligatory connexion with the receiving center
Integrated digital dialer Formats: SIA, Fast Format, Contact ID	<ul style="list-style-type: none"> • Messages can be recognized by almost every receiving station • No extra costs 	<ul style="list-style-type: none"> • No extra costs for an additional device
Personal Text Messaging (SMS)	<ul style="list-style-type: none"> • Competitive advantage • No extra costs for additional devices 	<ul style="list-style-type: none"> • No extra costs for additional devices • Alarm notification at any time and place
Optional GSM/GPRS	<ul style="list-style-type: none"> • No PSTN phone line needed 	<ul style="list-style-type: none"> • No PSTN phone line needed • Works even in remote areas like weekend homes
Broad band IP Communication	<ul style="list-style-type: none"> • Higher security, robustness and reliability • Flexibility and better access to the panel program 	<ul style="list-style-type: none"> • No need of installation of additional telephone lines -> cost saving

6 Programming and Operation



Easy Series Installer Menu Tree:





Bosch Security Systems

To learn more about our product offering,
please visit www.boschsecurity.com
or send an e-mail to
emea.securitysystems@bosch.com

© Bosch Sicherheitssysteme GmbH, 2008
Modifications reserved
Printed in Germany | 08/08 | HOL
AS-OT-en-55_4998145964_09