

SE2 Series



Security Systems

EN | User Guide & Setup Instructions
Transmitters

BOSCH

FCC Notice

This device complies with Part 15 of the FCC Rules and with RSS-210 of Industry and Science Canada.

Operation is subject to the following two conditions:

- This device may not cause harmful interference,
and
- This device must accept any interference received,
including interference that may cause undesired
operation.

FCC ID: ESV-0117-1

Canada: 1249 102 643

1.0 Part I - User Guide

(For Distribution to All SE Users)

1.1 Introduction

The SE2 Series Transmitters are personal transmitters designed to work with the Security Escort system. When initiated, a signal identifying you and your location is sent to the Security Escort monitoring station. The SE2 can also be tested within sight of a receiver or siren/strobe by the user.

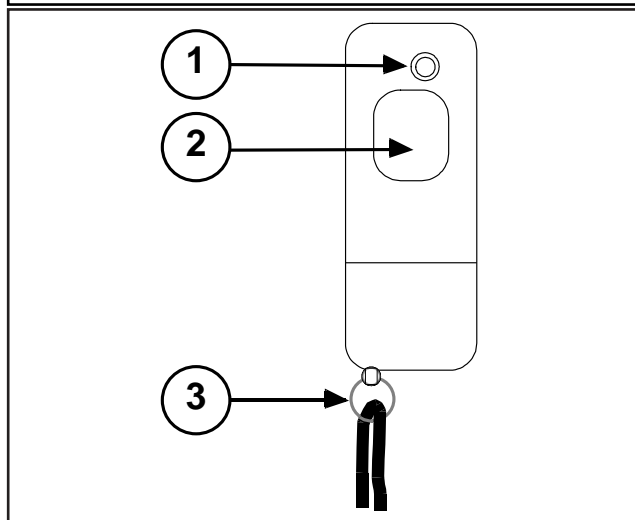


There are several SE2 models available, each with optional features. Check boxes are provided in this document for your security department to indicate which features are available on your transmitter.



The Security Escort system is **not** a substitute for safe behavior. System users should not take personal risks under the misconception that the system provides protection that compensates for taking such risks.

Figure 1: SE Transmitter



1 - Test button

2 - Alarm button

3 - Lanyard

1.2 Using the SE2 Transmitter

This feature is enabled on this transmitter.

This feature is not enabled on this transmitter.

1.2.1 Standard Operation

Transmitting a Manual Alarm

To send an alarm, press and hold the **Alarm** button for 1 second. The transmitter sends an alarm signal to the central console. With some SE2 models, you can also visually confirm the signal if done in sight of a receiver (receiver lights the red LED). After a manual alarm is initiated, the auto tracking feature begins. The transmitter sends a signal to the central console every 7 sec., updating your location. To reset the transmitter after a manual alarm is initiated, perform a test as described in *Testing the Transmitter*.

Testing the Transmitter

To test your transmitter, stand in sight of a siren/strobe or a receiver. While holding down the **Test** button, press the **Alarm** button until you hear an audible tone. A test transmission is sent to the central console. Also, the strobe on an outdoor siren/strobe or the green LED on a receiver illuminates.



There might be a brief delay of 2 sec. to 3 sec. before the flashing light appears.

If you do not receive confirmation of a successful test transmission (such as the strobe on a siren/strobe or the green LED on a receiver not illuminating), try the test again. If there is still no confirmation, take the transmitter to the security department.

1.2.2 Optional Features

Man-Down Alarm Feature

With the man-down feature enabled, the transmitter alarms whenever the transmitter (you) is in a prone position (60° from upright). The transmitter emits an audible tone upon sensing the prone position, and initiates the auto tracking feature. To reset the transmitter after a man-down alarm is initiated, return the transmitter to the upright position and perform a test as described in *Section 1.2.1 Standard Operation*.

Lanyard Snatch Alarm Feature

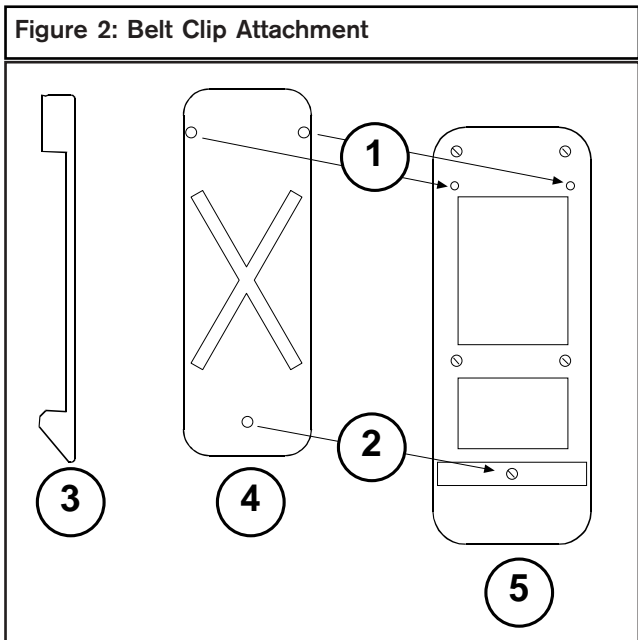
With the lanyard snatch alarm feature enabled, the transmitter sends an alarm signal to the central console and initiates the auto tracking feature when the lanyard pin is pulled out of the unit. To reset the transmitter after a lanyard snatch alarm is initiated, reinsert the lanyard pin and perform a test as described in *Section 1.2.1 Standard Operation*.

1.2.3 Wearing the Transmitter

The transmitter comes with a clip which can be worn over a pocket or belt, or be secured to a belt. Secure the clip to the transmitter (screws provided) at the two top positions to use it as a clip.

To use the clip securely on a belt, attach it at the third location at the bottom. Use the screw already securing the battery door.

The clip is designed to wear on a security type utility belt. If worn on a thin belt, be aware that such a loose fitting can cause the transmitter to activate the man-down alarm (if enabled) when there is too much loose movement.



- 1 - Must use
- 2 - Optional
- 3 - Side view of clip
- 4 - Clip
- 5 - Back of transmitter

2.0 Part II - Setup Instructions

(For Security Department Use Only)

2.1 Models and Features

The various SE2 models and their features are identified in *Table 2*.

Feature	Model				
	SE2S	SE2U	SE2M*	SE2S-SN	SE2U-SN
Man-Down					
Supervision Tracking					
Lanyard Snatch					
Auto Tracking					
Silent Manual Alarm					
Low Battery Indication					

* SE2M is only used for system testing and does not generate a system alarm.



Before distributing the attached *User Guide*, place an "X" in the box next to each feature enabled on the transmitter.

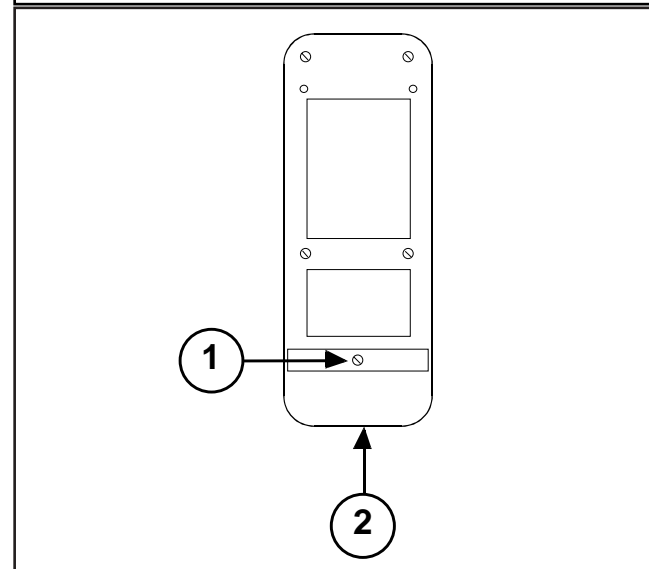
2.2 Removing the Cover

The Man-Down, Supervision Tracking, and Lanyard Snatch features are controlled by the jumpers located next to the battery compartment.

To remove the cover:

1. Remove the belt clip (if used).
2. Remove the retaining screw on the back of the enclosure (see *Figure 3*).
3. Using a flat-head screwdriver, pry the lower part of the front cover away from the rest of the enclosure.

Figure 3: Back of Transmitter



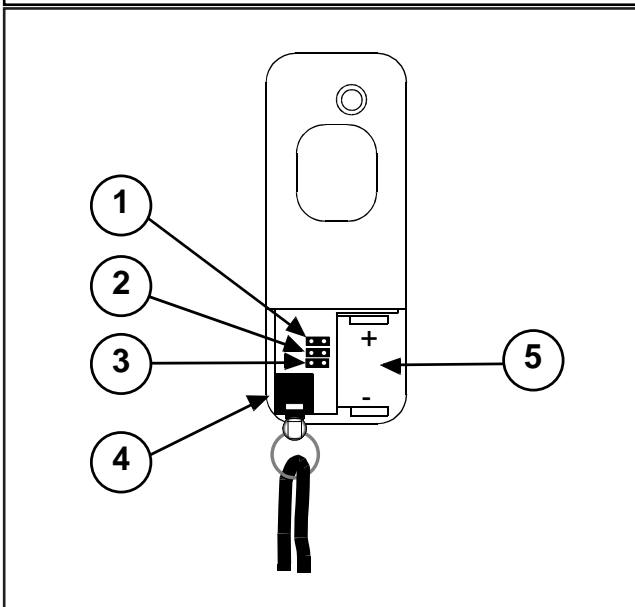
1 - Retaining screw

2 - Pry here

2.3 Enabling/Disabling Features

Figure 4 shows the location of the specific jumper for each feature. Note that the lanyard-snatch jumper and lanyard switch are only included on the SE2M, SE2S-SN, and SE2U-SN models.

Figure 4: Internal Components



- 1 - Lanyard switch
- 2 - Man-down jumper
- 3 - Supervision jumper
- 4 - Lanyard jumper
- 5 - Battery compartment

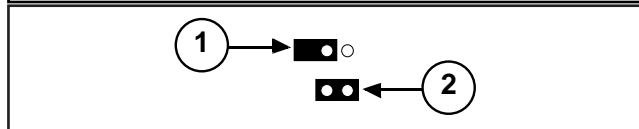
2.3.1 Supervision Feature



Remove the battery before moving the jumpers.

To enable the supervision tracking feature, place its jumper in the ON position, as indicated in Figure 5. Do this by moving the jumper to cover both pins using a small pair of pliers. With supervision tracking enabled, the transmitter sends a silent transmission to the central console approximately every 90 seconds. This enables the central console to monitor the battery and transmitter condition, as well as track the transmitter's location within the protected area.

Figure 5: Jumper Positions



- 1 - Off
- 2 - On

2.3.2 Man-Down and Lanyard Snatch Features

To enable the man-down and lanyard snatch features, place the desired feature jumper in the ON position as shown in Figure 5. Use a small pair of pliers to move the jumper so it covers both pins.

See Section 1.2.2 *Optional Features* for descriptions of these features.

2.3.3 Battery

The transmitter uses a CR2, 3 V lithium battery. The central console indicates when the battery is low and needs replacement.

See Figure 4 for battery polarity. The battery life depends on usage and enabled features.

Notes:

Bosch Security Systems
130 Perinton Parkway
Fairport, NY 14450-9199 USA
www.boschsecurity.us
Customer Service: (800) 289-0096
Technical Support: (888) 886-6189

© 2003 Bosch Security Systems
Subject to change | Printed in the USA
34453D

BOSCH