

# Technical Bulletin

## RPS / RPS-LITE

### version 5.18 (or earlier) update to v6.01 issue



**BOSCH**  
Invented for life

#### Issue severity

- High. Act immediately
- Medium. Bosch Security Systems strongly recommends you take the action described below.
- Low. Advisory

#### Products affected

- ▶ RPS / RPS-LITE v5.18 (or earlier) through v6.01
- ▶ GV4 Control panels, firmware v1.xx / v2.xx
- ▶ B Series Control Panels, firmware v2.xx / v3.xx
- ▶ B9512G Control Panel, firmware v3.00 only
- ▶ B8512G Control Panel, firmware v3.00 only

December 8, 2015

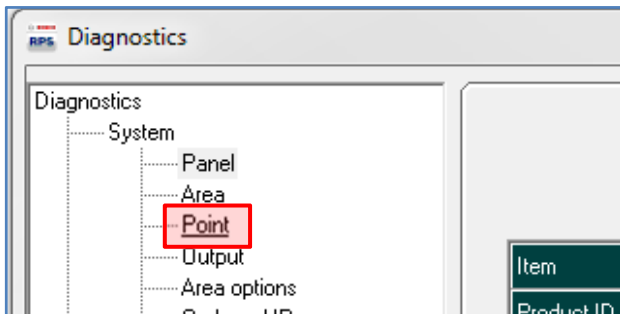
#### Issue 1 – Do not install RPS v6.00 or RPS v6.01

If you are using RPS version 5.18, or earlier, **do not** install RPS v6.00 or RPS v6.01.

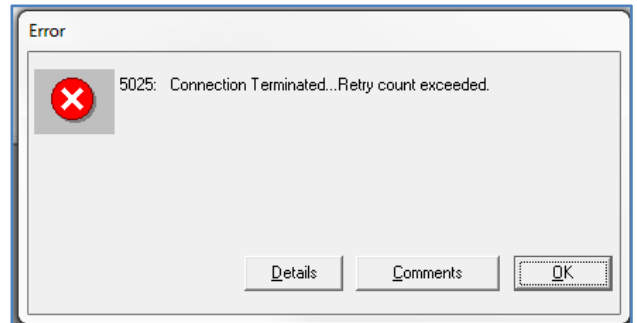
When updating from RPS version 5.18, or earlier, to RPS v6.00 or RPS v6.01, accounts in the RPS database for: GV4 control panels (firmware v1.xx or 2.xx) and B Series control panels (firmware version 2.xx), do not update correctly.

#### Issue 2 – RPS v6.01 diagnostic for points

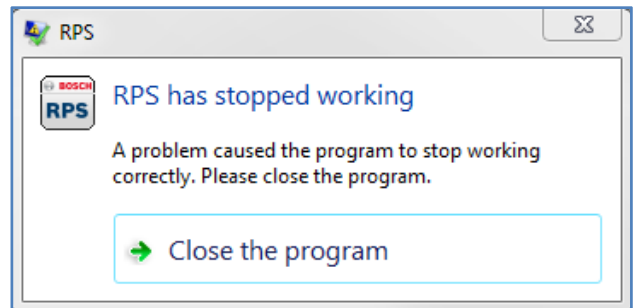
The RPS v6.01 diagnostic for points operation does not work correctly.



If you connect to a B9512G or B8512G control panel (firmware v3.00), enter Diagnostics, and select the Point diagnostic, RPS shows an Error (5025) and disconnects from the control panel.



Clicking OK might resume normal operation, or RPS might stop working.



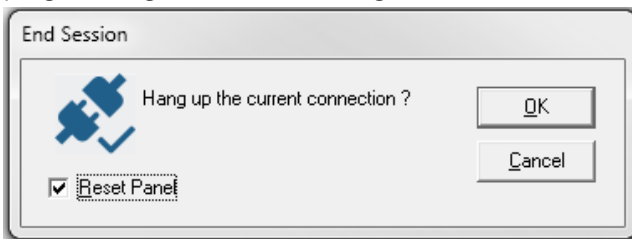
If RPS stops working, click Close the program. Restart RPS to resume normal operation.

This issue only affects the RPS diagnostic for points operation for B9512G and B8512G control panels (firmware v3.00). All other RPS v6.01 functions operate normally.

**Issue 3 – B Series RPS account upgrade function**

The RPS account upgrade function for B Series control panels does not work correctly. When using RPS v6.01 or RPS v6.01 SP1 to upgrade control panel accounts from B Series firmware v2.xx to v3.01 the upgraded account is corrupted.

If you connect to the control panel, send the upgraded account (firmware v3.01) to the panel, and then disconnect with reset checked, the control panel might return to factory default programming after disconnecting.



If you disconnect without selecting Reset Panel, the control panel retains the upgraded account (control panel) configuration.

**Resolution**

RPS v6.01.4 corrects Issues 1, 2, and 3.

**Important!** – if you were using RPS v5.18, or earlier, and upgraded to RPS v6.00 or RPS v6.01 you must install RPS v6.01.4 using the **v5.18 database backup** you created before you upgraded. **Do not** use the RPS v6.00 or v6.01 database.

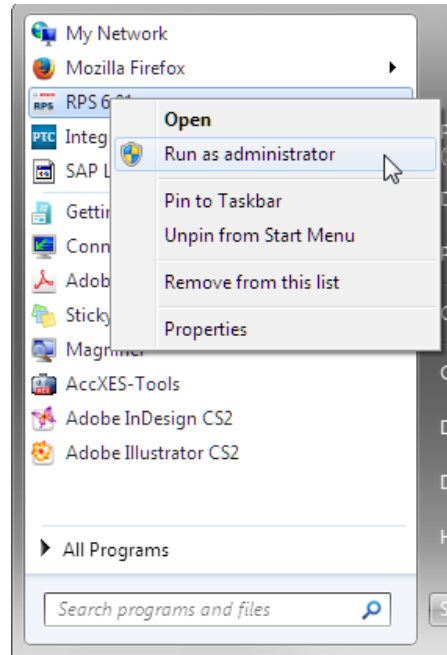
**Important!** – if you were using RPS v5.18, or earlier, and upgraded to RPS v6.00 or RPS v6.01 changes you made to **any** control panel accounts using RPS v6.00 or v6.01 before upgrading to v6.01.4 are lost. You must connect to those control panels and download the changes, or manually reenter them in RPS.

Follow the instructions below to download and install v6.01.4

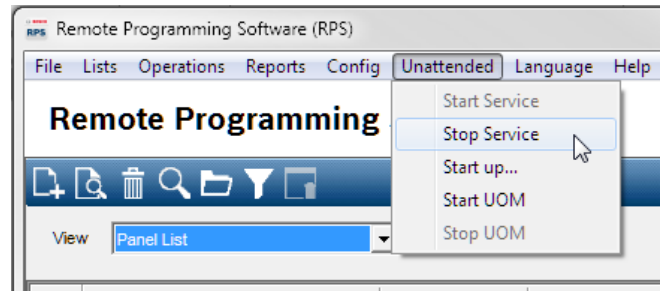
**Stop Unattended Service**

If your RPS installation does not include Unattended mode, skip to **Close RPS**. If your installation does include Unattended mode, you must stop the service (**RPSservice.exe**) before installing v6.01.4

1. Right-click on RPS in your Windows start menu and select Run (open) RPS as administrator.



2. Click on Unattended in the RPS menu bar and select Stop Service.



**Close RPS**

Close RPS before downloading and installing v6.01.4.

**Download RPS v6.01.4**

1. Use the link below to navigate to the Bosch website.  
<http://us.boschsecurity.com/>
2. Under Products, click Intrusion Alarm Systems.
3. Under Intrusion Alarm Systems, click on Software.
4. Under Software, click Programming Software.
5. Click Remote Programming Software Product Page.
6. Click the Software Downloads tab.
7. Click RPS v6.01.4 exe to download.

### Install

After completing the download, verify services are stopped and RPS is closed, then follow the steps below to install RPS v6.01.4

1. Double click **RPS\_v6.01.4.exe** and follow the on-screen instructions to **extract** the installation files.
2. Double-click **RPS\_v6.01.4.exe** and follow the on-screen instructions to **install**.

### Confirm

To confirm that v6.01.4 is installed:

1. Launch and login to RPS.
2. Click Help in the menu bar
3. Click **About Remote Programming Software**.
4. Confirm the version shown is 6.01.4

**Bosch Security Systems, Inc.**  
130 Perinton Parkway  
Fairport, NY 14450 USA  
**[www.boschsecurity.com](http://www.boschsecurity.com)**