

Technical Bulletin

RPS Unattended mode, Simultaneous Connection



BOSCH

Invented for life

Issue severity

- High. Act immediately
- Medium. Bosch Security Systems strongly recommends you take the action described below.
- Low. Advisory

Products affected

- ▶ RPS version 6.00 to 6.04
- ▶ RPS-LITE version 6.00 to 6.04
- ▶ B9512G/B8512G control panels
- ▶ B6512/B5512/B4512/B3512 control panels
- ▶ D9412GV4/D7412GV4/D7212GV4 control panels
- ▶ D9412GV3/D7412GV3/D7212GV3 control panels
- ▶ D9412GV2/D7412GV2/D7212GV2 control panels
- ▶ D9412G/D7412G/D7212G control panels
- ▶ D9412/D7412/D7212 control panels
- ▶ D9112 control panels

July 5, 2017

Issue

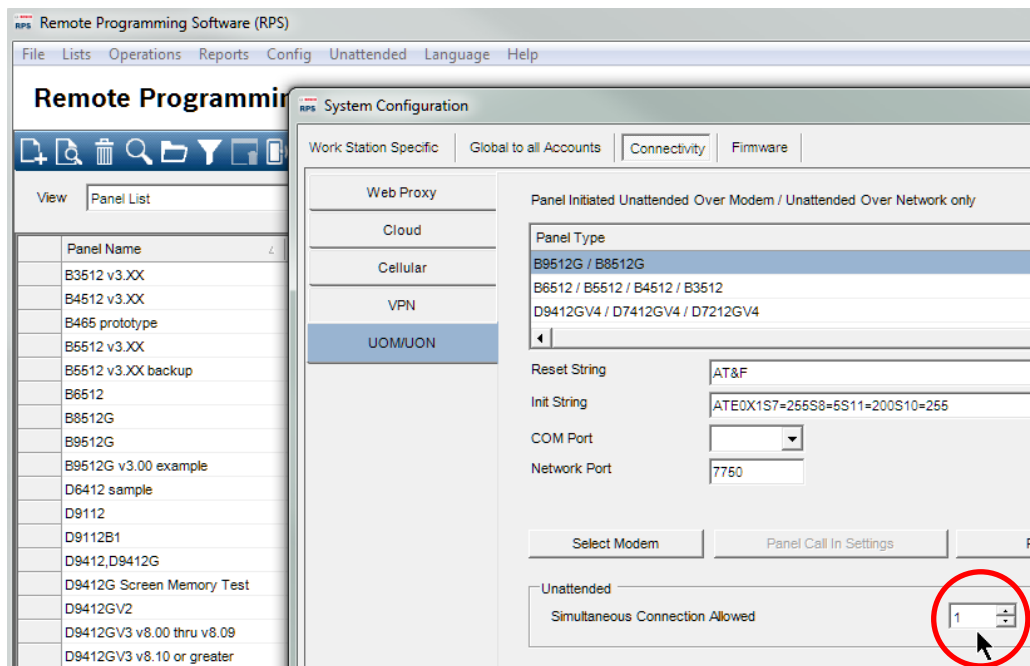
When you configure an RPS or RPS-LITE workstation to allow more than one simultaneous connection for Unattended mode, and control panels use the same Time Window (or overlapping Time Windows) for Unattended updates, RPS could send the configuration of one control panel to a different control panel.

Resolution

This issue will be resolved in version 6.05 of RPS and RPS-LITE.

Workaround

To avoid the issue, configure RPS Unattended mode for 1 connection at a time. Refer to figure below.



Config > System > Connectivity > UOM/UON > Unattended > Simultaneous Connection Allowed > 1

