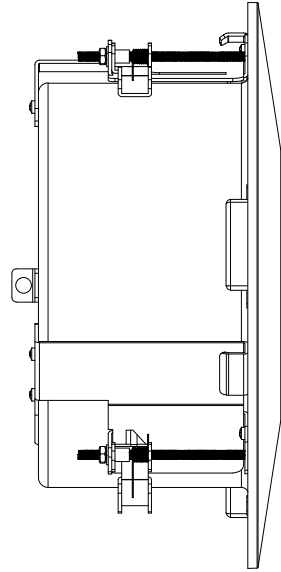
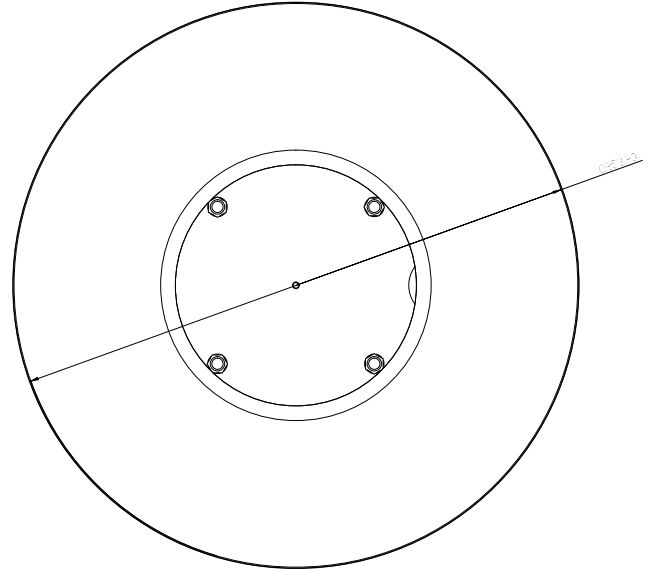
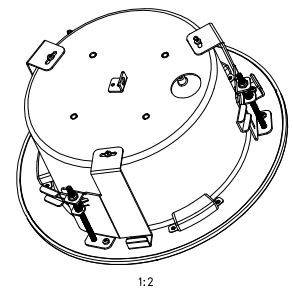
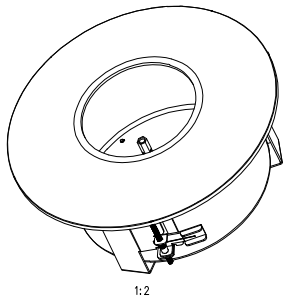
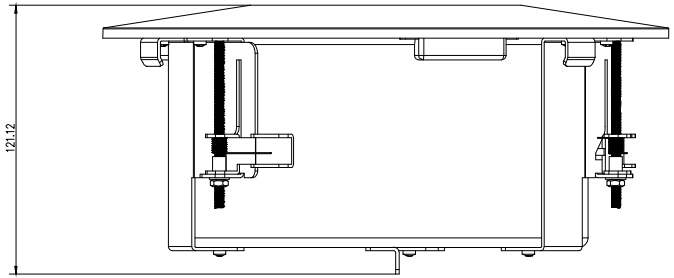


Always follow safety instructions when working with this product. Read the instructions carefully before use. Do not use the product if it is damaged or if the instructions are not followed. The manufacturer is not responsible for any damage or injury caused by the use of this product.

Always follow safety instructions when working with this product. Read the instructions carefully before use. Do not use the product if it is damaged or if the instructions are not followed. The manufacturer is not responsible for any damage or injury caused by the use of this product.

Specification of Accessory Screws									
Item	Part name	Number	Metric	Pitch	Head type	Head Diameter	Drive type	Material	Finish
1	M6 Screw	4	M6	1.0mm	Pan Head	12.0mm	Torx T25	Low C steel	Ni Plating
- All screws have been done heat treatment for enhancing strength.									



Part Name	Plenum-rated in-ceiling mount kit	Part No.	F.01U.324.936
Qty	1	Unit	Kit
Material	Low C steel	Finish	Ni Plating
Weight	0.5 kg	Volume	0.001 m³
Dimensions	100 mm x 100 mm x 121.12 mm	Weight	0.5 kg
Material	Low C steel	Finish	Ni Plating
Weight	0.5 kg	Volume	0.001 m³
Dimensions	100 mm x 100 mm x 121.12 mm	Weight	0.5 kg
Material	Low C steel	Finish	Ni Plating
Weight	0.5 kg	Volume	0.001 m³
Dimensions	100 mm x 100 mm x 121.12 mm	Weight	0.5 kg