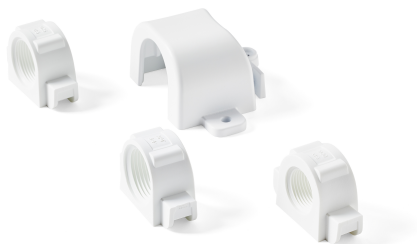


NDA-3082-CND 3000i outdoor conduit adapter, 8pcs



- ▶ Enables M20, M25, and NPT3/4" conduit installation
- ▶ Compatible with FLEXIDOME IP 3000i IR outdoor cameras

The conduit adapter set enables M20, M25, and NPT3/4" conduit installation of a camera. The conduit adapter set is compatible with the FLEXIDOME IP 3000i IR outdoor cameras:

- NDE-3512-AL
- NDE-3513-AL

The conduit adapter set can directly be placed into the designated area in the camera base that is supplied with the camera. The package contains eight pieces to support the conduit installation of eight cameras.

Parts included

Quantity	Component
8	Conduit adapter set, including T4x30mm screw and anchor

Technical specifications

Mechanical

Dimensions (H x W x D) (mm) per piece	94 mm x 61 mm x 39.7 mm
Dimensions (H x W x D) (in) per piece	3.7 in x 2.4 in x 15.63 in
Weight (g) per piece	159 g

Represented by:

Europe, Middle East, Africa:
Bosch Security Systems B.V.
P.O. Box 80002
5600 JB Eindhoven, The Netherlands
Phone: + 31 40 2577 284
www.boschsecurity.com/xc/en/contact/
www.boschsecurity.com

Germany:
Bosch Sicherheitssysteme GmbH
Robert-Bosch-Ring 5
85630 Grasbrunn
Tel.: +49 (0)89 6290 0
Fax: +49 (0)89 6290 1020
de.securitysystems@bosch.com
www.boschsecurity.com

North America:
Bosch Security Systems, LLC
130 Perinton Parkway
Fairport, New York, 14450, USA
Phone: +1 800 289 0096
Fax: +1 585 223 9180
onlinehelp@us.bosch.com
www.boschsecurity.com

Asia-Pacific:
Robert Bosch (SEA) Pte Ltd, Security Systems
11 Bishan Street 21
Singapore 573943
Phone: +65 6571 2808
Fax: +65 6571 2699
www.boschsecurity.com/xc/en/contact/
www.boschsecurity.com

Weight (lb) per piece	0.13 lb
Color in RAL	RAL 9003 Signal white
Material	Conduit adapter: metal; conduit thread: plastic
Conduit	M20, M25, and NPT3/4" conduit side entry

Ordering information

NDA-3082-CND 3000i outdoor conduit adapter, 8pcs
Conduit adapter set for FLEXIDOME IP 3000i IR outdoor cameras, 8 pieces
Order number **NDA-3082-CND | F.01U.416.435**