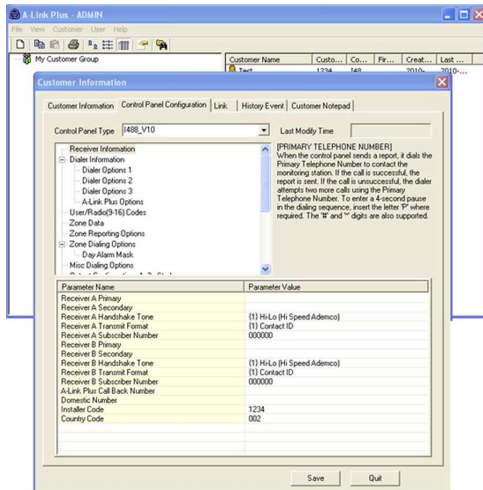


## ITS-ALINK-PLUS WINDOWS BASE A-Link Plus



ITS-ALINK-PLUS software is the remote programming software for compatible control panels. It provides a flexible and user-friendly interface between a PC and control panels. With this software, the control panels can be programmed remotely through a modem, or directly from the PC using the Direct Link cable. Use this software to manage customer information, program customer control panels, and remotely connect to, and operate, control panels. It is easy to upload and download programming information between the control panel and the PC, obtain a visual representation of current system status, arm or disarm the system, operate various programmable outputs, and obtain reports of control panel data and journal logs. The transfer tool transfers data from older versions of A-LINK software to the ITS-ALINK-PLUS software.

### Functions

#### Remote Operation

Once a valid connection is established between the PC and control panel, operators with appropriate security levels can:

- arm or disarm the system
- turn sirens on or off
- turn various programmable outputs on or off

#### Report Capability

The last 40 events in the control panel can be displayed and printed for a hardcopy record.

#### Three Programmable Security Levels

The system administrator (Administrator Level) can enable or disable certain ITS-ALINK-PLUS software functions for each operator by assigning a required

- ▶ View and update compatible control panel data
- ▶ Send and receive programming data between the A-Link Plus computer and the control panel
- ▶ Remotely arm or disarm the control panel and outputs control
- ▶ View control panel event history
- ▶ Multi-lingual user interface

security level to each function and a security level to each operator. Operators can only perform functions for which they have a valid security level.

The available security levels are:

- **Administrator Level:** allows full access to all system configurations
- **Operator Level:** allows full access to all system configurations except print and user settings
- **Registrar Level:** allows entry of customer information only

### Installation/configuration notes

#### Compatibility Information

The ITS-ALINK-PLUS software supports the following control panels:

- ICP-CMS6-CHI v1.0 (and higher)
- ICP-CMS8-CHI v1.0 (and higher)
- ICP-CMS40-CHI v1.0
- ICP-AMAX-P-EN
- ICP-AMAX-PCB-EN
- ICP-AMAX-P
- ICP-CC404 v1.x
- ICP-CC408 v1.x
- ICP-CC488 v1.x
- Solution 16 (CC880 and SC8016) v2.x and later
- Solution 16 (CC880)(Solution 16 v1.4)
- Solution 844 (CC404 v1.x and CC404 v2.x)
- Solution 862 (CC406 v1.x)
- Solution 880 (CC408 v1.x and CC408 v2.x)
- Solution Ultima 844 (CC484 v1.x)
- Solution Ultima 862 (CC486 v1.x)
- Solution Ultima 880 (CC488 v1.x and CC488 v2.x)

- Solution 2000
- Solution 3000
- 5500 series
- 8500 series

### Parts included

Quantity	Component
3	User guide

### Technical specifications

#### System requirements

Operating system	Windows 10 (32 bit); Windows 10 (64 bit)
Processor type	Intel Pentium III
Processor speed	1.5 GHz or faster
Free space (MB)	512 MB
Memory (RAM) (MB)	256 MB

### Ordering information

**ITS-ALINK-PLUS WINDOWS BASE A-Link Plus**  
Windows-based remote programming software for  
compatible control panels  
Order number **ITS-ALINK-PLUS | F.01U.164.995**

#### Represented by:

**Europe, Middle East, Africa:**  
Bosch Security Systems B.V.  
P.O. Box 80002  
5600 JB Eindhoven, The Netherlands  
Phone: + 31 40 2577 284  
[www.boschsecurity.com/xc/en/contact/](http://www.boschsecurity.com/xc/en/contact/)  
[www.boschsecurity.com](http://www.boschsecurity.com)

**Germany:**  
Bosch Sicherheitssysteme GmbH  
Robert-Bosch-Ring 5  
85630 Grasbrunn  
Tel.: +49 (0)89 6290 0  
Fax: +49 (0)89 6290 1020  
[de.securitysystems@bosch.com](mailto:de.securitysystems@bosch.com)  
[www.boschsecurity.com](http://www.boschsecurity.com)

**North America:**  
Bosch Security Systems, LLC  
130 Perinton Parkway  
Fairport, New York, 14450, USA  
Phone: +1 800 289 0096  
Fax: +1 585 223 9180  
[onlinehelp@us.bosch.com](mailto:onlinehelp@us.bosch.com)  
[www.boschsecurity.com](http://www.boschsecurity.com)

**Asia-Pacific:**  
Robert Bosch (SEA) Pte Ltd, Security Systems  
11 Bishan Street 21  
Singapore 573943  
Phone: +65 6571 2808  
Fax: +65 6571 2699  
[www.boschsecurity.com/xc/en/contact/](http://www.boschsecurity.com/xc/en/contact/)  
[www.boschsecurity.com](http://www.boschsecurity.com)