



BOSCH

DSA E-Series E2800 - Adding expansion units

en

Installaton manual

1 Short information

This manual describes how to add NetApp E2800 expansion units to a running NetApp E2800 system without any data loss.

The description is valid for the following products:

- E2800 12-bay
 - DSA-N2E8X4-12AT
 - DSX-N1D8X4-12AT
 - DSA-N2C8X4-12AT
 - DSA-N2E8X8-12AT
 - DSX-N1D8X8-12AT
 - DSA-N2C8X8-12AT
 - DSA-N2E8XC-12AT
 - DSX-N1D8XC-12AT
 - DSA-N2C8XC-12AT
 - DSA-N2E8XG-12AT
 - DSX-N1D8XG-12AT
 - DSA-N2C8XG-12AT
- E2800 60-bay
 - DSA-N6C8X4-60AT
 - DSA-N6C8X8-60AT
 - DSA-N6C8XC-60AT
 - DSX-N6D8X4-60AT
 - DSX-N6D8X8-60AT
 - DSX-N6D8XC-60AT
 - DSX-NRCK40-INT8

2 Adding expansion units



Notice!

The following description refers to a duplex controller configuration. For a single controller configuration, the procedure is analogous.

To attach an expansion unit:

1. In the web browser, enter the management IP address of the E2800 controller.
A dialog box appears to sign in to the SANtricity program.

2. Enter your credentials.

The **SANtricity System Manager** window appears.

3. Click **Hardware**.

The **HARDWARE** pane of the Controller Shelf appears showing the attached expansion units.

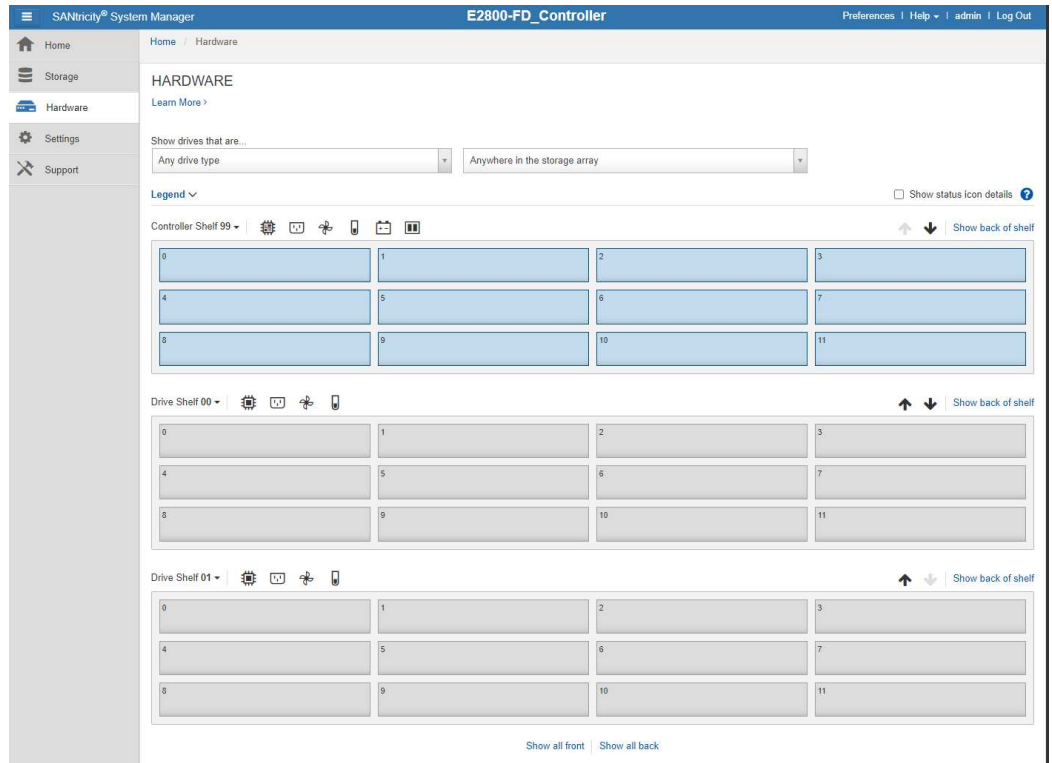
Note: The example shows a Controller Shelf with no expansion units connected.

4. Click **Storage**.

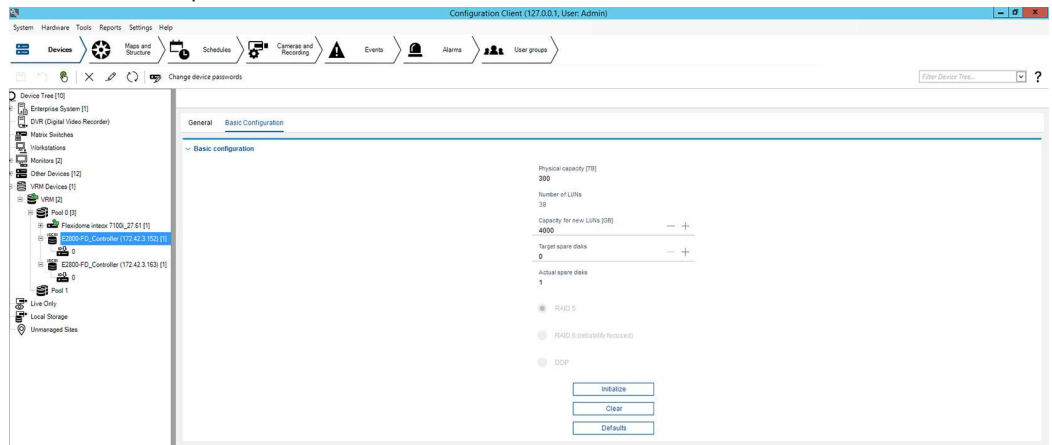
The **VOLUMES** pane appears showing the LUNs assigned in the VRM system.

Name	Status	Assigned To	LUN	Pool/ Volume Group	Volume Block Size	RAID Level	Allocated Capacity (GiB)	Maximum Configured Capacity (GiB)	Edit
LUN_VRM23	Optimal	Default Cluster	23	Volume Group VOL_VRM0	512n	5	4000.00	N/A	
LUN_VRM24	Optimal	Default Cluster	24	Volume Group VOL_VRM0	512n	5	4000.00	N/A	
LUN_VRM25	Optimal	Default Cluster	25	Volume Group VOL_VRM0	512n	5	4000.00	N/A	
LUN_VRM26	Optimal	Default Cluster	26	Volume Group VOL_VRM0	512n	5	4000.00	N/A	
LUN_VRM27	Optimal	Default Cluster	27	Volume Group VOL_VRM0	512n	5	4000.00	N/A	
LUN_VRM28	Optimal	Default Cluster	28	Volume Group VOL_VRM0	512n	5	4000.00	N/A	
LUN_VRM29	Optimal	Default Cluster	29	Volume Group VOL_VRM0	512n	5	4000.00	N/A	
LUN_VRM30	Optimal	Default Cluster	30	Volume Group VOL_VRM0	512n	5	4000.00	N/A	
LUN_VRM31	Optimal	Default Cluster	31	Volume Group VOL_VRM0	512n	5	4000.00	N/A	
LUN_VRM32	Optimal	Default Cluster	32	Volume Group VOL_VRM0	512n	5	4000.00	N/A	
LUN_VRM33	Optimal	Default Cluster	33	Volume Group VOL_VRM0	512n	5	4000.00	N/A	
LUN_VRM34	Optimal	Default Cluster	34	Volume Group VOL_VRM0	512n	5	4000.00	N/A	
LUN_VRM35	Optimal	Default Cluster	35	Volume Group VOL_VRM0	512n	5	4000.00	N/A	
LUN_VRM36	Optimal	Default Cluster	36	Volume Group VOL_VRM0	512n	5	4000.00	N/A	
LUN_VRM37	Optimal	Default Cluster	37	Volume Group VOL_VRM0	512n	5	4000.00	N/A	
LUN_VRM38	Optimal	Default Cluster	38	Volume Group VOL_VRM0	512n	5	4000.00	N/A	
LUN_VRM39	Optimal	Default Cluster	39	Volume Group VOL_VRM0	512n	5	4000.00	N/A	
LUN_VRM40	Optimal	Default Cluster	40	Volume Group VOL_VRM0	512n	5	291.72	N/A	
LUN_VRM41	Optimal	Default Cluster	41	Volume Group VOL_VRM0	512n	5	291.72	N/A	

5. Connect the expansion units to the Controller Shelf.
6. In the **SANtricity System Manager** window, click **Hardware**.
The **HARDWARE** pane appears showing the expansion units you have connected.
Note: The example shows the Controller Shelf with 2 expansion units (Drive Shelf 00 and Drive Shelf 01).

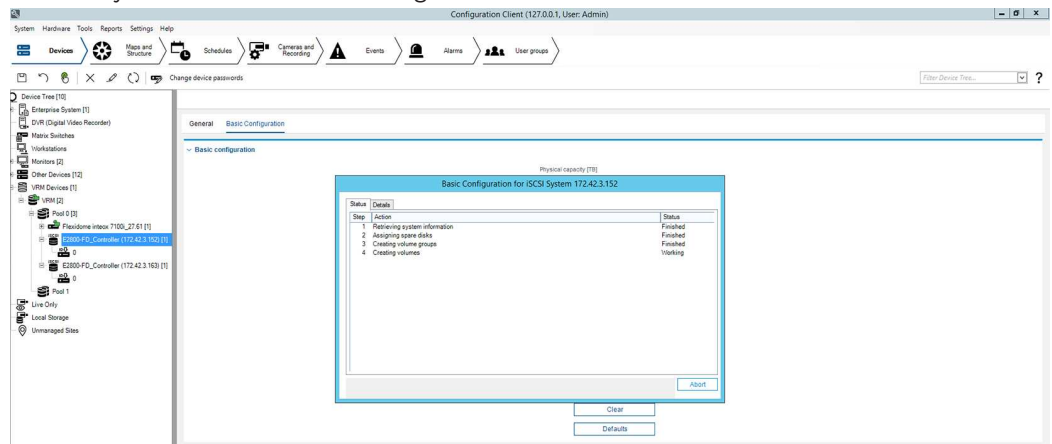


7. Open the BVMS Configuration Client program.
8. In the **Device Tree** structure:
Click **VRM Devices > VRM > Pool x > E2800 Controller**.
Click the **Basic Configuration** tab, then click **Initialize**.
The **Basic Configuration for iSCSI System** dialog box appears.
Note: The example shows Controller A selected.

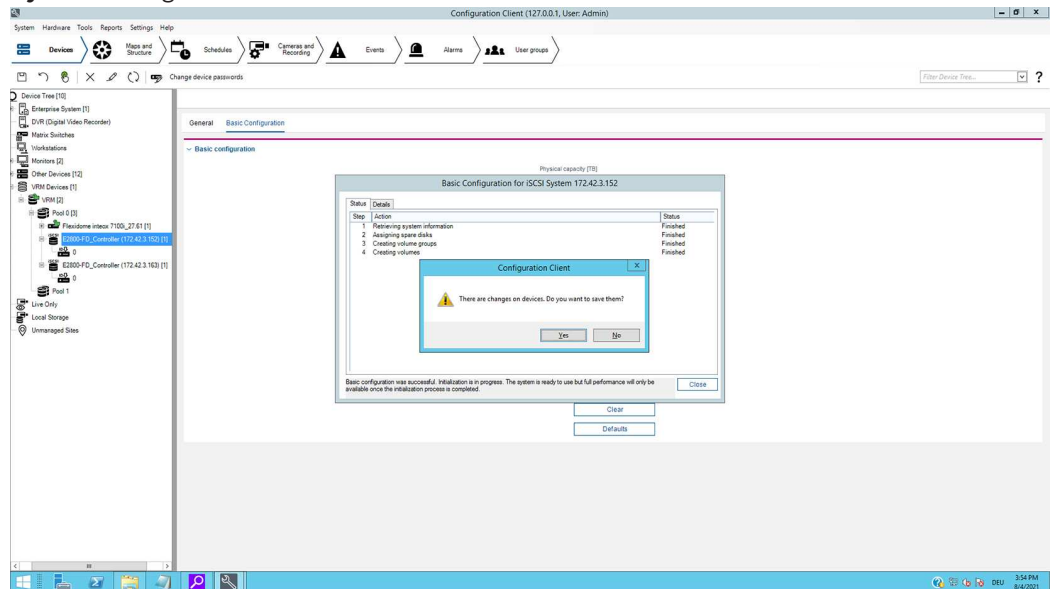


9. In the **Basic Configuration for iSCSI System** dialog box, select the **Status** tab.
Make sure that in the **Action** column the **Creating volumes** status changes from **Working** to **Finished**.

Note: As soon as the status has changed to **Finished**, a notification appears, asking whether you want to save the changes.

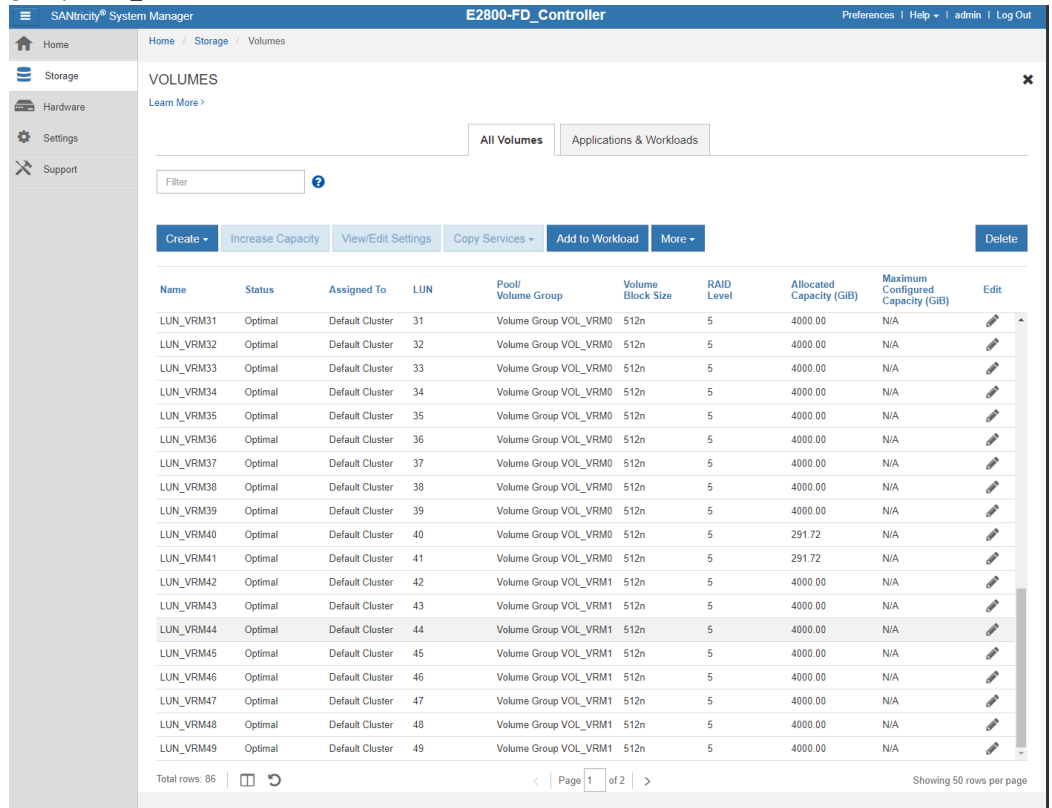


10. Click **Yes** to save the changes, then click **Close** to close the **Basic Configuration for iSCSI System** dialog box.

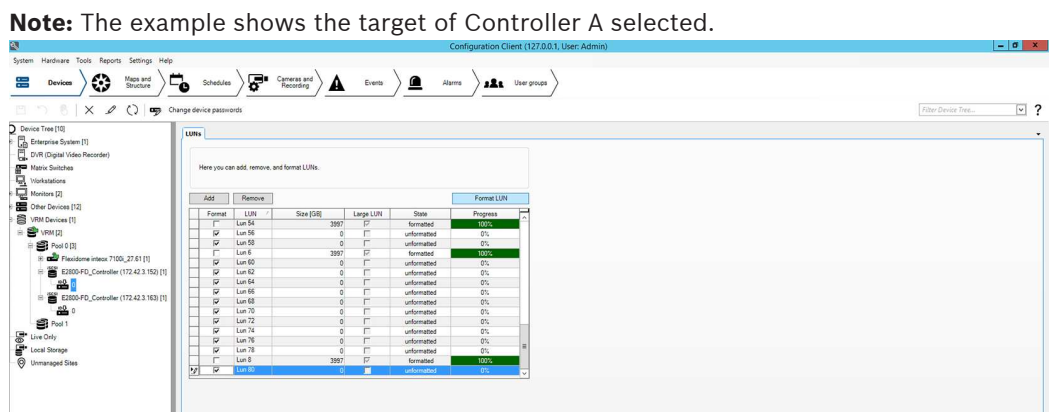


11. In the Configuration Client program, click the **Save** icon.

- In the SANtricity System Manager window, click **Storage**.
The **VOLUME** pane appears showing the new LUNs added to new volume groups.
Note: The example shows the new LUNs (LUN_VRM 42 - LUN_VRM 49) in the new volume group VOL_VRM1.



- In the **Device Tree** structure of the Configuration Client program, click the E2800 target.
The LUN overview appears.



- In the **Format** column, select the check boxes of all unformatted LUNs, then click **Format LUN**.
- Make sure all LUNs have the status **formatted**.
- Format Controller B in the same way.



Bosch Security Systems B.V.

Torenallee 49

5617 BA Eindhoven

Netherlands

www.boschsecurity.com

© Bosch Security Systems B.V., 2021