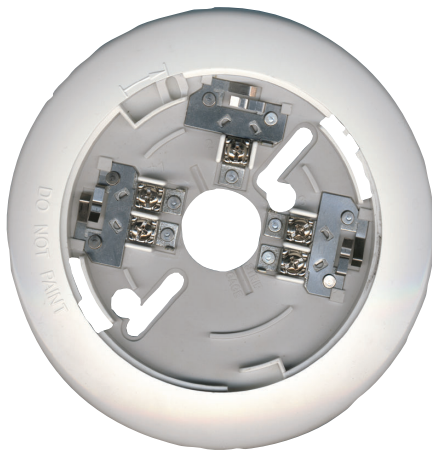


# D7050-B6 Multiplex base, 2-wire

www.boschsecurity.com



**BOSCH**  
Invented for life



- ▶ Connects to multiplex bus of FPD-7024 or D7024 addressable FACPs, DS7400Xi Control Panel for the US, and G Series Panels
- ▶ Detector's head is easily removed by twisting
- ▶ Two-piece detector system head and base design allows pre-wiring the system

The D7050-B6 is the required base for the D7050 MUX smoke heads and D7050TH MUX smoke heads with fixed heat (135°F). It connects to the multiplex bus of the compatible FACP or combination Burglary/Fire control panel (see Planning).



**Notice**

The FPD-7024 and D7024 require an FPE-7039 or D7039\* MUX expansion module to connect to this base. Additionally, the D7024\* FACP must be ROM version 2.0 or higher. The DS7400Xi\* control panel requires a DS7430 Multiplex Expansion Module to connect to this base. The G Series control panels require a D8125MUX Multiplex Interface Module to connect to this base.

\* indicates legacy product

**Certifications and approvals**

Region	Regulatory compliance/quality marks	
USA	UL	UL 268, Smoke Detectors for Fire Alarm Systems
	FM	D7050-B6

Region	Regulatory compliance/quality marks	
	CSFM	see www.boschsecurity.com (the Bosch website)
	FDNY-CoA	6173

**Installation/configuration notes**

**Compatible Panels**

The D7050-B6 is compatible with the FPD-7024 and D7024\* Fire alarm control panels, the DS7400Xi\* Control panel for the US, and the G Series panels (B9512G, B8512G, D9412GV4, D7412GV4, D7212GV41 D9412GV3, D7412GV3, D7212GV31 D9412GV2\*, D7412GV2\*, D7212GV2\*1 D9412G\*, D7412G\*, and D7212G\*<sup>1</sup>)

\* Legacy product - not available for purchase. The D7024 FACPs and DS7400Xi panel are listed to UL864, 8th edition. The G series legacy products are listed to UL864, 9th edition.

<sup>1</sup> The D7212G models are not UL Listed for commercial fire.

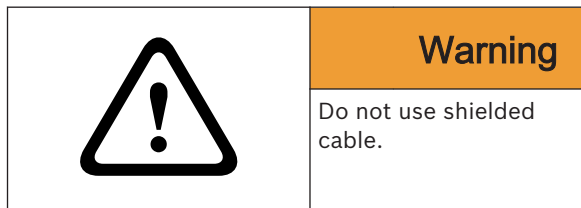
### Mounting Considerations

The base can be mounted on a four-inch square, a four-inch octagonal, or a single-gang box. It can also be surface mounted with anchors, mollies, or wing nuts.

### Number of Devices Allowed

The number of multiplex devices allowed on the multiplex bus is determined by wire gauge and total bus wire length. Do not exceed 50  $\Omega$  maximum line resistance. For multiplex bus wiring requirements, see the *Installation Manual* for the pertinent MUX expansion/interface module.

### Wiring Connections



The D7050-B6 bases can be wired in series or using the T-tap method. For wiring details, see the *D7050-B6 Installation Manual*.

### Parts included

Quantity	Component
1	Detector base
1	Hardware pack
1	Literature pack

### Technical specifications

#### Environmental

Relative Humidity:	0% to 93% non-condensing
Temperature (Operating):	+32°F to +100°F (0°C to +38°C)

#### Mechanical

Color:	Off-white
Material:	High-impact, fire-retardant polymer plastic

Dimensions (diameter x H) product package	5.67 in. (0.144 m) x 1.02 in. (0.026 m)
Packaged weight	
Gross	3.53 oz. (0.100 kg)
Net	2.93 oz. (0.083 kg)

### Ordering information

#### D7050-B6 Multiplex base, 2-wire

Required base for the D7050 and D7050TH MUX smoke heads  
Order number **D7050-B6**

#### Accessories

##### D7050 Multiplex smoke head

The symmetry of the D7050's optical chamber allows 360° uniform smoke entry, but minimizes external light entry. Within the chamber, large smoke particles scatter infrared light which is detected by a gated, high-speed, photodiode sensor.

Order number **D7050**

##### D7050TH Multiplex detector head, fixed heat

The D7050TH has an optical smoke chamber and a 35°F (57°C) fixed-temperature sensor. Use it in confined areas where a fire increases air temperature slowly but substantially before the fire breaks confinement.

Order number **D7050TH**

##### DRA-12/24 Remote indicator plate, 12/24V

Designed to provide remote annunciation of alarms when connected to the D7050-B6 MUX base, 2-wire  
Order number **DRA-12/24**

##### DB125MUX Expansion module, Multiplex

Controls two independent buses.  
Order number **DB125MUX**

#### Represented by:

**Europe, Middle East, Africa:**  
Bosch Security Systems B.V.  
P.O. Box 80002  
5600 JB Eindhoven, The Netherlands  
Phone: + 31 40 2577 284  
emea.securitysystems@bosch.com  
emea.boschsecurity.com

**Germany:**  
Bosch Sicherheitssysteme GmbH  
Robert-Bosch-Ring 5  
85630 Grasbrunn  
Germany  
www.boschsecurity.com

**North America:**  
Bosch Security Systems, Inc.  
130 Perinton Parkway  
Fairport, New York, 14450, USA  
Phone: +1 800 289 0096  
Fax: +1 585 223 9180  
onlinehelp@us.bosch.com  
www.boschsecurity.us

**Asia-Pacific:**  
Robert Bosch (SEA) Pte Ltd, Security Systems  
11 Bishan Street 21  
Singapore 573943  
Phone: +65 6571 2808  
Fax: +65 6571 2699  
apr.securitysystems@bosch.com  
www.boschsecurity.asia