

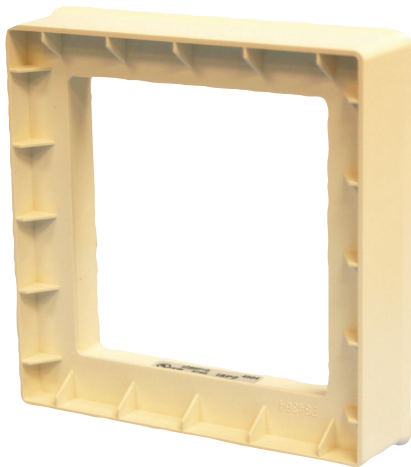
# ISP2-W Surface Adapter (white)

www.boschsecurity.com



**BOSCH**

Invented for life



A white adaptor plate that mounts to four-inch square back boxes in surface-mount and semi-flush applications. Measures 13.3 cm (5.25 in.) square by 3 cm (1.1875 in.) deep.

## Certifications and approvals

Region	Certification
USA	UL UCST: Audible Signal Appliances, General Signal (UL464), ULSZ: Audible Signal Appliances (UL464)

## Parts included

Quantity	Component
1	Surface adapter
1	Hardware pack
1	Literature – Installation manual

## Ordering information

### ISP2-W Surface Adapter (white)

13.3 cm (5.25 in.) square, 3 cm (1.1875 in.) deep

Order number **ISP2-W**