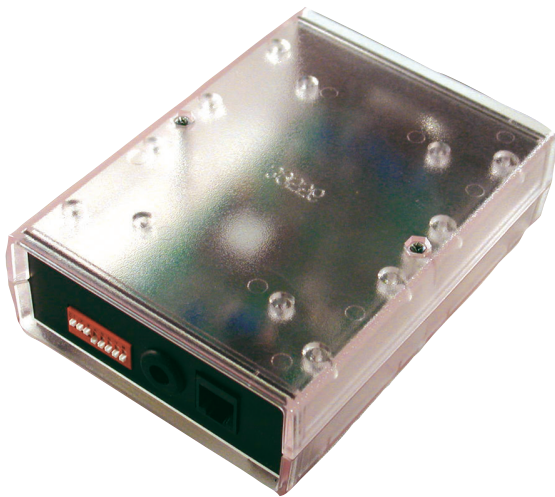


DX4010i RS-232 Serial Interface Module

www.boschsecurity.com



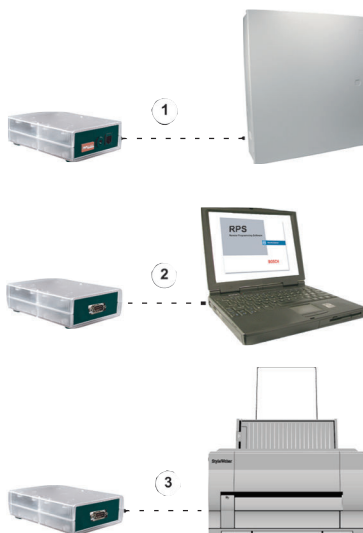
BOSCH
Invented for life



- ▶ Transparent enclosure
- ▶ Diagnostic light emitting diodes (LEDs)
- ▶ RJ-16 data bus connector
- ▶ DIP switches for address and bus programming
- ▶ Enhanced direct connection for Remote Programming Software (RPS)

The DX4010i RS-232 Serial Interface Module creates a local connection between compatible control panels and approved applications or other RS-232 devices. The module connects to the control panel's data bus which provides power and data.

System overview



The DX4010i RS-232 Serial Interface Module connects to:

1. A control panel's option or serial device interface (SDI) bus through the data bus connector.
2. A PC for RPS, BIS, or other third party applications through the RS-232 connector.
3. A serial printer or parallel printer with a converter cable box (not shown) through the RS-232 connector with a compatible control panel. Refer to *Compatibility Information* for details.

Functions

DIP Switches

Use the external DIP switches to easily assign an address to the DX4010i RS-232 Serial Interface Module.

RJ-16 Data Bus Connector and DB9 DTE RS-232 Connector

Use the RJ-16 data bus connector for a remote programming connection. Use the DB9 DTE RS-232 connector to connect to approved RS-232 devices.

Transparent enclosure

The diagnostic LEDs show through the transparent enclosure, making troubleshooting easy and convenient.

Diagnostic LEDs

There are four diagnostic LEDs that provide information about the transmission and receipt of data.

Two Red LEDs

	Function
BUS RX	Data bus receives data from control panel
BUS TX	Data bus transmits data to control panel

Two Green LEDs

	Function
SER RX	RS-232 receives data from serial device
SER TX	RS-232 transmits data to serial device

Certifications and approvals

Australia C-Tick

Region	Certification
Europe	CE 89/336/EEC, EN55022: 1994 +A1: 1995 +A2: 1997 Class A, EN50130-4: 1995 +A1: 1998 +A2: 2003, EN60950-1: 2001, EN61000-3-2: 2000, EN61000-3-3: 1995 +A1: 2001
Belgium	INCERT B-509-0005

Installation/configuration notes**Compatibility Information****Applications and RS-232 Devices**

United States	RPS:	Supported on all compatible control panels.
	PC9000:	Supported on all the following control panels: D9412G, D7412G, D7212G, D9112, D7412, and D7212.
	Building Integration Software (BIS):	Supported on the following SDI bus control panels (version 6.3 and higher): D9412G, D7412G, and D7212G.
China	CMS 7000:	Supported on DS7400Xi Control Panels (option bus) set at Mode 18 (version 3.09 or higher).
All	Printers:	Supported on option bus control panels.

SDI Bus Control Panels (version 6.0 or higher)

United States	<ul style="list-style-type: none"> D7212G, D7412G, and D9412G D7212, D7412, and D9412 D9112
---------------	--

Option Bus Control Panels

Europe	<ul style="list-style-type: none"> DS7400Xi (version 2.02 or higher) DS7220 and DS7240
--------	--

Australia	<ul style="list-style-type: none"> CC7420-A
United States	<ul style="list-style-type: none"> D4412 and D6412

The DX4010i RS-232 Serial Interface Module replaces the following modules:

United States	D9133 Serial Interface Module	For use with BIS, PC9000, or other third party applications on SDI bus control panels.
	D9133DC Serial Interface Module	For use with RPS or other third party applications on SDI bus control panels.
	D9533 RS-232 Serial Interface Module	For use with RPS, CMS 7000*, or printers on option bus control panels
Europe, United States, and China	DX4010 RS-232 Serial Interface Module	For use with RPS, CMS 7000*, or printers on option bus control panels.

*CMS 7000 is available in China only.

Technical specifications**Environmental Considerations**

Operating Temperature:	0°C to +50°C (+32°F to +122°F)
Relative Humidity:	5% to 85% at +30°C (+86°F) non-condensing

Power Requirements

Current (Maximum):	50 mA nominal, 55 mA with LED
Voltage (Operating):	8 VDC to 14 VDC

Ordering information**DX4010i RS-232 Serial Interface Module**

Locally connects compatible control panels and approved applications or other RS-232 devices. Order number **DX4010i**

Represented by:

Americas:

Bosch Security Systems, Inc.
130 Perinton Parkway
Fairport, New York, 14450, USA
Phone: +1 800 289 0096
Fax: +1 585 223 9180
security.sales@us.bosch.com
www.boschsecurity.us

Europe, Middle East, Africa:

Bosch Security Systems B.V.
P.O. Box 80002
5617 BA Eindhoven, The Netherlands
Phone: + 31 40 2577 284
Fax: +31 40 2577 330
emea.securitysystems@bosch.com
www.boschsecurity.com

Asia-Pacific:

Robert Bosch (SEA) Pte Ltd, Security
Systems
11 Bishan Street 21
Singapore 573943
Phone: +65 6571 2808
Fax: +65 6571 2699
apr.securitysystems@bosch.com
www.boschsecurity.asia

China:

Bosch (Shanghai) Security Systems Ltd.
201 Building, No. 333 Fuquan Road
North IBP
Changning District, Shanghai
200335 China
Phone +86 21 22181111
Fax: +86 21 22182398
www.boschsecurity.com.cn

America Latina:

Robert Bosch Ltda Security Systems Division
Via Anhanguera, Km 98
CEP 13065-900
Campinas, Sao Paulo, Brazil
Phone: +55 19 2103 2860
Fax: +55 19 2103 2862
latam.boschsecurity@bosch.com
www.boschsecurity.com