

Easy Series Intrusion Control Panel

www.boschsecurity.com



BOSCH
Invented for life

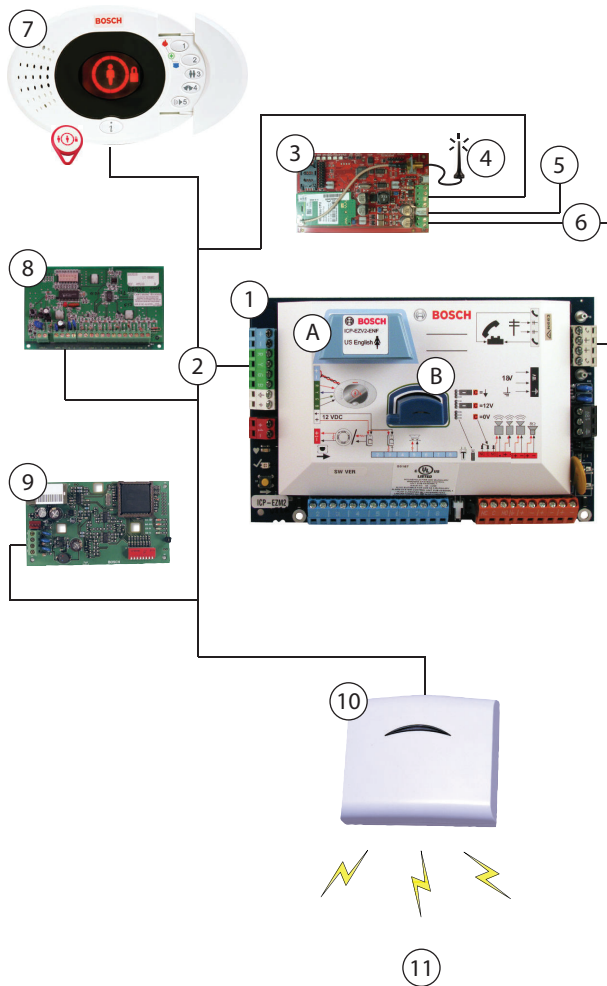


- ▶ 32 total input points (hard-wired, wireless, or a combination)
- ▶ Simple icon-based control center
- ▶ Integrated proximity reader
- ▶ Choice of spoken languages
- ▶ Advanced false alarm reduction

The Easy Series Intrusion Control Panel is designed for residential and small commercial applications. The Control Center speaks while showing animated icons, so that the user quickly understands the information and tasks.

The Easy Series Intrusion Control Panel supports Wireless Local Security Network (wLSN), providing two-way wireless communication, easy installation, automatic configuration, and a variety of wireless devices.

System overview



1. Easy Series Intrusion Control Panel with Voice Module (A) and Programming Key (B) Installed.
2. System Data Bus
3. ITS-DX4020G Integrated Communicator
4. Antenna for Connection to Wireless Carrier's Network
5. USB Connection to Local Host for Management
6. Audio Connection to Control Panel
7. Easy Series Control Center
8. DX-2010 Input Expander Module
9. DX4020 Ethernet Network Interface Module
10. Wireless Local Security Network (wLSN) Hub
11. Optional wLSN Devices

Functions

Advanced False Alarm Reduction

The Easy Series Intrusion Control Panel system guards against user-generated false alarms through design features such as Graduated Annunciation and

Intelligent Threat Assessment. Easy Series uses enhanced false alarm verification methods that exceed industry false alarm reduction standards.

Alarm Verification

The following alarm verification methods reduce false alarms without compromising usability or reliability.

1. Two-way Audio Alarm Verification: Provides remote customers the ability to listen to and speak with users at the protected premises.
2. Sequential Verification: When two or more input sensors activate within a specified time period, an intrusion alarm is considered verified. For example, if a door sensor and a motion detector both sense alarms, the system sends a verified alarm report.
3. Intelligent Threat Assessment: The Easy Series Intrusion Control Panel uses protection levels, input types, input conditions, and system event timing to assess a potential threat. If the threat reaches a specific threshold, the system sends a verified alarm report.

Versatile Network Communications

The Easy Series Intrusion Control Panel provides two-way network communications between the control panel and a central monitoring station. For hard-wired Ethernet networks, you can install the DX4020 Ethernet Network Interface Module. For wireless networks, you can install the ITS- DX4020-G Communicator, which supports Short Message Service (SMS) via a mobile phone as well as a legacy terminal interface via USB.

Wireless Local Security Network

The Wireless Local Security Network (wLSN) is a system of products containing wireless transceivers that enable full two-way communication between the system hub and self-configuring wireless devices. The wLSN Hub communicates with the Easy Series Intrusion Control Panel through a four-wire Option Bus interface and acts as the network master for the wLSN system.

Remote Programming Software (RPS)

RPS is a separate software package that allows computers equipped with the Microsoft Windows operating system and a modem to act as a remote programming, record storage, remote control, and troubleshooting tool for specific control panels.

Certifications and approvals

The Easy Series Intrusion Control Panel is designed to comply with the following certifications, approvals, and standards:

Country	Certification
France	AFNOR
Australia	A-Tick C-Tick

Region	Certification	
Europe	CE	2004/108/EC EMC Directive (EMC); 2006/95/EC Low-Voltage Directive (LVD) [DX4020][DX4020-CVS] [DX4020 CVS Programmed]
Belgium	INCERT	B-509-0045/b [IUI-EZ1]
	INCERT	B-509-0044/d [ICP-EZ2-AWT-xx]
	INCERT	B-509-0044/b
Russia	GOST	12997-84, 60065-2002, 50009-2000, 51317.3.2-99, and 51317.3.3-99
USA	UL	AMCX: Central Station Alarm Units (UL1610, UL1635), AMTB: Control Panels, SIA False Alarm Reduction, AOTX: Local Alarm Units (UL609), APAW: Police Station Alarm Units (UL365), APOU: Proprietary Alarm Units (UL1076), NBSX: Household Burglar Alarm System Units (UL1023), UTOU: Control Units and Accessories - Household System Type (UL985)
	UL	AMCX7: Central Station Alarm Units Certified for Canada (cULus), AOTX7: Local Alarm Units Certified for Canada (cULus), APAW7: Police Station Alarm Units Certified for Canada (cULus), APOU7: Proprietary Alarm Units Certified for Canada (cULus), NBSX7: Household Burglar Alarm System Units Certified for Canada (cULus), UTOU7: Control Units and Accessories - Household System Type Certified for Canada (cULus)
	CSFM	7167-1615:0223 CONTROL UNIT (HOUSEHOLD)
	FCC	ESVAL00BEZ1
Canada	IC	1249A-EZM1
China	CCC	2005031902000410
Japan	JATE	A06-0041001

Installation/configuration notes

Compatibility Information

PSTN Communicator (Integrated)	Formats: BSIA Fast Format, Contact ID, SIA, Network, (Voice Dialer) Personal Messaging: SMS Text and Voice
IP Communicator^{1,3}	Conetix IP C900V2 Dialer Capture Module DX4020 Ethernet Network Interface Module
GSM Communicator^{1,3}	Conetix ITS-300GSM Communicator ITS-DX4020-G Integrated Communicator
Radio Communicators (SAFECOM)^{1,2}	SC2104 Series Slave Communicators SC3100 Series Data Transfer Radio Communicators SC4000 Series Full Data Transfer Radio Communicator
Magnetic Contacts¹	All Bosch magnetic contacts, including recessed, terminal connection, miniature, overhead door, and surface mount.

Intrusion Detectors¹

All conventional Bosch intrusion detectors, including Blue Line, seismic, PIR, TriTech, photoelectric, and TriTech PIR Microwave.

Two-wire and Four-wire Smoke Detectors^{1,3}

Conventional Bosch 12 V smoke, heat, and photoelectric smoke detectors.

Hardwire Expansion Module

DX2010 Input Expander

Interface Module^{1,2}

D132A Smoke Detector Reversing Relay

wireless Local Security Network (wLSN) Devices¹

All Bosch wLSN devices, including the wLSN Hub (wireless expansion module), wLSN PIR and dual technology motion detectors, wLSN glass break detectors, wLSN key fobs, wLSN inertia sensors, wLSN door and window contacts, wLSN relay outputs, and wLSN sirens.

¹Assorted literature is available. Refer to the appropriate data sheet, brochure, installation guide, or user guide for additional details.

²Only sold in specific countries. Does not comply with CE.

³Availability varies according to sales regions.

Technical specifications

Dimensions

Control Center:	12 cm x 17.7 cm x 2.5 cm (4.7 in. x 7 in. x 1 in.)
AE1 Enclosure:	37 cm x 31.75 cm x 8.5 cm (14.5 in. x 12.5 in. x 3.4 in.)
Compact Enclosure	33 cm x 26.7 cm x 9.5 cm (13 in. x 10.5 in. x 3.75 in.)

Environmental Considerations

Relative Humidity:	93% ±5% at 32°C ±2°C (+90°F ±2°F)
Operating Temperature	-10°C to +49°C (+14°F to +120°F)
Storage Temperature	-10°C to +55°C (+14°F to +130°F)

Environmental Class II

Input Points

Maximum Number of Input Points:	32
Wired, Wireless, or Combination Input Points:	Eight on-board <ul style="list-style-type: none"> Hard-wire single, zone-doubling, dual end-of-line (EOL) tamper, or wireless. Input 1 also supports two-wire smoke detectors, all input points support four-wire detectors. Enclosure tamper input (does not reduce input point capacity).

Hardwire Expansion Input Points:	Up to 24 with three DX2010 Input Expander Modules (32 total). Each DX2010 provides eight additional input points. The Easy Series Intrusion Control Panel supports up to three modules.
Wireless Expansion Input Points:	Up to 32 with the wLSN Hub

Outputs

On-board:	Four <ul style="list-style-type: none"> • One configurable relay • Three configurable solid state • Internal siren driver option for speakers (output 4 only)
Wireless:	Four

Capacity

Control Centers:	Four <ul style="list-style-type: none"> • Audible voice prompts included • Accepts passcodes, token, or the wLSN key fob for user arming and disarming
DX2010 Expansion Modules:	Three on the Option Bus
DX4020 Modules:	One on the Option Bus
DX4020-G Modules:	One on the Option Bus
wLSN Hubs:	One on the Option Bus
Users:	22 (1 Master, 20 System, and 1 Duress)
Passcodes, tokens, and wLSN key fobs	21 (One per user except Duress user)
Events:	500 history events, stamped with time and date

Power Requirements

Primary Voltage Source:	110 V, +10% or -15% (47 Hz to 62 Hz) 230 V, +10% or -15% (47 Hz to 62 Hz)
Primary Voltage Input (AC):	18 V (47 Hz to 62 Hz)
Primary Voltage Input (DC):	18 V non-polarized
Secondary Voltage Input (DC):	12 VDC, 7 Ah or 18 Ah sealed lead acid rechargeable battery
Total Power:	1.4 A
Auxiliary Power:	1.0 A

Easy Series Kit Ordering Information Europe, Middle East, and Africa

Kits include one control panel, enclosure, tamper switch, oval control center, wire-in power supply (100 V to 250 V), and two RFID tokens unless noted otherwise.

Language	Commercial Type Number
----------	------------------------

None ¹	ICP-EZUAWT-00 ²
None ¹	ICP-EZ2AWT-00
English	ICP-EZ2AWT-01
British English	ICP-EZ2AWT-02
German	ICP-EZ2AWT-03
Dutch	ICP-EZ2AWT-04
Hungarian	ICP-EZ2AWT-05
Czech	ICP-EZ2AWT-06
Polish	ICP-EZ2AWT-07
Italian	ICP-EZ2AWT-08
Spanish	ICP-EZ2AWT-09
Swedish	ICP-EZ2AWT-10
French	ICP-EZ2AWT-11
Portuguese	ICP-EZ2AWT-12
Russian	ICP-EZ2AWT-14
Greek	ICP-EZ2AWT-15
Norwegian	ICP-EZ2AWT-16
Danish	ICP-EZ2AWT-17
Finnish	ICP-EZ2AWT-18
Turkish	ICP-EZ2AWT-19
Arabic	ICP-EZ2AWT-21
Bulgarian	ICP-EZ2AWT-22
Croatian	ICP-EZ2AWT-25
Flemish	ICP-EZ2AWT-27
Romanian	ICP-EZ2AWT-29
Slovak	ICP-EZ2AWT-30
Slovenian	ICP-EZ2AWT-31
Serbian	ICP-EZ2AWT-32

¹Requires a separately purchased voice module for operation.

²This kit is suitable for use in the UK and includes a wire-in power supply (230 V).

wLSN Kit 1 Ordering Information Europe, Middle East, and Africa

wLSN kits include the indicated Easy Series Kit plus one wLSN Hub, one wLSN PIR Motion Detector, one wLSN Mini Door/Window Contact, and one wLSN Keyfob.

Language	Commercial Type Numbers
English	ICP-EW1AWT-01
British English	ICP-EW1AWT-02
Dutch	ICP-EW1AWT-04

Hungarian	ICP-EW1AWT-05
Polish	ICP-EW1AWT-07
Italian	ICP-EW1AWT-08
Spanish	ICP-EW1AWT-09
Swedish	ICP-EW1AWT-10
Portuguese	ICP-EW1AWT-12
Russian	ICP-EW1AWT-14
Greek	ICP-EW1AWT-15
Danish	ICP-EW1AWT-17
Turkish	ICP-EW1AWT-19
Arabic	ICP-EW1AWT-21
Romanian	ICP-EW1AWT-29

wLSN Kit 2 Ordering Information Europe, Middle East, and Africa

wLSN kits include the indicated Easy Series Kit plus one wLSN Hub, one wLSN Dual Motion Detector, one wLSN Mini Door/Window Contact, and one wLSN Keyfob

Language	Commercial Type Numbers
Dutch	ICP-EW2AWT-04
Greek	ICP-EW2AWT-15

wLSN Kit 3 Ordering Information Europe, Middle East, and Africa

wLSN kits include the indicated Easy Series Kit plus one wLSN Hub, one wLSN PIR Motion Detector, one wLSN Smoke Detector, one wLSN Mini Door/Window Contact, and one wLSN Keyfob.

Language	Commercial Type Numbers
German	ICP- EW3AWT -03
Finnish	ICP- EW3AWT -18

wLSN Kit 4 Ordering Information Europe, Middle East, and Africa

wLSN kits include the indicated Easy Series Kit plus one wLSN Hub, two wLSN PIR Motion Detectors, one wLSN Mini Door/Window Contact, and one wLSN Keyfob.

Language	Commercial Type Numbers
French	ICP- EW4AWT -11

Easy Series Kit Ordering Information Asia Pacific, Central and South America

Kits include one control panel, enclosure, oval control center, wire-in power supply (100 V to 250 V), and two RFID tokens unless noted otherwise.

Language	Commercial Type Numbers
None ¹	ICP-EZ2AWU-00

None ²	ICP-EZ0AVU-00
English	ICP-EZ2AWU-01
Mandarin	ICP-EZ2AWU-13
Japanese	ICP-EZ2AWU-20
Australian	ICP-EZ2AWU-23
Spanish	ICP-EZ2AWU-24
Cantonese	ICP-EZ2AWU-26
Portuguese	ICP-EZ2AWU-28
Thai	ICP-EZ2AWU-33
Korean	ICP-EZ2AWU-34

¹Requires a separately purchased voice module for operation.

²Requires a separately purchased voice module, power supply, and enclosure for operation.

Easy Series Kit Ordering Information United States

Kits include one control panel, enclosure, oval control center, plug-in power supply (110 V for US), and two RFID tokens unless noted otherwise.

Language	Commercial Type Numbers
None ¹	ICP-EZ2AXU-00
English	ICP-EZ2AXU-01
Spanish	ICP-EZ2AXU-24
Korean	ICP-EZ2AXU-34

¹Requires a separately purchased voice module for operation.

Easy Series Kit Ordering Information Canada

Kits include one control panel, enclosure, oval control center, plug-in power supply (110 V for Canada), and two RFID tokens unless noted otherwise.

Language	Commercial Type Numbers
None ¹	ICP-EZ2AYU-00
English	ICP-EZ2AYU-01
French	ICP-EZ2AYU-11

¹Requires a separately purchased voice module for operation.

Ordering information

ICP-EZM2-EU Intrusion Control Panel

One control panel with AE1 Standard Enclosure, assorted hardware, and two tokens.

Order number **ICP-EZM2-EU**

ICP-EZM2-UK Intrusion Control Panel

One control panel with UK Enclosure, transformer, assorted hardware, and two tokens.
Order number **ICP-EZM2-UK**

ICP-EZM2-LC Intrusion Control Panel

One control panel printed circuit board without an enclosure.
Order number **ICP-EZM2-LC**

ICP-EZM2-R Intrusion Control Panel

Control panel, power supply, and tamper switch pre-assembled in the compact enclosure
Order number **ICP-EZM2-R**

Accessories**IUI-EZ1 Oval Control Center**

Oval control center that includes a speaker, microphone, function buttons, and a bubble level.
Order number **IUI-EZ1**

IUI-EZ1-FM Flush Mount Kit

Flush mount kit for IUI-EZ1 Control Center.
Order number **IUI-EZ1-FM**

ICP-EZTS Dual Tamper Switch

Combination tamper switch with a wire loop for additional tamper outputs.
Order number **ICP-EZTS**

ICP-EZPK Programming Key

Blue key for transferring information to and from Easy Series Intrusion Control Panels.
Order number **ICP-EZPK**

ICP-EZRU2-V3 ROM Update Key

Key for performing Flash upgrades.
Order number **ICP-EZRU2-V3**

ICP-EZPS Wire-in Power Supply

For use in Europe, the Middle East, Asia Pacific, Central and South America. 100 VAC to 240 VAC primary voltage input (AC).
Order number **ICP-EZPS**

ICP-EZPS-FRA AFNOR Power Supply

For use in France. Provides 14 VDC and isolated auxiliary power outputs.
Order number **ICP-EZPS-FRA**

ICP-TR1822-CAN Plug-in Transformer

For use in Canada. 110 VAC primary voltage input. 18 VAC, 22 VA secondary input.
Order number **ICP-TR1822-CAN**

CX4010 Plug-in Transformer

For use in North America. 110 VAC primary voltage input. 18 VAC, 22 VA secondary input.
Order number **CX4010**

TF008 Plug-in Transformer

For use in Australia and New Zealand. 240 VAC primary voltage input. 18 VAC, 1.3 A secondary input. Includes thermal fuses and a three-wire flying lead with earth connection.
Order number **TF008**

ICP-EZ-RS Trim Skirt For ICP-EZM2-R

Plastic spacer for dressing and organizing wiring into the ICP-EZM2-R enclosure
Order number **ICP-EZ-RS**

ISW-BMASK-10 Motion Detector Masks

Includes 10 snap-on plastic covers used for controlling wLSN motion detector activation (installation tool)
Order number **ISW-BMASK-10**

IUI-EZT-5 Easy Series Token Package

Five Easy Series proximity tokens.
Order number **IUI-EZT-5**

IUI-EZTR-5 Easy Series Token Package (Red)

Five Easy Series proximity tokens (Red).
Order number **IUI-EZTR-5**

IUI-EZTO-5 Easy Series Token Package (Orange)

Five Easy Series proximity tokens (Orange).
Order number **IUI-EZTO-5**

IUI-EZTG-5 Easy Series Token Package (Green)

Five Easy Series proximity tokens (Green).
Order number **IUI-EZTG-5**

IUI-EZTY-5 Easy Series Token Package (Yellow)

Five Easy Series proximity tokens (Yellow).
Order number **IUI-EZTY-5**

DX2010 Input Expander

Provides hard-wired expansion for an additional eight input points. Includes the DX2010 board.
Order number **DX2010**

Conettix DX4020 Ethernet Network Interface Module

Creates two-way communications over Ethernet networks for compatible control panels.
Order number **DX4020**

ITS-DX4020-G GPRS/GSM Communicator

Multi-function, security communicator
Order number **ITS-DX4020-G**

Software Options**Remote Programming Software International**

Software for remote or local control panel programming. Requires a Microsoft® Windows® operating system.
Order number **RPS-INTL**

Represented by:

Americas:

Bosch Security Systems, Inc.
130 Perinton Parkway
Fairport, New York, 14450, USA
Phone: +1 800 289 0096
Fax: +1 585 223 9180
security.sales@us.bosch.com
www.boschsecurity.us

Europe, Middle East, Africa:

Bosch Security Systems B.V.
P.O. Box 80002
5617 BA Eindhoven, The Netherlands
Phone: + 31 40 2577 284
Fax: +31 40 2577 330
emea.securitysystems@bosch.com
www.boschsecurity.com

Asia-Pacific:

Robert Bosch (SEA) Pte Ltd, Security
Systems
11 Bishan Street 21
Singapore 573943
Phone: +65 6571 2808
Fax: +65 6571 2699
apr.securitysystems@bosch.com
www.boschsecurity.asia

China:

Bosch (Shanghai) Security Systems Ltd.
201 Building, No. 333 Fuquan Road
North IBP
Changning District, Shanghai
200335 China
Phone +86 21 22181111
Fax: +86 21 22182398
www.boschsecurity.com.cn

America Latina:

Robert Bosch Ltda Security Systems Division
Via Anhanguera, Km 98
CEP 13065-900
Campinas, Sao Paulo, Brazil
Phone: +55 19 2103 2860
Fax: +55 19 2103 2862
latam.boschsecurity@bosch.com
www.boschsecurity.com