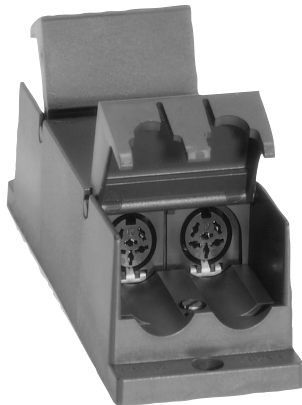


LBB 4115/00 DCN Tap-Off Unit

www.boschsecurity.com



BOSCH
Invented for life



The Tap-Off Units create short-circuit proof tap-off points on the trunk line cabling. Each tap-off point allows for connection of up to five channel selector panels or one tabletop contribution unit such as Discussion unit, Concentus unit or Interpreter Desk. A Tap-Off Unit consists of two tap-off points. The Tap-Off Unit comes complete with cable restraining clamps and includes mounting holes for fixing purposes.

Functions

Interconnections

- 2 m (78.7 in) cable terminated with a molded six-pole circular connector
- Six-pole circular connector for loop-through connections
- 2 x six-pole circular connector for trunk cable splitting and pulse regeneration purposes
- Short-circuit proof tap-off points at the system cable

Certifications and approvals

Region	Certification
Europe	CE

Technical specifications

Electrical

Max power at Tap-offs	4.5 W each
-----------------------	------------

Mechanical

Mounting	Floor, cable duct or wall mounting
Dimensions (H x W x D)	35 x 49 x 140 mm (1.4 x 1.9 x 5.5 in)
Weight	0.3 kg (0.66 lb)
Color	Charcoal (PH 10736)

Ordering information

LBB 4115/00 DCN Tap-Off Unit
2 m (78.7 in) cable, charcoal
Order number **LBB4115/00**