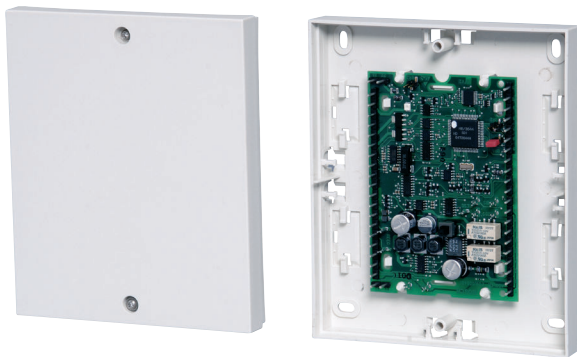


SE 210 LSN SmartKey Arming Device

www.boschsecurity.com



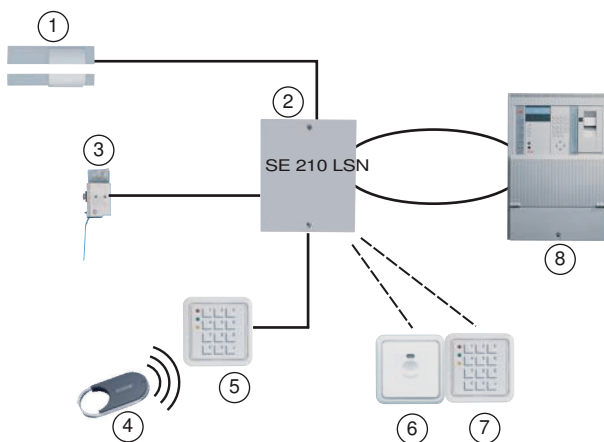
BOSCH
Invented for life



- ▶ SmartKey code keypad can be used as a "coded arming device" with integrated reader
- ▶ Code keypads can be used as a "coded arming device" in conjunction with the reader
- ▶ Simple, non-contact operation
- ▶ High security through "Challenge & Response" procedure
- ▶ Clear signaling prevents operational errors

The SE 210 LSN SmartKey arming device with connectable code keypad/reader is a system solution for arming/disarming intrusion alarm systems.

System overview



- 1 SPE blocking element
- 2 SE 210 LSN control unit
- 3 Bolt contact
- 4 SmartKey keys

- 5 Code keypad with integrated reader
- 6 Reader
- 7 Code keypad
- 8 LSN control panel

Functions

Individual system components can be put together depending on the usage conditions required. Operation modes with or without the SPE blocking element are possible.

The SE 210 LSN control unit processes the status reports of all components in the system, communicates these reports to the intrusion alarm system and controls the SPE blocking element. The control unit has a connection line for connecting bolt contacts and two primary lines. The control unit is mounted in the secure area.

SmartKey code keypad with integrated reader

The SmartKey code keypad with integrated reader combines the function of the reader and the SmartKey code keypad in one unit. Initial set-up and operation is the same as with one reader + one code keypad. The scanner for the SmartKey key is located in the middle of the unit (not visible from the outside). To operate, you hold the SmartKey key in the middle of the

SmartKey code keypad (with integrated reader) at a maximum distance of 2 cm. The code keypad with integrated reader allows arming and disarming of the intrusion alarm system only after the correct combination of numbers has been entered at the code keypad. If someone is forced to disarm the intrusion alarm system, a silent alarm (hold-up alarm) can be set off remotely via the code keypad. The code keypad can be surface or recessed mounted (outside the secure area).

Reader

Arming and disarming is carried out using an electronic key on the reader. LED and buzzer provide information about the status of the system as well as operation. The reader can be surface mounted or recessed mounted (outside the secure area).

Reader and code keypad

The code keypad, used in conjunction with the reader, allows arming and disarming of the intrusion alarm system only after the correct combination of numbers has been entered at the keypad. If someone is forced to disarm the intrusion alarm system, a silent alarm (hold-up alarm) can be set off remotely via the code keypad. The keypad can be surface mounted or recessed mounted (outside the secure area). With recessed mounting, two IP55 recessed sockets can be used in conjunction, if necessary. One on top of the other or next to each other.

Reader and lockable code keypad

The code keypad, used in conjunction with the reader, allows arming and disarming of the intrusion alarm system only after the correct combination of numbers has been entered at the keypad. If someone is forced to disarm the intrusion alarm system, a silent alarm (hold-up alarm) can be set off remotely via the code keypad. The code keypad can be surface or recessed mounted (outside the secure area).

Keys with a security card

The system operates like a locking device. The key kit consists of a set number of valid keys and a security card. The control unit is initialized using the security card, and accepts only the keys of the key kit. To order additional keys, the security card must be sent to the manufacturer together with the order. The keys are labeled with a consecutive key number, a security card number and an 8-digit identification number.

Standard key (without security card)

The keys are not numbered and an unlimited number can be read in. The keys are labeled with an 8-digit identification number.

SPE blocking element

The SPE blocking element is an additional lock for the door and is intended to prevent unauthorized entry to the armed area. The SPE blocking element must always be mounted in the secure area with a kit to allow it to be fitted out for different door types.

A conventional bolt contact should be fitted to the control unit (not part of the scope of delivery). A conventional standard magnet contact can be connected to the control unit (not part of the scope of delivery).

Certifications and approvals

Country	Certification	SE 210 LSN
DE	VdS	G 101019, C

Region	Certification	
Germany	VdS	G 101019, C SmartKey arming device: LSN VdS G 101019

Installation/configuration notes

- A maximum of 16 SmartKey keys per system can be used if the SmartKey key is read in at the control unit. In other respects, the number of SmartKey keys depends on the control panel: NZ 300 LSN = 40 keys, UEZ = 255 keys.
- SE 210 LSN without bolt contact: Due to the time shift caused by the LSN, up to four SE 210 LSN can be actuated in 200 ms (not arming time). In general, a bolt contact should be mounted.
- If several LSN SmartKey systems need to block simultaneously in one area (motorized block locking function), the control units must be in the same LSN processing assembly (on LVM for UEZ, on NV120 for UGM).
- The SPE blocking element is always mounted in the secure area with a mounting kit.

Parts included

Type	Qty.	Component
SE 210 LSN	1	SmartKey arming device control unit

Technical specifications

SE 210 LSN control unit

Operating voltage	9.6 V to 30 V
Total current consumption including blocking element at an input voltage of 9.6 V	
• Standby LSN part	3.53 mA
• Standby additional supply	41 mA
• Bolt is engaged	110 mA for 200 ms
• Bolt blocked	470 mA for 200 ms
Total current consumption including blocking element at an input voltage of 28 V	
• Standby LSN part	3.53 mA

• Standby additional supply	30 mA
• Bolt is engaged	65 mA for 200 ms
• Bolt blocked	200 mA for 200 ms
Environmental conditions	
• Environmental class	2
• Protective system	IP 30
• Operating temperature	-5°C to +45°C
• Storage temperature	-40°C to +85°C
Housing	
• Material	ABS
• Color	RAL 9002
Dimensions (W x H x D)	135 x 160 x 35 mm
Weight	0.25 kg

Ordering information

SE 210 LSN SmartKey Arming Device

Order number **4998113805**

Accessories

SmartKey code keypad with integrated reader

Non-contact reader for SmartKey key and user code entry

Order number **4998113948**

Spare keypad membranes with screen

For replacing the membrane keypad or screen for the SmartKey code keypad with integrated reader

Order number

Lockable code keypad

Can be used in conjunction with the reader

Order number **2799380623**

SmartKey reader

Non-contact reader for SmartKey key

Order number **4998021692C20**

IUI-SKK-3S key set

3 x SmartKey keys and security card

Order number **IUI-SKK-3S**

IUI-SKK-1S additional key

1 x additional SmartKey key for IUI-SKK-3S key set

Order number **IUI-SKK-1S**

IUI-SKK-1 standard key

1 x SmartKey key without security card

Order number **IUI-SKK-1**

SmartKey hybrid key card

As combined card with two transponders

Order number **4998112166**

SPE blocking element incl. surface mounting kit

For installation on frame/door

Order number **4998013609C20;4998149110**

SPE blocking element incl. flush mounting kit

For installation in frame/door

Order number **4998021691C20;4998149110**

SPE blocking element incl. glass kit

For installation on glass doors

Order number **4998019339.C20;4998013609C20;4998149110**

SPE blocking element incl. NBS 10 kit

For upgrading the NBS 10

Order number **4998149110;4998040651C20**

Represented by:

Americas:

Bosch Security Systems, Inc.
130 Perinton Parkway
Fairport, New York, 14450, USA
Phone: +1 800 289 0096
Fax: +1 585 223 9180
security.sales@us.bosch.com
www.boschsecurity.us

Europe, Middle East, Africa:

Bosch Security Systems B.V.
P.O. Box 80002
5617 BA Eindhoven, The Netherlands
Phone: + 31 40 2577 284
Fax: +31 40 2577 330
emea.securitysystems@bosch.com
www.boschsecurity.com

Asia-Pacific:

Robert Bosch (SEA) Pte Ltd, Security
Systems
11 Bishan Street 21
Singapore 573943
Phone: +65 6571 2808
Fax: +65 6571 2699
apr.securitysystems@bosch.com
www.boschsecurity.asia

China:

Bosch (Shanghai) Security Systems Ltd.
201 Building, No. 333 Fuquan Road
North IBP
Changning District, Shanghai
200335 China
Phone +86 21 22181111
Fax: +86 21 22182398
www.boschsecurity.com.cn

America Latina:

Robert Bosch Ltda Security Systems Division
Via Anhanguera, Km 98
CEP 13065-900
Campinas, Sao Paulo, Brazil
Phone: +55 19 2103 2860
Fax: +55 19 2103 2862
latam.boschsecurity@bosch.com
www.boschsecurity.com