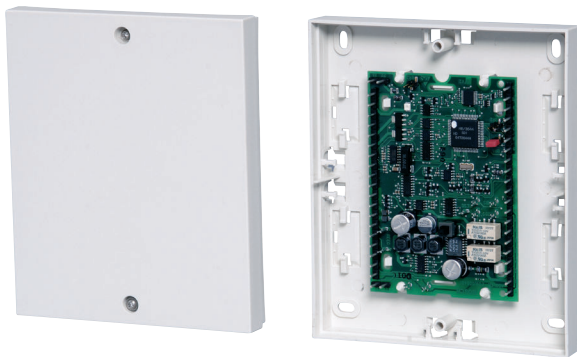


# SE 110 LSN SmartKey Arming Device

www.boschsecurity.com



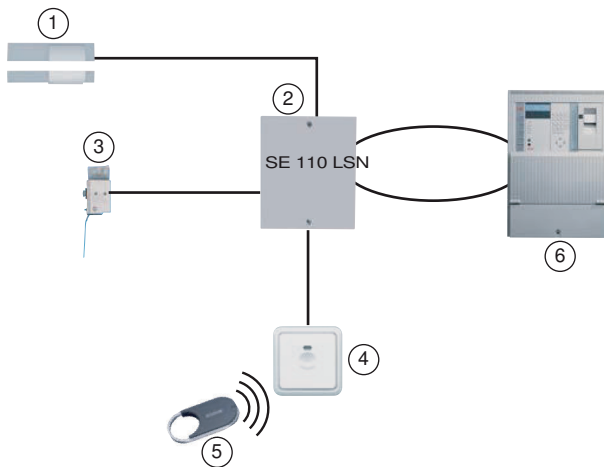
**BOSCH**  
Invented for life



- ▶ Simple, non-contact operation
- ▶ High security through “Challenge & Response” procedure
- ▶ Clear signaling prevents operational errors
- ▶ No manipulation or tampering possible
- ▶ Detailed logging of arming via the LSN control panel

The SE 110 LSN SmartKey arming device is a system solution for arming/disarming intrusion systems.

## System overview



- 1 SPE blocking element
- 2 SE 110 LSN control unit
- 3 Bolt contact
- 4 Reader

- 5 SmartKey keys
- 6 LSN control panel

## Functions

Individual system components can be put together depending on the usage conditions required. Operation modes with or without the SPE blocking element are possible.

### SE 110 LSN

The SE 110 LSN control unit processes the status reports of all components in the system, communicates these reports to the intrusion system and controls the blocking element. The control unit has a lock line for connecting bolt contact and two zones for connecting e.g. magnet contacts. The control unit is mounted in the secure area.

### Reader

An intrusion alarm system is armed and disarmed using an electronic key on the reader. LED and buzzer provide information about the status of the system as well as operation. The reader can be surface mounted or recessed mounted (outside the secure area).

### Keys with a security card

The system operates like a locking device. The key kit consists of a set number of valid keys and a security card. The control unit is initialized using the security card, and accepts only the keys from the key kit. To order additional keys, the security card must be sent to the manufacturer together with the order. The keys are labeled with a consecutive key number, a security card number and an 8-digit identification number.

### Standard key (without security card)

The keys are not numbered and an unlimited number can be read in. The keys are labeled with an 8-digit identification number.

### SPE blocking element

The SPE blocking element is an additional lock for the door and is meant to prevent unauthorized entry to the armed area. The SPE locking element must always be mounted in the secure area with a kit to allow it to be fitted out for different door types.

Motorized block locking function: All blocking elements for an area are simultaneously engaged and disengaged.

A conventional bolt contact should be fitted to the control unit (not part of the scope of delivery).

A conventional standard magnet contact can be connected to the control unit (not part of the scope of delivery).

### Certifications and approvals

Country	Certification	SE 110 LSN
DE	VdS	G 101019, C

Region	Certification
	VdS G 101019
Germany	VdS G 101019, C SmartKey arming device: LSN VdS G 101019

### Installation/configuration notes

- A maximum of 16 SmartKey keys can be used per system if the SmartKey keys learned in at the control unit. In other respects, the number of SmartKey keys depends on the control panel: NZ 300 LSN = 40 keys, UEZ = 255 keys.
- SE 110 LSN without bolt contact: Due to the time shift caused by the LSN, up to four SE 110 LSN can be actuated within 200 ms (not arming time). In general, a bolt contact should be mounted.
- If several LSN SmartKey systems need to block simultaneously in one area (motorized block locking function), the control units must be in the same LSN processing assembly (on LVM for UEZ, on NV 120 for UGM).
- The SPE blocking element is always mounted in the secure area with a mounting kit.

### Parts included

Type	Qty.	Component
SE 110 LSN	1	SmartKey arming device, control unit

### Technical specifications

SE 110 LSN control unit

Operating voltage	9.6 V to 30 V
-------------------	---------------

Total current consumption including blocking element at an input voltage of 9.6 V

• Standby LSN part	3.53 mA
• Standby additional supply	41 mA
• Bolts are engaged	110 mA for 200 ms
• Bolts blocked	470 mA for 200 ms

Total current consumption including blocking element at a 28 V input voltage

• Standby LSN part	3.53 mA
• Standby additional supply	30 mA
• Bolts are engaged	65 mA for 200 ms
• Bolts blocked	200 mA for 200 ms

Environmental conditions

• Environmental class	2
• Protective system	IP 30
• Operating temperature	-5°C to +45°C
• Storage temperature	-40°C to +85°C

Housing

• Material	ABS
• Color	RAL 9002

Dimensions (W x H x D)	135 x 160 x 35 mm
------------------------	-------------------

Weight	0.25 kg
--------	---------

### Ordering information

#### SE 110 LSN SmartKey Arming Device

Order number **4998113804**

#### Accessories

##### SmartKey reader

Non-contact reader for SmartKey key

Order number **4998021692C20**

##### IUI-SKK-3S key set

3 x SmartKey keys and security card

Order number **IUI-SKK-3S**

**IUI-SKK-1S additional key**

1 x additional SmartKey key for IUI-SKK-3S key set  
Order number **IUI-SKK-1S**

---

**IUI-SKK-1 standard key**

1 x SmartKey key without security card  
Order number **IUI-SKK-1**

---

**SmartKey hybrid key card**

As combined card with two transponders  
Order number **4998112166**

---

**SPE blocking element incl. surface mounting kit**

For installation on frame/door  
Order number **4998013609C20;4998149110**

---

**SPE blocking element incl. flush mounting kit**

For installation in frame/door  
Order number **4998021691C20;4998149110**

---

**SPE blocking element incl. glass kit**

For installation on glass doors  
Order number **4998019339.C20;4998013609C20;4998149110**

---

**SPE blocking element incl. NBS 10 kit**

For upgrading the NBS 10  
Order number **4998149110;4998040651C20**

---

**Represented by:**

**Americas:**

Bosch Security Systems, Inc.  
130 Perinton Parkway  
Fairport, New York, 14450, USA  
Phone: +1 800 289 0096  
Fax: +1 585 223 9180  
security.sales@us.bosch.com  
www.boschsecurity.us

**Europe, Middle East, Africa:**

Bosch Security Systems B.V.  
P.O. Box 80002  
5617 BA Eindhoven, The Netherlands  
Phone: + 31 40 2577 284  
Fax: +31 40 2577 330  
emea.securitysystems@bosch.com  
www.boschsecurity.com

**Asia-Pacific:**

Robert Bosch (SEA) Pte Ltd, Security Systems  
11 Bishan Street 21  
Singapore 573943  
Phone: +65 6571 2808  
Fax: +65 6571 2699  
apr.securitysystems@bosch.com  
www.boschsecurity.asia

**China:**

Bosch (Shanghai) Security Systems Ltd.  
201 Building, No. 333 Fuquan Road  
North IBP  
Changning District, Shanghai  
200335 China  
Phone +86 21 22181111  
Fax: +86 21 22182398  
www.boschsecurity.com.cn

**America Latina:**

Robert Bosch Ltda Security Systems Division  
Via Anhanguera, Km 98  
CEP 13065-900  
Campinas, Sao Paulo, Brazil  
Phone: +55 19 2103 2860  
Fax: +55 19 2103 2862  
latam.boschsecurity@bosch.com  
www.boschsecurity.com