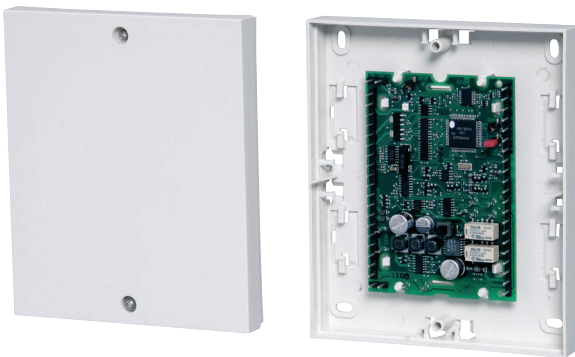


SE 50 LSN SmartKey Blocking Unit

www.boschsecurity.com



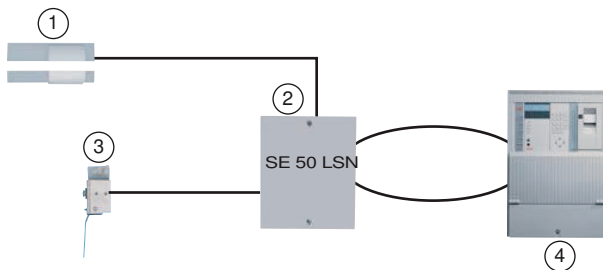
BOSCH
Invented for life



- ▶ The SE 50 LSN control unit is programmable via the control panel
- ▶ The SPE blocking element is controlled via the intrusion control panel
- ▶ The SPE blocking element is suitable for various types of doors

The SE 50 LSN SmartKey blocking unit is used as a mechanical lock for doors.

System overview



- 1 SPE blocking element
- 2 SE 50 LSN control unit
- 3 Bolt contact
- 4 LSN control panel

Functions

The SE 50 LSN control unit controls the SPE blocking element depending on the state of the bolt contact and/or the intrusion control panel. When the door is closed (bolt contact is activated), the bolt of the SPE blocking element is automatically engaged. When the

door is unlocked, the bolt is disengaged if the detection area is disarmed. When the detection area is activated, the bolt remains engaged, thus preventing unintended access to the area. If no bolt contact is present, the bolt of the SPE blocking element is engaged by the activation signal issued by the control panel.

SE 50 LSN

The SE 50 LSN control unit processes the status reports of all components in the system, communicates these reports to the intrusion system and controls the SPE blocking element. The control unit has a lock line for connecting bolt contacts and two primary lines for connecting e.g. magnet contacts. The control unit is mounted in the secure area.

SPE blocking element

The SPE blocking element is an additional lock for the door and is meant to prevent unauthorized entry to the armed area. The SPE locking element must always be mounted in the secure area with a kit to allow it to be fitted out for different door types.

Motorized block locking function:

All blocking elements for an area are engaged and disengaged simultaneously. A conventional bolt contact should be fitted to the control unit (not part of the scope of delivery).

A conventional standard magnet contact can be connected to the control unit (not part of the scope of delivery).

Certifications and approvals

| Country | Certification | SE 50 LSN |
|---------|---------------|--|
| DE | VdS | G 101018, C |
| Region | Certification | |
| Germany | VdS | G 101018, C Blocking unit: SE 50-LSN VdS G 101018 |

Installation/configuration notes



Notice

The SmartKey is fully operational only in conjunction with a blocking element.

The SPE blocking element is always mounted in the secure area with a mounting kit. If several LSN SmartKey systems need to block simultaneously in one area (motorized block locking function), the control units must be in the same LSN processing assembly (on LVM for UEZ, on NV120 for UGM).

SE 50 LSN without bolt contact: Due to the time shift caused by the LSN, up to four SE 110 LSN can be actuated in 200 ms (not arming time) In general, a bolt contact should be mounted.

Parts included

| Type | Qty. | Component |
|-----------|------|--------------------------------------|
| SE 50 LSN | 1 | SmartKey blocking unit, control unit |

Technical specifications

SE 50 LSN control unit

Operating voltage 9.6 V to 30 V

Total current consumption including blocking element at an input voltage of 9.6 V

- | | |
|-----------------------------|-------------------|
| • Standby LSN part | 3.53 mA |
| • Standby additional supply | 41 mA |
| • Bolt is engaged | 110 mA for 200 ms |
| • Bolt blocked | 470 mA for 200 ms |

Total current consumption including blocking element at an input voltage of 28 V

- | | |
|-----------------------------|-------------------|
| • Standby LSN part | 2.5 mA |
| • Standby additional supply | 30 mA |
| • Bolt is engaged | 65 mA for 200 ms |
| • Bolt blocked | 200 mA for 200 ms |

Environmental conditions

- | | |
|-------------------------|----------------|
| • Environmental class | 2 |
| • Protective system | IP 30 |
| • Operating temperature | -5°C to +45°C |
| • Storage temperature | -40°C to +85°C |

Housing

- | | |
|------------|----------|
| • Material | ABS |
| • Color | RAL 9002 |

Dimensions (W x H x D) 135 x 160 x 35 mm

Weight 0.25 kg

SPE blocking element

Max. distance between bolt and the other side 4 mm

Break force for emergency open 0.8 to 1 kN

Cable to control unit max. 6 m, 6-pole, shielded, cast-in

Environmental conditions

- | | |
|-------------------------|----------------|
| • Protective system | IP 44 |
| • Operating temperature | -25°C to +55°C |
| • Storage temperature | -40°C to +85°C |

Housing

- | | |
|------------|----------|
| • Material | ABS |
| • Color | RAL 9002 |

Dimensions (W x H x D) 118 x 28 x 16

Weight

- | | |
|---------------------------|---------|
| • Surface mounted models | 0.45 kg |
| • Recessed mounted models | 0.40 kg |

Ordering information

SE 50 LSN SmartKey Blocking Unit

Order number **4998040607**

Accessories

SPE blocking element incl. surface mounting kit

For installation on frame/door

Order number **4998013609C20;4998149110**

SPE blocking element incl. flush mounting kit

For installation in frame/door

Order number **4998021691C20;4998149110**

SPE blocking element incl. glass kit

For installation on glass doors

Order number **4998019339.C20;4998013609C20;4998149110**

SPE blocking element incl. NBS 10 kit
For upgrading the NBS 10
Order number **4998149110;4998040651C20**

Represented by:

Americas:

Bosch Security Systems, Inc.
130 Perinton Parkway
Fairport, New York, 14450, USA
Phone: +1 800 289 0096
Fax: +1 585 223 9180
security.sales@us.bosch.com
www.boschsecurity.us

Europe, Middle East, Africa:

Bosch Security Systems B.V.
P.O. Box 80002
5617 BA Eindhoven, The Netherlands
Phone: + 31 40 2577 284
Fax: +31 40 2577 330
emea.securitysystems@bosch.com
www.boschsecurity.com

Asia-Pacific:

Robert Bosch (SEA) Pte Ltd, Security
Systems
11 Bishan Street 21
Singapore 573943
Phone: +65 6571 2808
Fax: +65 6571 2699
apr.securitysystems@bosch.com
www.boschsecurity.asia

China:

Bosch (Shanghai) Security Systems Ltd.
201 Building, No. 333 Fuquan Road
North IBP
Changning District, Shanghai
200335 China
Phone +86 21 22181111
Fax: +86 21 22182398
www.boschsecurity.com.cn

America Latina:

Robert Bosch Ltda Security Systems Division
Via Anhanguera, Km 98
CEP 13065-900
Campinas, Sao Paulo, Brazil
Phone: +55 19 2103 2860
Fax: +55 19 2103 2862
latam.boschsecurity@bosch.com
www.boschsecurity.com