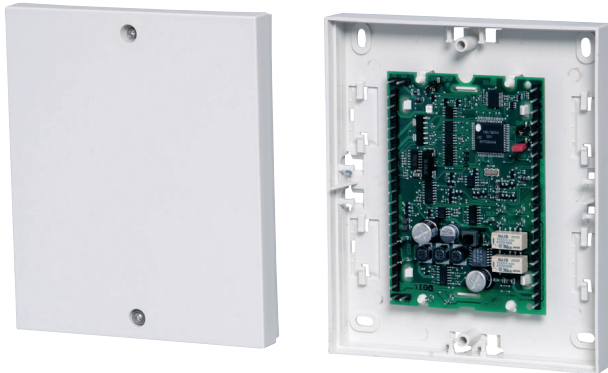




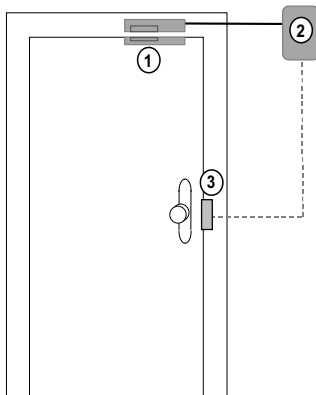
SE 50 GLT SmartKey Blocking Unit



- ▶ The SE 50 conventional control unit is programmable via the control panel
- ▶ The SPE blocking element is controlled via the intrusion control panel
- ▶ The SPE blocking element is suitable for various types of doors

The SmartKey blocking unit (conventional) is used to mechanically lock doors.

System Overview



- 1 SPE blocking element
- 2 SE 50 conventional (GLT) control unit
- 3 Bolt contact

Functions

The SE 50 GLT control unit controls the blocking element depending on the state of the bolt contact and/or the intrusion control panel. When the door is closed (bolt contact is activated), the bolt of the blocking element is automatically engaged. When the door is unlocked, the bolt is disengaged if the detection area is disarmed. When the detection area is activated, the bolt remains engaged, thus preventing unauthorized access to the area. If no bolt contact is present, the bolt of the blocking element is engaged by the activation signal issued by the control panel.

SE 50 GLT

The SE 50 conventional (GLT) control unit processes the status reports of all components in the system, communicates these reports to the intrusion system and controls the blocking element. The control unit is mounted in the secure area.

SPE blocking element

The SPE blocking element is an additional lock for the door and is meant to prevent unauthorized entry to the armed area. The blocking element must always be mounted in the secure area with a kit to allow it to be fitted out for different door types.

A conventional bolt contact should be fitted to the control unit (not part of the scope of delivery).

A conventional standard magnet contact can be connected to the control unit (not part of the scope of delivery).

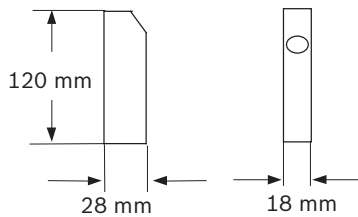
Certifications and Approvals

Region	Certification
Germany	VdS G 101017, C SE 50 GLT
Coun- try	Certification
DE	VdS G 101017, C

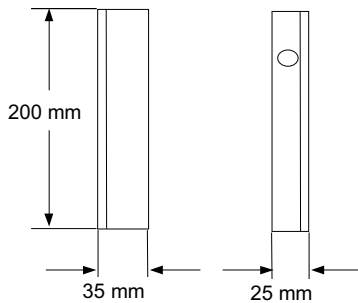
Installation/Configuration Notes

The blocking element is always mounted in the secure area with a mounting kit. The diagram shows the dimensions for the installation kit for door or frame. Both a standard collar and an angled collar are available.

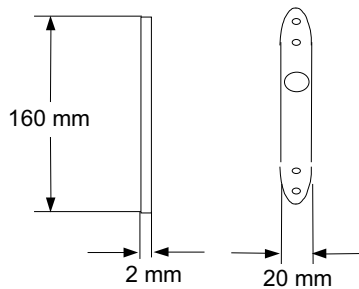
Blocking element



Angled collar



Standard collar



Parts Included

Type	Qty.	Component
SE 50 GLT	1	Control unit

Technical Specifications

SE 50 conventional (GLT) control unit

Operating voltage	10.8 V to 30.0 V
Total current consumption including blocking element	<ul style="list-style-type: none"> Bolt engaged 38 mA Bolt disengaged 53 mA When being engaged 140 mA for 300 ms When blocking 200 mA for 200 ms
Environmental conditions	<ul style="list-style-type: none"> Protective system IP 30 Operating temperature -5°C to +45°C Storage temperature -40°C to +85°C
Housing	<ul style="list-style-type: none"> Material ABS Color RAL 9002
Dimensions (W x H x D)	135 x 160 x 35 mm
Weight	0.25 kg

SPE blocking element

Max. distance between bolt and the other side	4 mm
Break force for emergency open	0.8 to 1 kN
Cable to control unit	max. 6 m, 6-pole, shielded, cast-in
Environmental conditions	<ul style="list-style-type: none"> Protective system IP 44 Operating temperature -25°C to +55°C Storage temperature -40°C to +85°C
Housing	<ul style="list-style-type: none"> Material ABS Color RAL 9002
Dimensions (W x H x D)	118 x 28 x 16
Weight	<ul style="list-style-type: none"> Surface mounted models 0.45 kg Recessed mounted models 0.40 kg

Ordering Information

SE 50 GLT SmartKey Blocking Unit	4998040606
Accessories	
SPE blocking element incl. surface mounting kit For installation on frame/door	4998013609C20;4 998149110
SPE blocking element incl. flush mounting kit For installation in frame/door	4998021691C20;4 998149110
SPE blocking element incl. glass kit For installation on glass doors	4998019339.C20;4 998013609C20;49 98149110
SPE blocking element incl. NBS 10 kit For upgrading the NBS 10	4998149110;4998 040651C20
Blocking element	4998149110
Kit for surface mounting, space for magnetic contact	4998013609C20
Kit for recessed mounting (door frame)	4998021691C20
Kit for mounting in glass doors	4998019339C20
Kit for upgrading NBS 10	4998040651C20

Americas:

Bosch Security Systems, Inc.
130 Perinton Parkway
Fairport, New York, 14450, USA
Phone: +1 800 289 0096
Fax: +1 585 223 9180
security.sales@us.bosch.com
www.boschsecurity.us

Europe, Middle East, Africa:

Bosch Security Systems B.V.
P.O. Box 80002
5600 JB Eindhoven, The Netherlands
Phone: +31 40 2577 284
Fax: +31 40 2577 330
emea.securitysystems@bosch.com
www.boschsecurity.com

Asia-Pacific:

Bosch Security Systems Pte Ltd
38C Jalan Pemimpin
Singapore 577180
Phone: +65 6319 3450
Fax: +65 6319 3499
apr.securitysystems@bosch.com
www.boschsecurity.com

Represented by