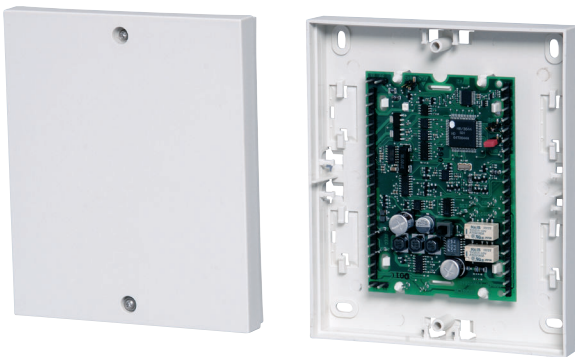


SE 50 GLT SmartKey Blocking Unit

www.boschsecurity.com



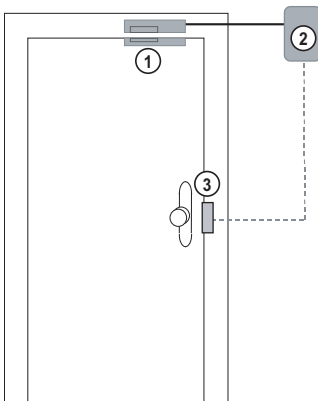
BOSCH
Invented for life



- ▶ The SE 50 conventional control unit is programmable via the control panel
- ▶ The SPE blocking element is controlled via the intrusion control panel
- ▶ The SPE blocking element is suitable for various types of doors

The SmartKey blocking unit (conventional) is used to mechanically lock doors.

System overview



- 1 SPE Blocking element
- 2 SE 50 conventional (GLT) control unit
- 3 Bolt contact

Functions

The SE 50 GLT control unit controls the blocking element depending on the state of the bolt contact and/or the intrusion control panel. When the door is closed (bolt contact is activated), the bolt of the blocking element is automatically engaged. When the door is unlocked, the bolt is disengaged if the detection area is disarmed. When the detection area is activated, the bolt remains engaged, thus preventing unintended access to the area. If no bolt contact is present, the bolt of the blocking element is engaged by the activation signal issued by the control panel.

SE 50 GLT

The SE 50 conventional (GLT) control unit processes the status reports of all components in the system, communicates these reports to the intrusion alarm system and controls the blocking element. The control unit is mounted in the secure area.

SPE blocking element

The SPE blocking element is an additional lock for the door and is intended to prevent unauthorized entry to the armed area. The blocking element must always be mounted in the secure area with a kit to allow it to be fitted out for different door types.

A conventional bolt contact should be fitted to the control unit (not part of the scope of delivery).

A conventional standard magnet contact can be connected to the control unit (not part of the scope of delivery).

Certifications and approvals

Region	Certification	
Germany	VdS	G 106066, C SE 50 GLT G 106066
Europe	CE	SE 50 GLT
	CE	SmartKey

Installation/configuration notes

The blocking element is always mounted in the secure area with a mounting kit.

Parts included

Type	Qty.	Component
SE 50 GLT	1	Control unit

Technical specifications

SE 50 GLT control unit

Operating voltage	10.8 V to 30.0 V
Total current consumption including blocking element	
• Bolt disengaged	38 mA
• Bolt engaged	53 mA
• When being engaged	140 mA for 300 ms
• When blocking	200 mA for 200 ms
Environmental conditions	
• Protection category	IP 30
• Operating temperature	-5 °C to +45 °C
• Storage temperature	-40 °C to +85 °C
Housing	
• Material	ABS
• Color	RAL 9002
Dimensions (H x W x D)	160 x 135 x 35 mm
Weight	0.25 kg

SPE blocking element

Bolts max. distance to locking plate	4 mm
Break force for emergency open	0.8 to 1 kN
Cable to control unit	Max. 6 m, 6-pin, shielded, permanently cast
Environmental conditions	
• Protection category	IP 44
• Operating temperature	-25 °C to +55 °C
• Storage temperature	-40 °C to +85 °C
Housing	
• Material	ABS
• Color	RAL 9002
Dimensions (H x W x D)	28 x 118 x 16 mm
Weight	
• Surface mounting models	0.45 kg
• Flush mounting models	0.40 kg

Ordering information

SE 50 GLT SmartKey Blocking Unit

For mechanically locking doors

Order number **IUI-SKCU0C-50**

Accessories

SPE blocking element incl. glass kit

For installation on glass doors

Order number **4998019339.C20;4998013609C20;4998149110**

SPE blocking element incl. NBS 10 kit

For upgrading the NBS 10

Order number **4998149110;4998040651C20**

SPE blocking element incl. flush mounting kit

For installation in frame/door

Order number **4998021691C20;4998149110**

SPE blocking element incl. surface mounting kit

For installation on frame/door

Order number **4998013609C20;4998149110**

Represented by:

Americas:

Bosch Security Systems, Inc.
130 Perinton Parkway
Fairport, New York, 14450, USA
Phone: +1 800 289 0096
Fax: +1 585 223 9180
security.sales@us.bosch.com
www.boschsecurity.us

Europe, Middle East, Africa:

Bosch Security Systems B.V.
P.O. Box 80002
5617 BA Eindhoven, The Netherlands
Phone: + 31 40 2577 284
Fax: +31 40 2577 330
emea.securitysystems@bosch.com
www.boschsecurity.com

Asia-Pacific:

Robert Bosch (SEA) Pte Ltd, Security
Systems
11 Bishan Street 21
Singapore 573943
Phone: +65 6571 2808
Fax: +65 6571 2699
apr.securitysystems@bosch.com
www.boschsecurity.asia

China:

Bosch (Shanghai) Security Systems Ltd.
201 Building, No. 333 Fuquan Road
North IBP
Changning District, Shanghai
200335 China
Phone +86 21 22181111
Fax: +86 21 22182398
www.boschsecurity.com.cn

America Latina:

Robert Bosch Ltda Security Systems Division
Via Anhanguera, Km 98
CEP 13065-900
Campinas, Sao Paulo, Brazil
Phone: +55 19 2103 2860
Fax: +55 19 2103 2862
latam.boschsecurity@bosch.com
www.boschsecurity.com