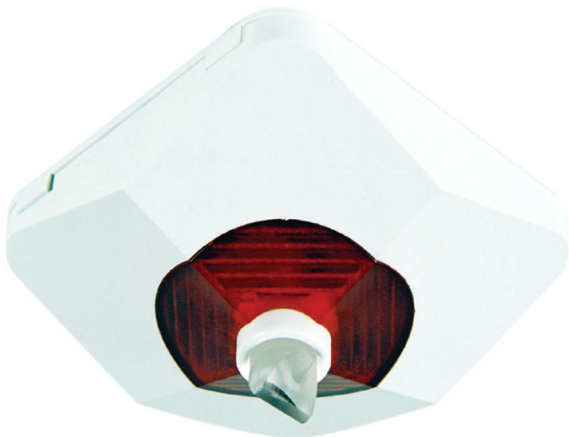




MPA External Detector Alarm Display according to DIN 14623



The External Detector Alarm Display is required if the detector is not directly visible or has been mounted in false ceilings or false floors. The External Detector Alarm Display should be mounted in corridors or access pathways to the corresponding building sections or rooms.

If shielded cables are used, make sure that the total cable length does not exceed 500 m (= sum of all cables to the External Detector Alarm Display within one loop or stub).

Certifications and Approvals

Region	Certification	
Germany	VdS	G 294052 MPA
	PTB	01 ATEX 2163 X OTC/OC 310/410, OT/O/T 300/400, DKM/SKM 120, DM/SM 210, MPA
Europe	CE	MPA
	CPD	0786-CPD-20765 MPA
Poland	CNBOP	2095/2006 MPA

Installation/Configuration Notes

Note If unshielded cables are used, the cable length between a LSN detector and an External Detector Alarm Display is restricted to a maximum of 3 m.

Technical Specifications

Operating voltage	9 V DC ... 30 V DC
Current consumption for display	<ul style="list-style-type: none"> • T.2 Approx. 2 mA • T.3 Limited to approx. 13 mA • T.4 Limited to 20 mA maximum
Display medium	1 LED via a light guide
Permissible wire gauge	0.6 mm ... 0.8 mm
Dimensions	85 x 85 x 50 mm
Weight	65 g
Protection class as per IEC 60529	IP 40

Ordering Information

MPA External Detector Alarm Display according to DIN 14623 **MPA**
the transparent red alarm display conforms to DIN 14623

Americas:
Bosch Security Systems, Inc.
130 Perinton Parkway
Fairport, New York, 14450, USA
Phone: +1 800 289 0096
Fax: +1 585 223 9180
security.sales@us.bosch.com
www.boschsecurity.us

Europe, Middle East, Africa:
Bosch Security Systems B.V.
P.O. Box 80002
5600 JB Eindhoven, The Netherlands
Phone: +31 40 2577 284
Fax: +31 40 2577 330
emea.securitysystems@bosch.com
www.boschsecurity.com

Asia-Pacific:
Robert Bosch (SEA) Pte Ltd, Security Systems
11 Bishan Street 21
Singapore 573943
Phone: +65 6258 5511
Fax: +65 6571 2698
apr.securitysystems@bosch.com
www.boschsecurity.com

Represented by