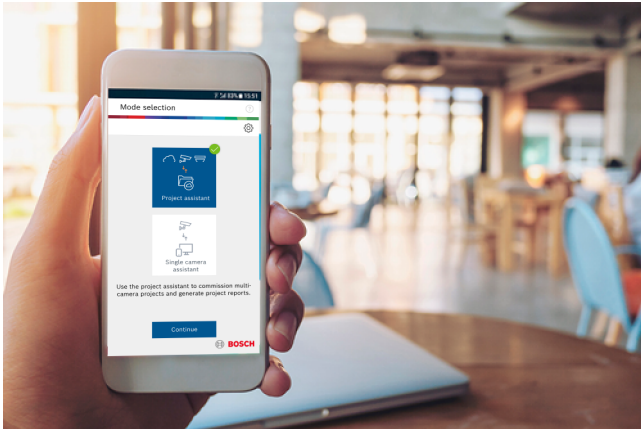


## MFT-PA Project Assistant



- ▶ Quick and easy configuration of basic camera settings
- ▶ Simple set up for camera field of view
- ▶ Offline pre-configuration and sharing of project files for collaborating among colleagues, across sites
- ▶ Comprehensive documentation and reporting of the installation and project progress
- ▶ Intuitive camera calibration feature to ensure the most accurate Intelligent Video Analytics results

**Project Assistant** by Bosch is the market's most easy-to-use app for initial installation and basic configuration of IP cameras. Off-site and without connection to the camera, basic configurations can be created and then shared with colleagues. On-site, these pre-configurations can be pushed onto the camera, making the installation procedure easier and less time-consuming. Cameras previously configured can be integrated as well. The app allows easy viewing and adjustment of the camera's field of view. The app automatically generates a comprehensive report of the commissioned cameras.

### System overview

#### Installation

The Project Assistant app covers all basic camera settings like name, password, network settings, date and time, and the camera's field of view alignment.

#### Camera identification

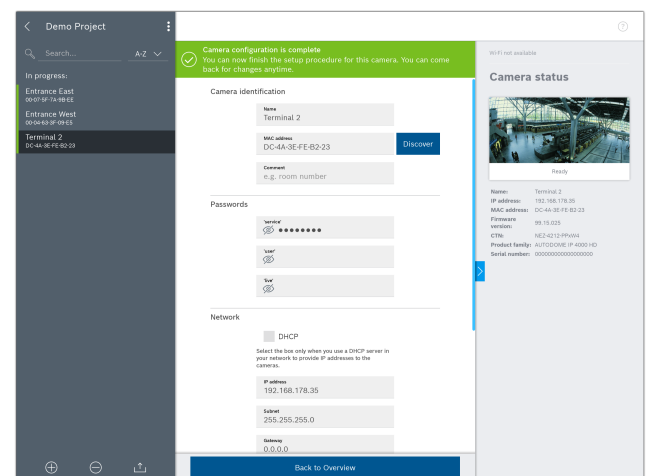
Local area network scans, direct connection via IP address, and QR-code scan for MAC-address import and automatic connection are available to identify cameras.

#### Single Camera Assistant

The quick mode allows you to connect to a camera and set basic camera settings online without having to go through the project setup phase beforehand.

#### Project Assistant

The Project Assistant app allows you to cluster and preconfigure cameras in projects. Project defaults can be defined for network settings and passwords and are automatically used for added cameras. Both project defaults and dedicated camera configurations can be defined offline and pushed onto the cameras when connecting. Project and camera settings can also be exported to as well as imported from project and .csv files (for example Excel).

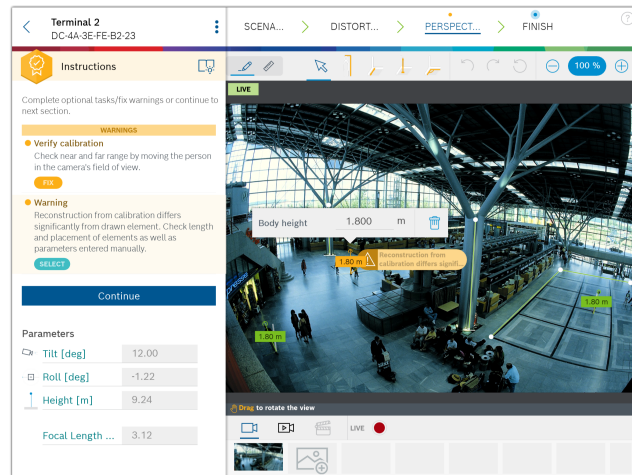


## Intuitive camera calibration

The camera calibration tool easily guides you through the calibration process with detailed step-by-step instructions in order to optimize the Video Analytics capabilities.

Based on live view, recordings, or snapshots, the camera calibration tool supports you in marking reference measurements in the scene.

The camera calibration process can be done directly online. Alternatively, recordings and snapshots can be stored and shared for offline calibration as well.



## Sharing of projects

Project files can be exported and transferred to associates via email or cloud service, for example in case another project team member is taking over from someone else. The most convenient way, however, is our Dropbox synchronization and sharing feature which allows multiple people to work on the same project simultaneously or to monitor real-time progress. Thus, easy collaboration and installation process monitoring is supported even for large sites.

## Reporting

The app allows you to easily generate reports and documentation of the status of projects. The reports contain relevant project and camera settings as well as snapshots of the camera's field of view.

## Parts included

Quantity	Component
1	Free of charge software

## Technical specifications

Operating system	The app works on phones, tablets, and laptops running:
------------------	--

### Represented by:

**Europe, Middle East, Africa:**  
Bosch Security Systems B.V.  
P.O. Box 80002  
5600 JB Eindhoven, The Netherlands  
Phone: + 31 40 2577 284  
emea.securitysystems@bosch.com  
emea.boschsecurity.com

**Germany:**  
Bosch Sicherheitssysteme GmbH  
Robert-Bosch-Ring 5  
85630 Grasbrunn  
Germany  
www.boschsecurity.com

**North America:**  
Bosch Security Systems, LLC  
130 Perinton Parkway  
Fairport, New York, 14450, USA  
Phone: +1 800 289 0096  
Fax: +1 585 223 9180  
onlinehelp@us.bosch.com  
www.boschsecurity.us

**Asia-Pacific:**  
Robert Bosch (SEA) Pte Ltd, Security Systems  
11 Bishan Street 21  
Singapore 573943  
Phone: +65 6571 2808  
Fax: +65 6571 2699  
apr.securitysystems@bosch.com  
www.boschsecurity.asia

- Android 9.0 or higher with OpenGL ES 3.0 or higher
- iOS 13 or higher
- Windows 10.1607 "Anniversary Update" (64-bit) or higher

### Network connection

An internet connection is required for additional features like automatic update check and Dropbox sharing.



### Notice

#### Minimum window size for the calibration tool

The calibration tool requires a minimum window size of 1024 x 700 points to ensure a seamless user experience. It will be unavailable if this requirement is not met.

On standard resolution monitors, 1024 x 700 points amounts to 1024 x 700 pixels, whereas on high DPI monitors (such as mobile devices) the physical display resolution is divided by the display-scaling factor (e.g. a tablet with a display resolution of 2048 x 1536 pixels and a scaling factor of 2 will result in 1024 x 768 points, thus supporting the app).

## Ordering information

### MFT-PA Project Assistant

App for initial installation, basic configuration and easy calibration of IP cameras.

Order number **MFT-PA | F.01U.360.106**