

DCN-SW-E Main module software license

www.boschsecurity.com



BOSCH

Invented for life



- ▶ Meeting & Agenda
- ▶ User management
- ▶ Client server solution
- ▶ Optimized for Microsoft Windows 8.1 and 10
- ▶ Off-line configuration

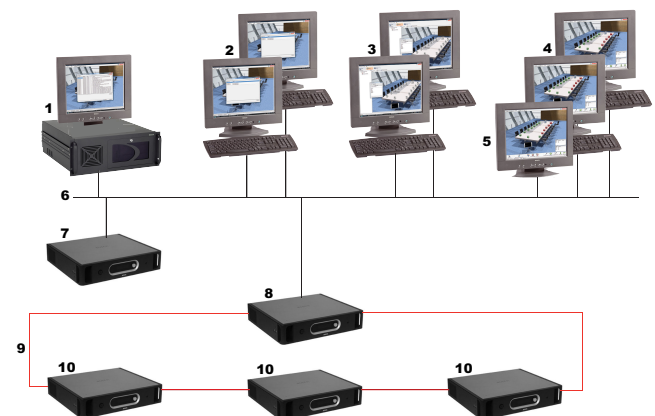
The DCN-SW-E Main module software license is used as a platform on which all other software modules run. Basic functions are included where others can be added depending on the functionality required.

System overview

The DCN-SW-E Main module software license is built as a client server solution and consists of four software components:

- The server provides management, control and monitoring of the DCN Next Generation System or DCN Wireless Discussion system.
- The configuration application provides system installation and meeting preparation.
- The operator application provides system monitoring and meeting control.
- The print application provides printing of voting results.

All DCN-SW-E applications can, but not necessarily need to be run on separate computers and integrate seamlessly with each other. This allows the possibility for assigning functionality to different users and/or PCs - for instance, let one or more users configure the set-up and register delegates (configuration application), and another person actually control the meeting on a separate pc (operator application). Contextual help file provides instant support for all applications.



1	DCN-SW-E Server
2	Vote results print application
3	Remote Configuration application
4	Remote Operator application (Multi PC license required)
5	Touch screen
6	Ethernet connections
7	CCU2 (single)
8	CCU2 (master)

9 Bosch optical network

1 CCU2 (slave)

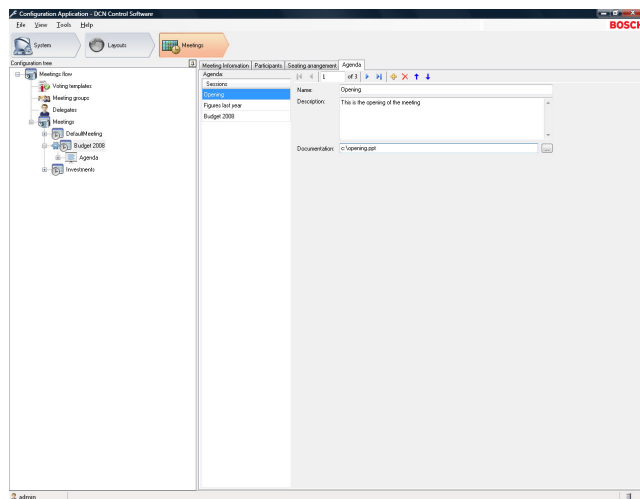
0

Functions

The server

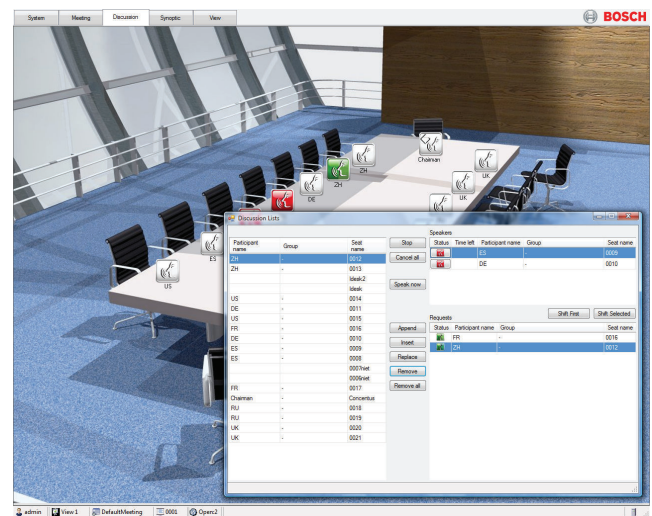
- Monitor and control of the conference data.
- It runs on the background and links all applications.
- SQL database stores all data and settings.
- Status report of database connection and system connection.
- Error logging for quick diagnostics.

Configuration application



- Easy step-by-step pre-configuration which makes it exceptionally ergonomic.
- Off-line system configuration.
- Administrator user management: defining users and user groups with group privileges like view- and control rights.
- Installer system setup: defining seats and synoptic layouts.
- Operator meeting preparation: voting templates, participating delegates, authorizations for each meeting, the agenda, lists of speakers and voting scripts.

Operator application



- Full meeting control.
- Touch screen optimized.
- Ribbon technology giving the user a graphical representation of all main functions, which makes it very intuitive to use.
- Functionality depending on user rights and system license.
- Synoptic microphone control, voting results, Individual microphone sensitivity control, battery status and signal status.
- Ergonomically designed synoptic shapes and shadings help the color-impaired people to distinguish different statuses.
- Quick-links to jump instantaneously to configuration application to make adjustment to the pre-configuration.

Print application

- Automatic printing of voting results

Installation/configuration notes

License

DCN-SW-E is license activated and comes with an authorization code which includes synoptic control with basic microphone control functionality. Activation is done via the license website.

The configuration application can be used independent of the additional licenses as where the operator application does need the license to control the conference system.

Running the operator application on a separate PC requires DCN-SW-MPC-E.

Parts included

Quantity	Component
1	E-mail with license activation information

Technical specifications

Maximum number of client PCs	20
Supported operating system	Windows 8.1 Pro 32 or 64 bits (including .NET Framework 3.5 feature). or Windows 10 Pro 32 or 64 bits (including .NET Framework 3.5 feature). All with the latest service packs and updates.
Required open TCP port for client PCs	9461, 20000, 20001 and 20002
PC requirements	

Single CCU	Processor i5 4 cores 2.4 GHZ. • 8 GB RAM. • 20 GB free disk space. • 1 GB Ethernet card.
Multi CCU	Processor i5 4 cores 2.4 GHZ. • 8 GB RAM. • 20 GB free disk space. • 1 GB Ethernet card. for the server PC and client PC's.

Ordering information**DCN-SW-E Main module software license**

DCN Next Generation conference software main module, a platform for running all other Conference software modules, electronic authorization code.
Order number **DCN-SW-E**

Represented by:

Europe, Middle East, Africa:
Bosch Security Systems B.V.
P.O. Box 80002
5600 JB Eindhoven, The Netherlands
Phone: + 31 40 2577 284
emea.securitysystems@bosch.com
emea.boschsecurity.com

Germany:
Bosch Sicherheitssysteme GmbH
Robert-Bosch-Ring 5
85630 Grasbrunn
Germany
www.boschsecurity.com

North America:
Bosch Security Systems, Inc.
130 Perinton Parkway
Fairport, New York, 14450, USA
Phone: +1 800 289 0096
Fax: +1 585 223 9180
onlinehelp@us.bosch.com
www.boschsecurity.us

Asia-Pacific:
Robert Bosch (SEA) Pte Ltd, Security Systems
11 Bishan Street 21
Singapore 573943
Phone: +65 6571 2808
Fax: +65 6571 2699
apr.securitysystems@bosch.com
www.boschsecurity.asia