

DCN-NG Download and License Tool

DCN-DLT



BOSCH

Table of Contents

1	General introduction	4
2	User interface	5
2.1	Title bar	5
2.2	Menu File	5
2.3	Menu tools and icon bar	6
2.4	Menu Help	6
2.5	Content pane	6
2.6	Status bar	7
3	Installation of the software	8
3.1	Installing the software	8
3.1.1	Typical installation	10
3.1.2	Custom Installation	12
3.1.3	Complete Installation	14
3.2	Change, repair or remove the installation	15
3.2.1	Change installation	17
3.2.2	Repair installation	19
3.2.3	Remove installation	20
4	Configuration and operation	22
4.1	Setup the connection (options)	23
4.2	Download CCU	24
4.3	Download Optical Devices	26
4.4	Download Wireless Units	28
4.4.1	Download key to CCU	29
4.4.2	Download key and firmware to WDU	29
4.5	Download Concentus Font	31
4.5.1	Download fonts to the Concentus units	33
4.6	Languages	35
4.7	Enter License Key	37
4.8	Preset External Contact	39
4.9	Preset Individual Channels	40

1 General introduction

Version 4.0, 2011-10-04

The Bosch Download and License Tool is used to download:

- Software to Central Control Units.
- The license key to the Central Control Units.
- Software to devices which are connected to the optical network:
 - Wireless Access Point, Audio Expanders, Cobranet Interfaces and Integrus Transmitters.
- Software and encryption key to wireless delegate units (WDU).
- Encryption key to the Central Control Units (for the WAP).
- Fonts to the Concentus units with graphical displays.
- Settings of selected active languages of a Central Control Unit.
- Settings of the external contact.
- Individual channel configuration.

Operating systems

The Bosch Download and License Tool can be used on Windows 7 Home Premium (32 and 64 bits) or above or Windows Vista Home Premium (32 or 64 bits) or above. All with the latest service packs and updates.



NOTICE!

The Bosch Download and License Tool can be used from DCN system version 4.0 onwards.

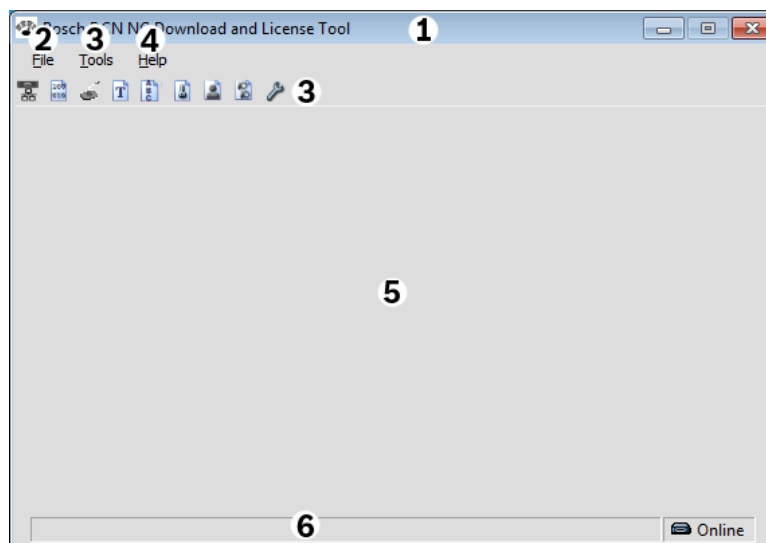
Copyright

Copyright (c) 2011 Robert Bosch GmbH. All rights reserved.

No part of this document may be reproduced or transmitted in any form by any means, electronic, mechanical, photocopying, recording or otherwise, without the prior written permission of the publisher. For information on getting permission for reprints and excerpts, contact Bosch Security Systems B.V.

2 User interface

The Bosch Download and License Tool is a Microsoft .Net based application. The user interface contains of a title bar, a status bar, a content pane a menu bar and icon bar (to select the different download functions).



1	Section 2.1 Title bar
2	Section 2.2 Menu File
3	Section 2.3 Menu tools and icon bar
4	Section 2.4 Menu Help
5	Section 2.5 Content pane
6	Section 2.6 Status bar

2.1 Title bar

The title bar consist of the DCN product logo, name and three buttons:

- Minimise window.
- Maximise window.
- Close (x). Exits the application.



NOTICE!

The close button is disabled when one of the menu tools or icon bar items is selected/activated.










2.2 Menu File

The menu File has the following option:

Exit (Alt + F4) Exits the application.

2.3 Menu tools and icon bar

The menu tools and icon bar represents both the same functionality and are divided into the following options:

	Download CCU	Download software to the Central Control Unit (CCU). Refer to <i>Section 4.2 Download CCU</i>
	Download Optical Devices	Download the optical devices connected to the CCU. Refer to <i>Section 4.3 Download Optical Devices</i> .
	Download Wireless Units	Download software and encryption key to the wireless delegate units and set the CCU encryption key. Refer to <i>Section 4.4 Download Wireless Units</i> .
	Download Concentus Font	Download the system font to units with a graphical display connected to the CCU. Refer to <i>Section 4.5 Download Concentus Font</i> .
	Languages	Shows the language selection dialog to set the system languages. Refer to <i>Section 4.6 Languages</i> .
	Enter License key	Shows the dialog used to enter the license key on the CCU. Refer to <i>Section 4.7 Enter License Key</i> .
	External Contact Setting	Shows the external contact setting dialog. Refer to <i>Section 4.8 Preset External Contact</i> .
	Individual Channels	Shows the individual channels assignment dialog. Refer to <i>Section 4.9 Preset Individual Channels</i> .
	Options	Shows the options dialog. Refer to <i>Section 4.1 Setup the connection (options)</i> .

2.4 Menu Help

Displays the help file (search, contents or index tab) and the about dialog.



2.5 Content pane

Displays the download process. The content pane is empty at startup of the software and when no download process is active.

2.6

Status bar

Displays the connection status to a Central Control Unit by means of an icon and description:

Icon	Description
	The connection to the CCU is established. Refer to <i>Section 4.1 Setup the connection (options)</i> .
	No connection with the CCU. The Bosch Download and License Tool is attempting to connect. Refer to <i>Section 4.1 Setup the connection (options)</i> .



CAUTION!

When a connection is established with the CCU which runs in **slave mode**, or in **single mode**, the Bosch Download and License Tool shows the "**connection to the CCU is established**" icon (since it is online) and will show the text message "**Unplug optical network cables before downloading the CCU**" in the status bar.

3 Installation of the software

These instructions explain how to install the Bosch Download and License Tool onto your PC.

The Bosch Download and License Tool software can be found on the DCN system DVD-ROM which comes with the Bosch Conference Software Suite DCN-SW, DCN-CCU2, DCN-CCUB2, DCN-SWSMV, DCN-MR and INT-TX** products.

- Section 3.1 *Installing the software*
- Section 3.2 *Change, repair or remove the installation*

3.1 Installing the software

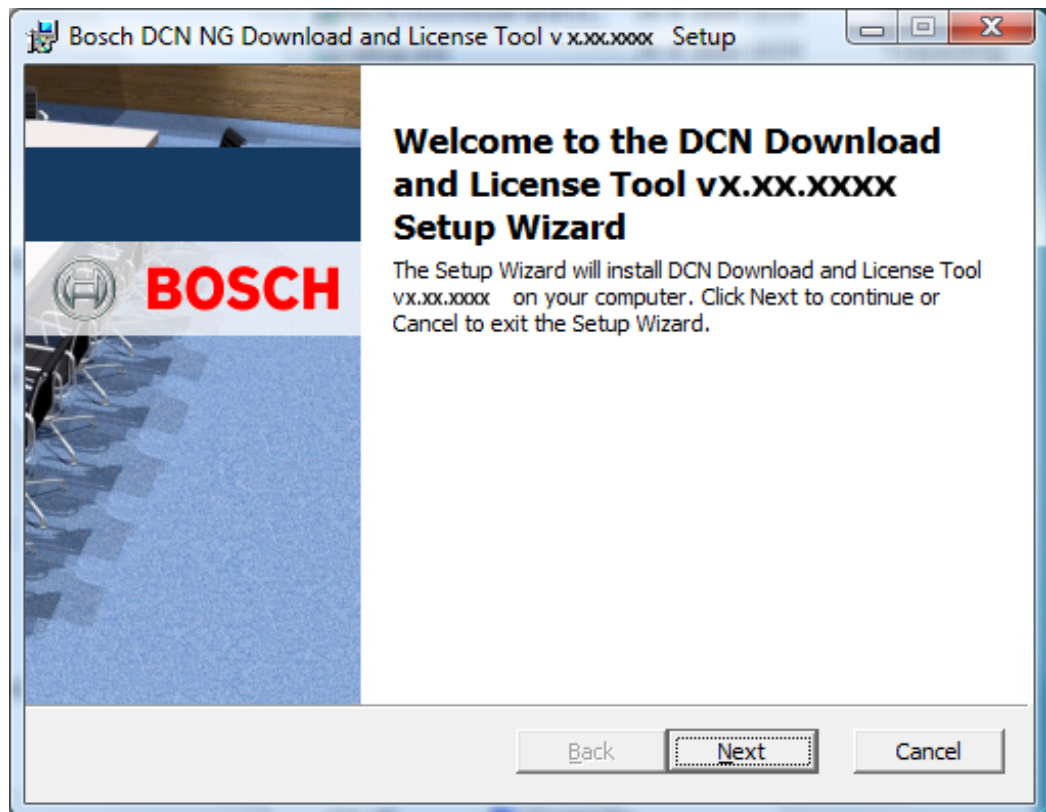
The Bosch Download and License Tool can be installed on Windows 7 Home Premium (32 and 64 bits) or above or Windows Vista Home Premium (32 or 64 bits) or above. All with the latest service packs and updates.



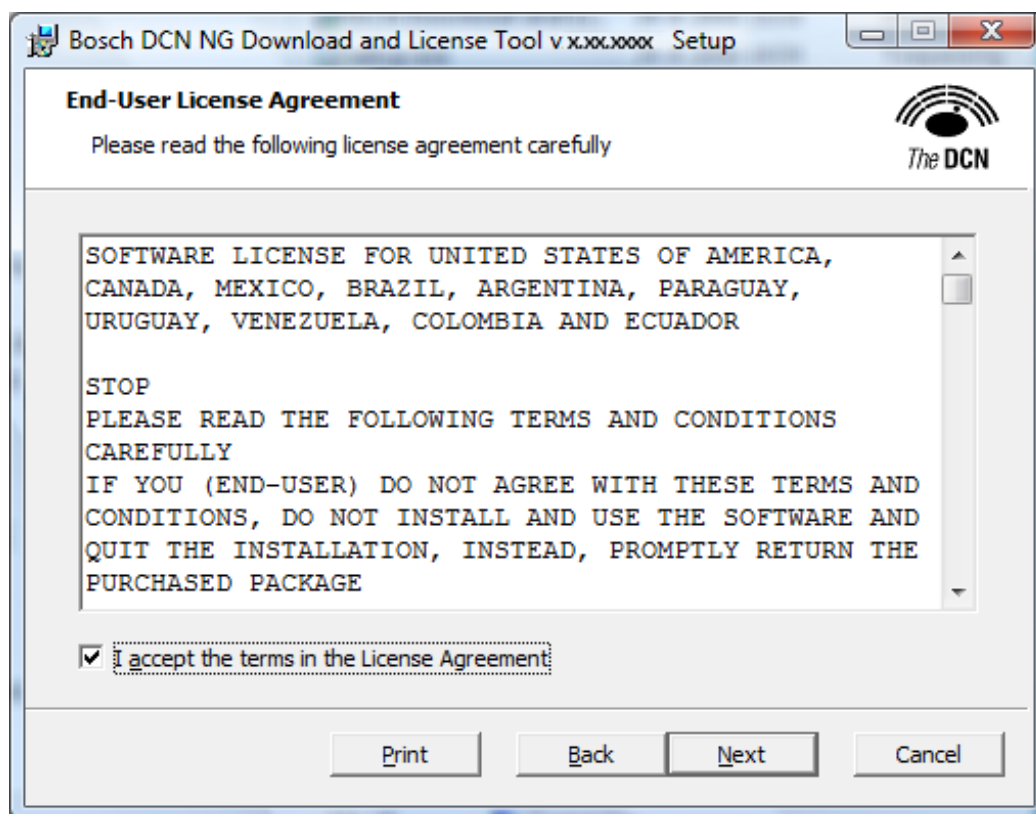
NOTICE!

- Use a user account with full Windows administration rights, before starting software installation.
- It is recommended to read the release notes before you continue the installation of the Bosch Download and License Tool.

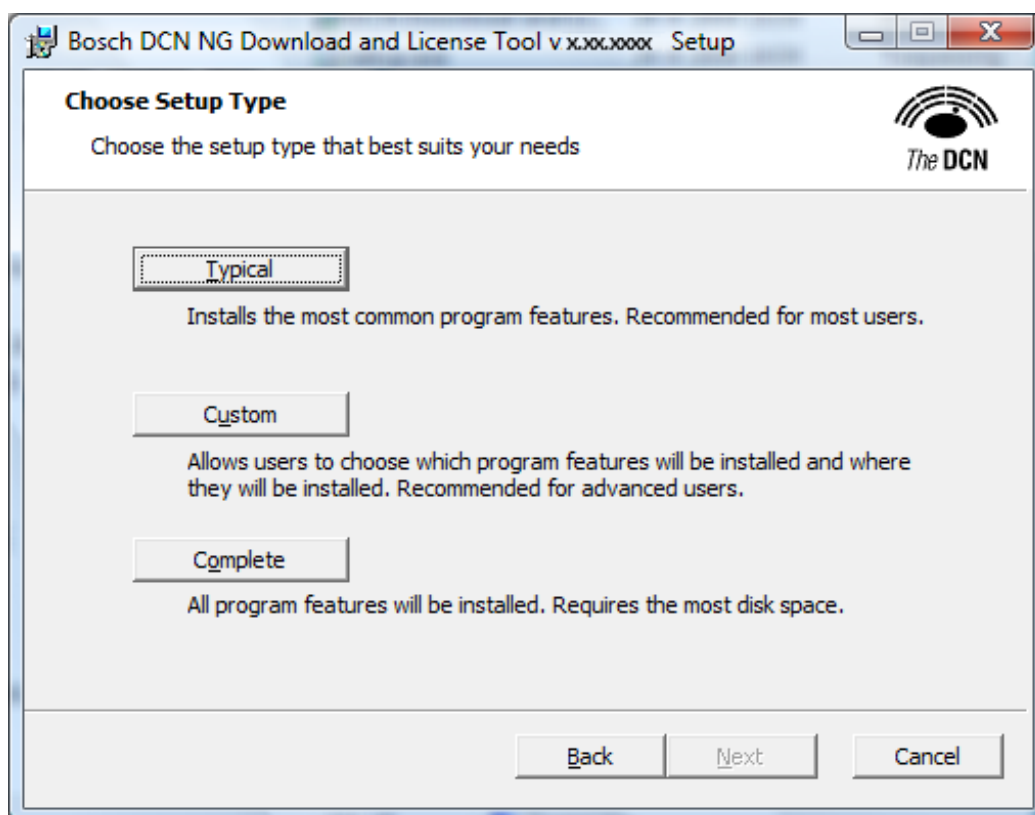
1. Click the **Installation link** on the DVD to start the installation process.
 - The following window appears:



Click **Next** to continue.



Select **I accept.....** and click **Next** to continue.



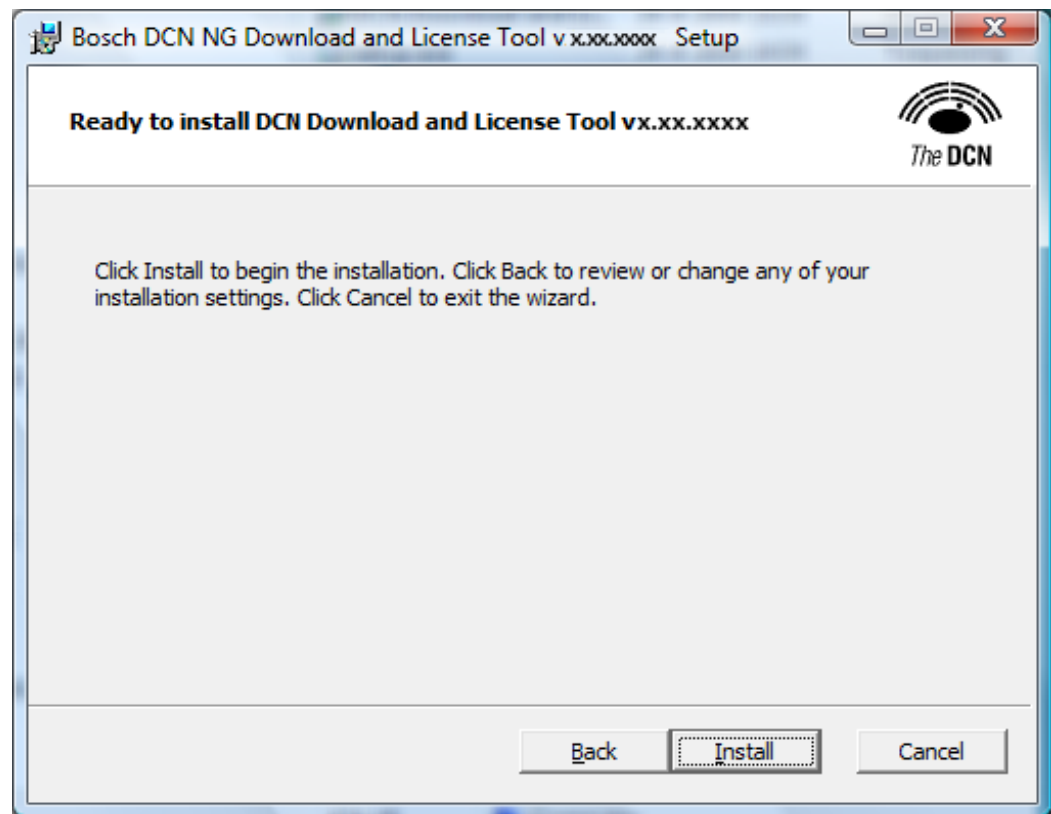
The type of setup can be chosen. Make your choice to continue the installation process.

- Click *Section 3.1.1 Typical installation* to start the typical installation.

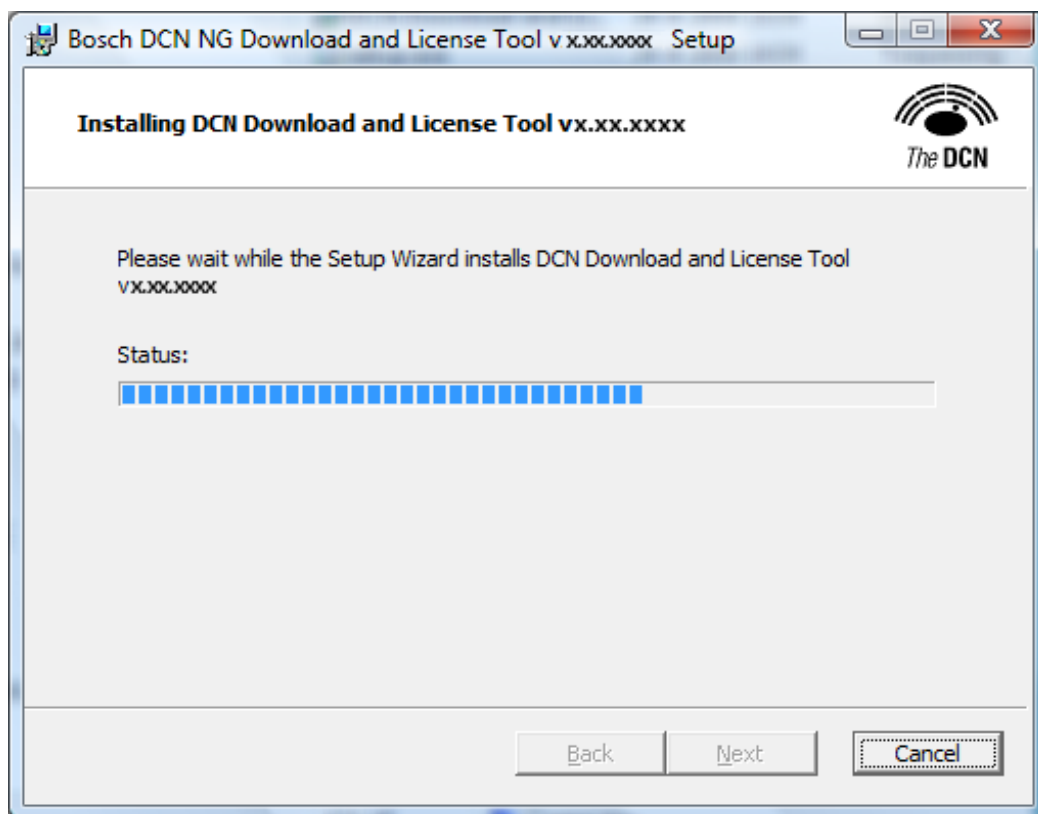
- Click *Section 3.1.2 Custom Installation* to start the custom installation.
- Click *Section 3.1.3 Complete Installation* to start the complete installation.

3.1.1

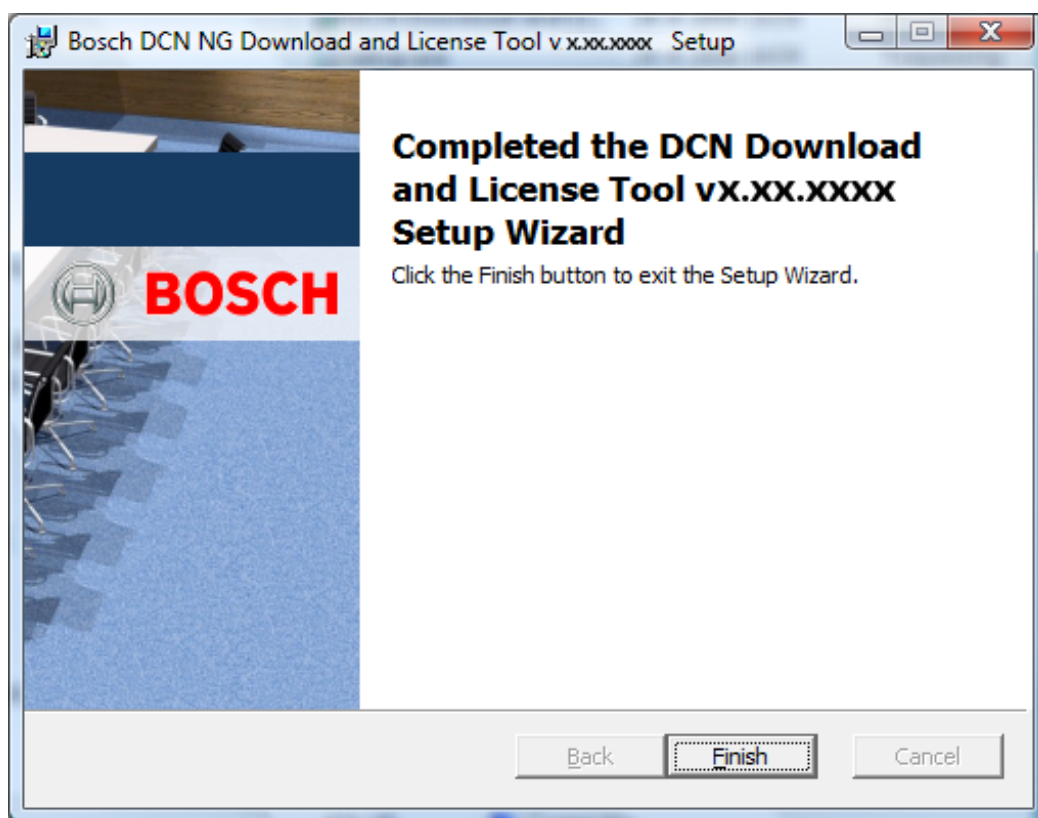
Typical installation



Click **Install** to continue the typical installation, or **Back** to return to the type of setup window. The following window appears when the **Install** button is clicked:

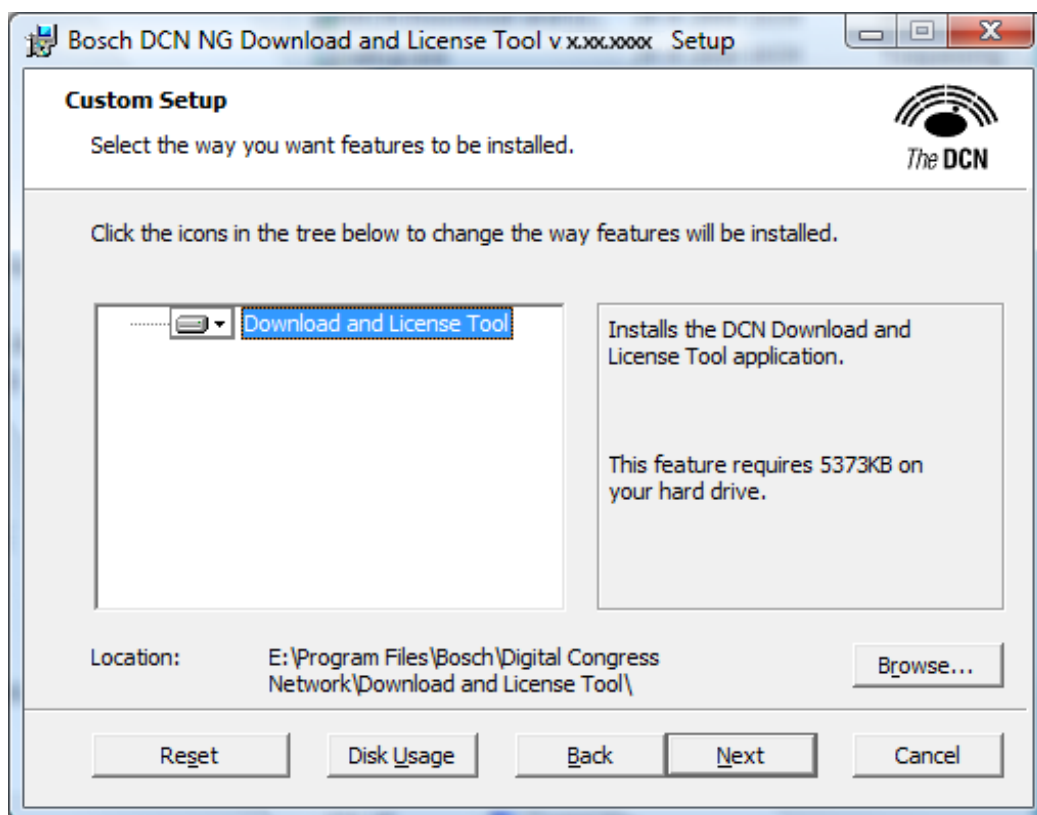


After the installation is completed, the following window appears:

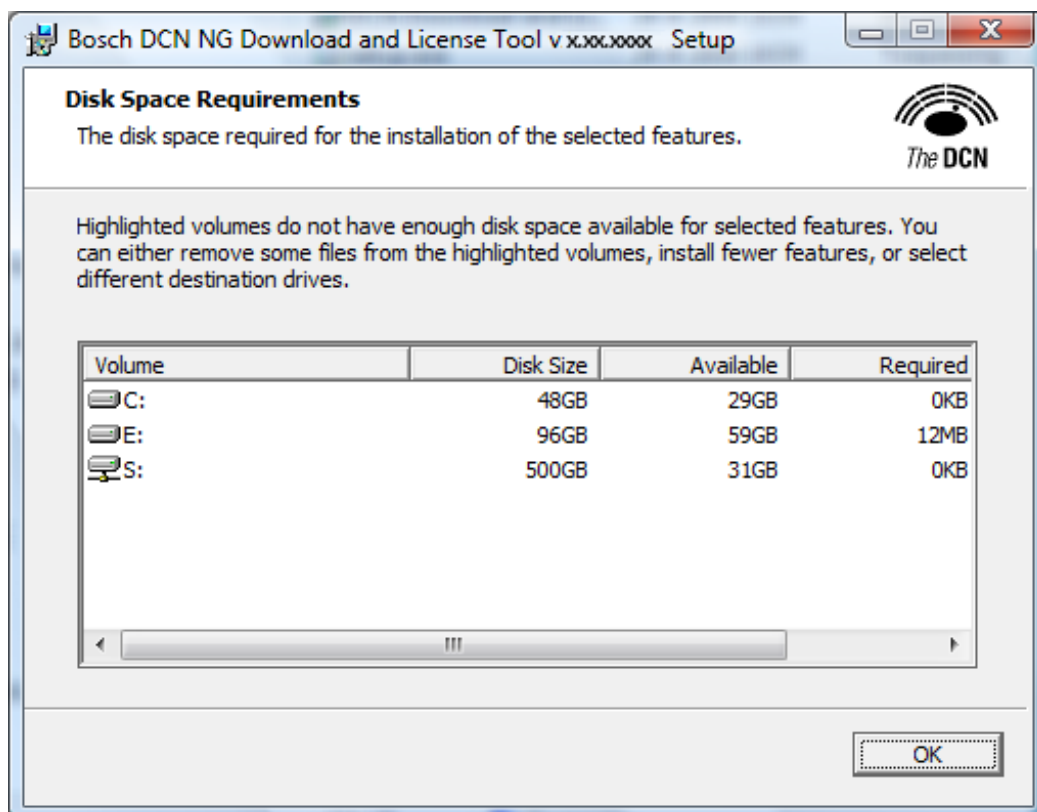


Click the **Finish** button to complete the installation process.

3.1.2 Custom Installation

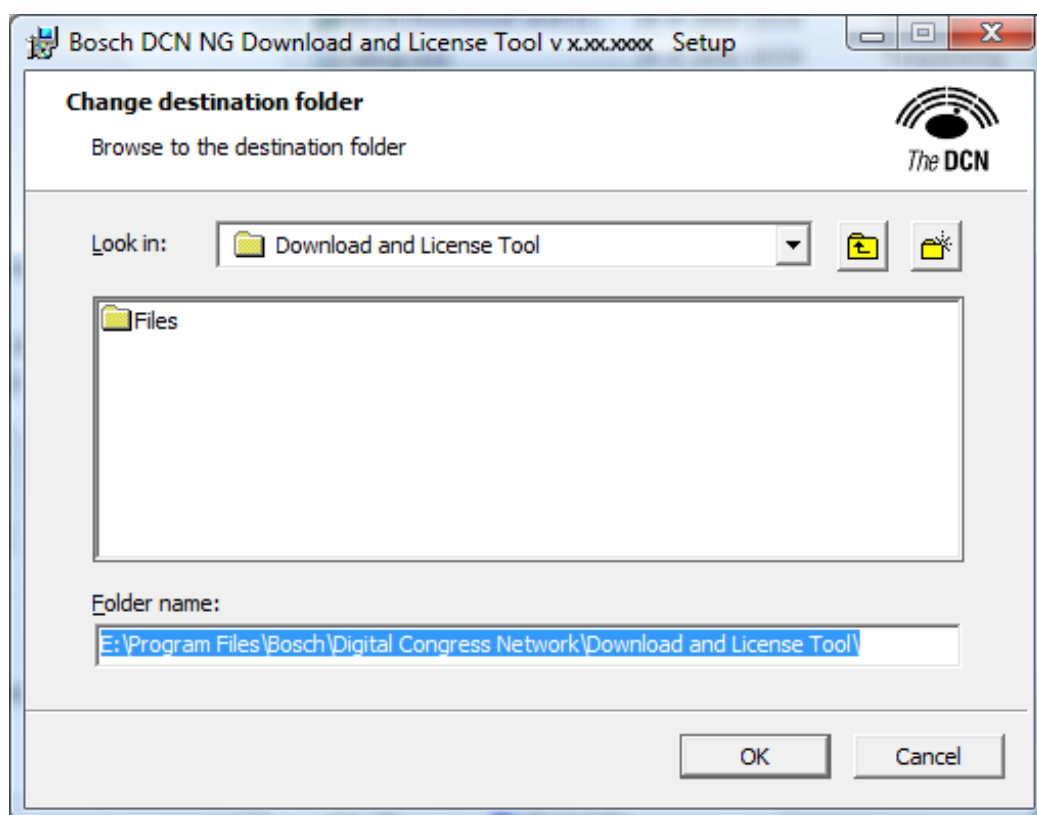


Click **Disk Usage** to check the available disks.



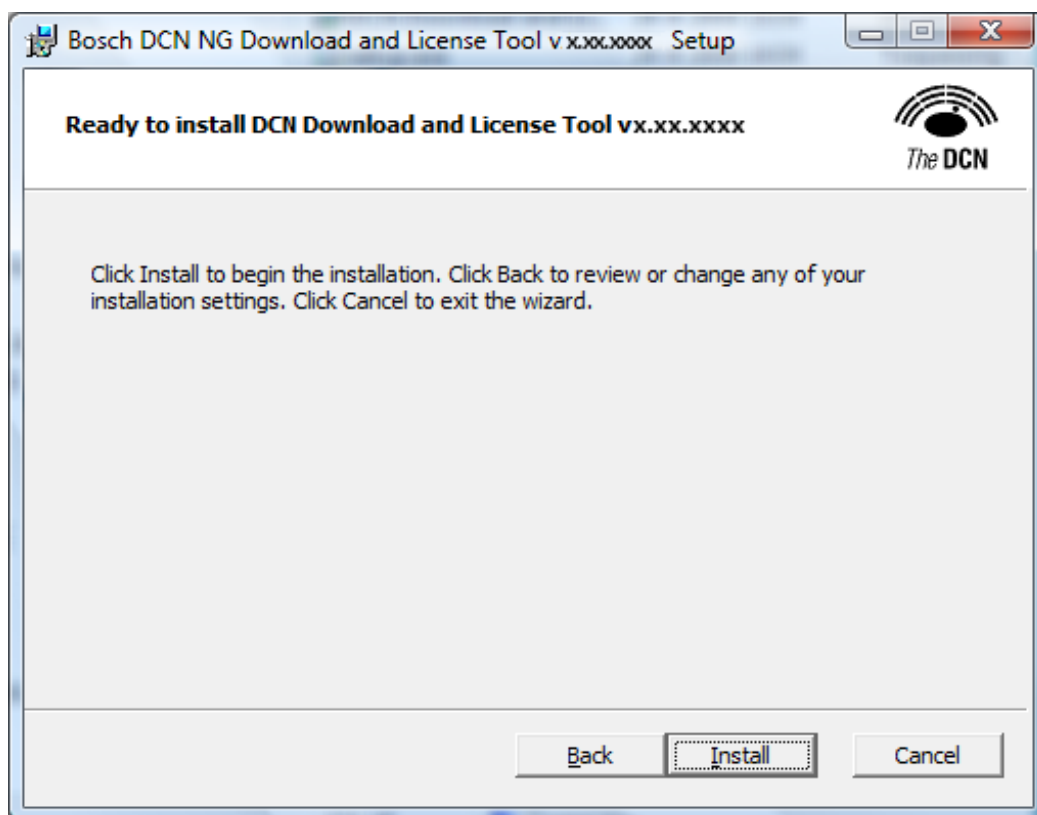
Select the disk and click **OK** to continue.

Click **Browse...** to change the installation folder.



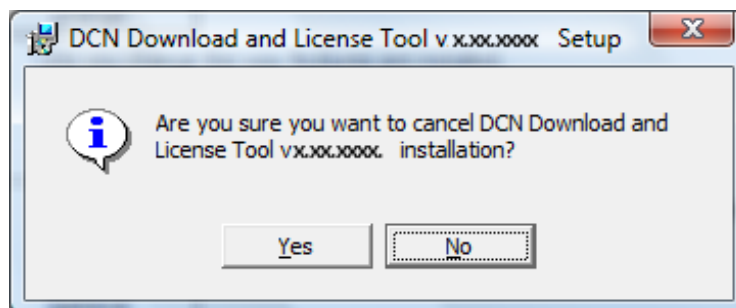
Click **OK** to continue with the new folder. Click **Cancel** to keep the previous folder.

3.1.3 Complete Installation



Click **Install** to continue with the complete installation or, click **Back** to return to the setup type window.

The following window appears when **Cancel** is clicked:

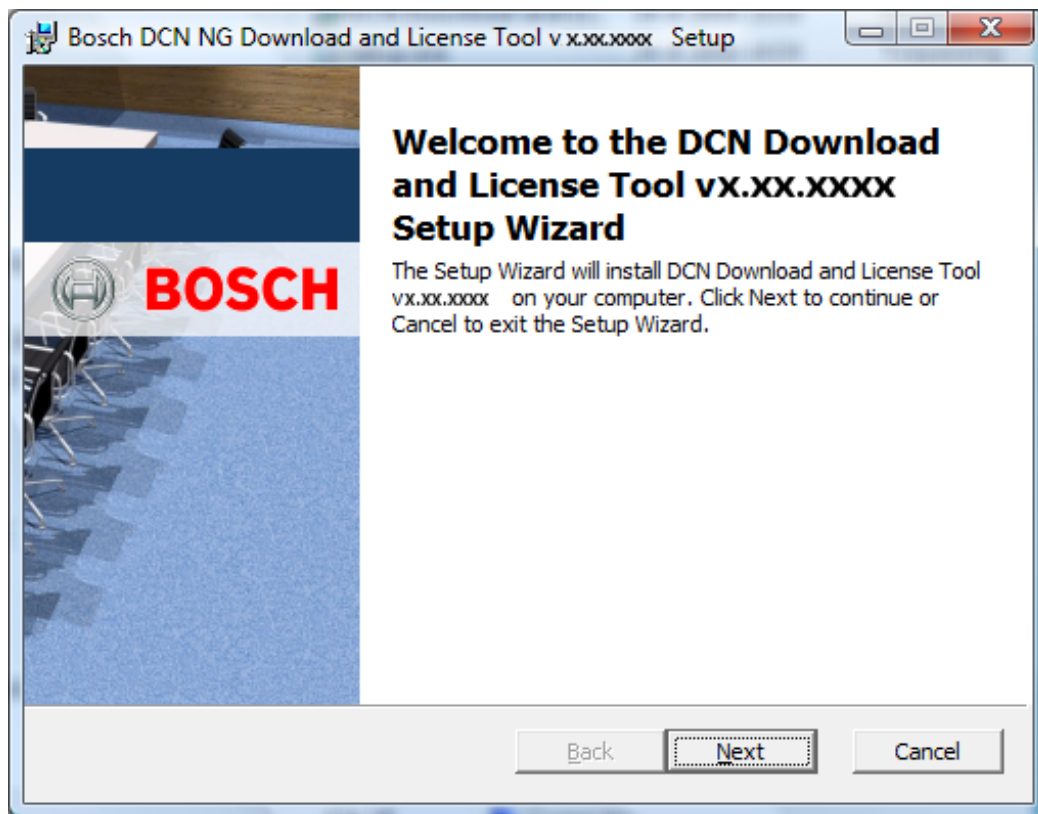


Click **Yes** to cancel the installation. Click **No** to continue the installation process.

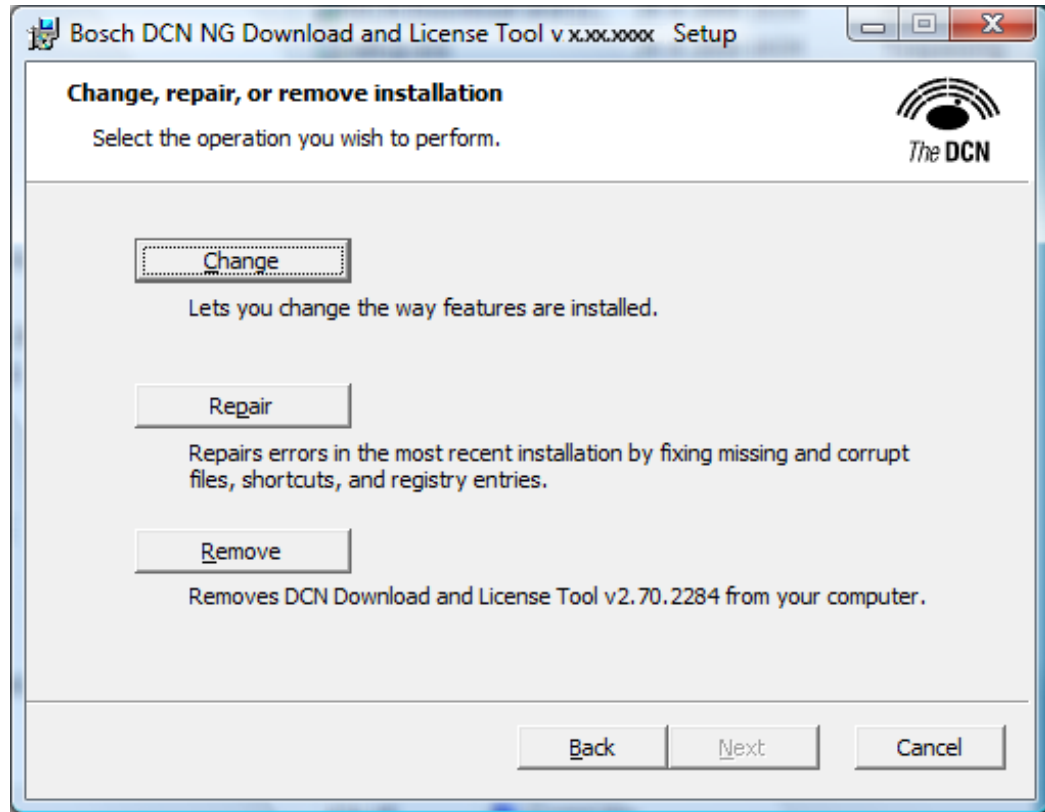
3.2

Change, repair or remove the installation

1. Click the **installation link** from the DVD to change, repair or remove the installation of the Bosch Download and License Tool.
 - The following window appears:

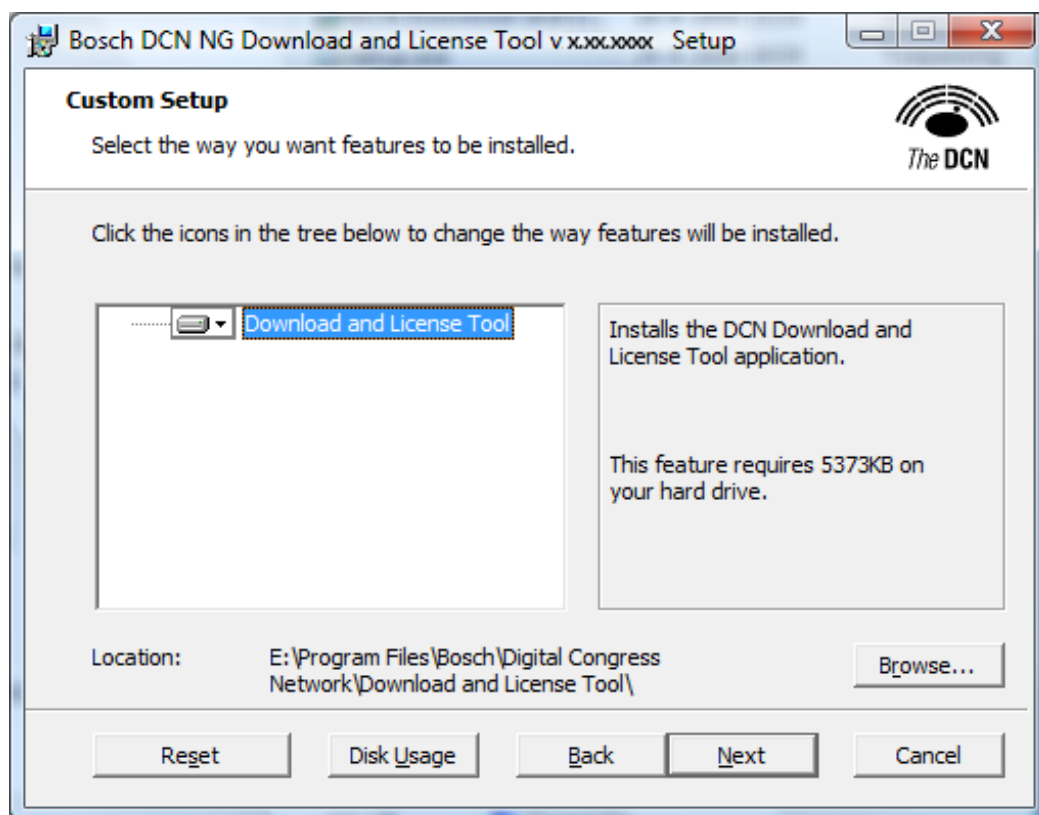


Click **Next** to continue.

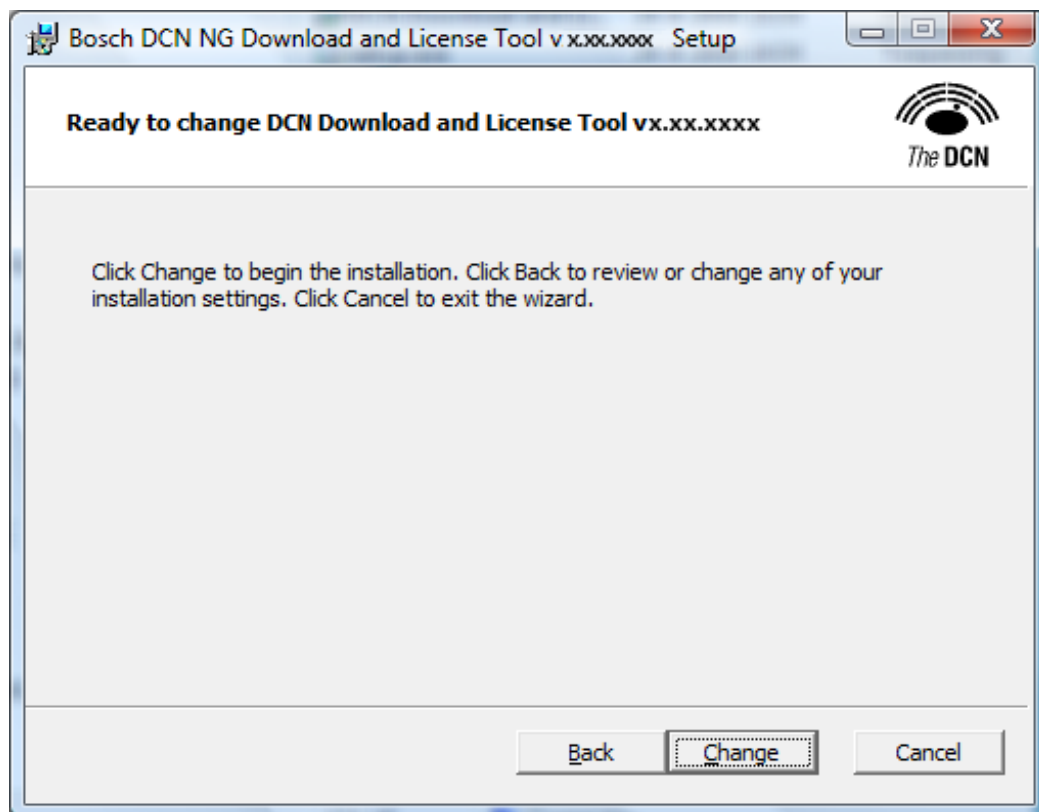


- Click *Section 3.2.1 Change installation* to change the installation.
- Click *Section 3.2.2 Repair installation* to repair the installation.
- Click *Section 3.2.3 Remove installation* to remove the installation.

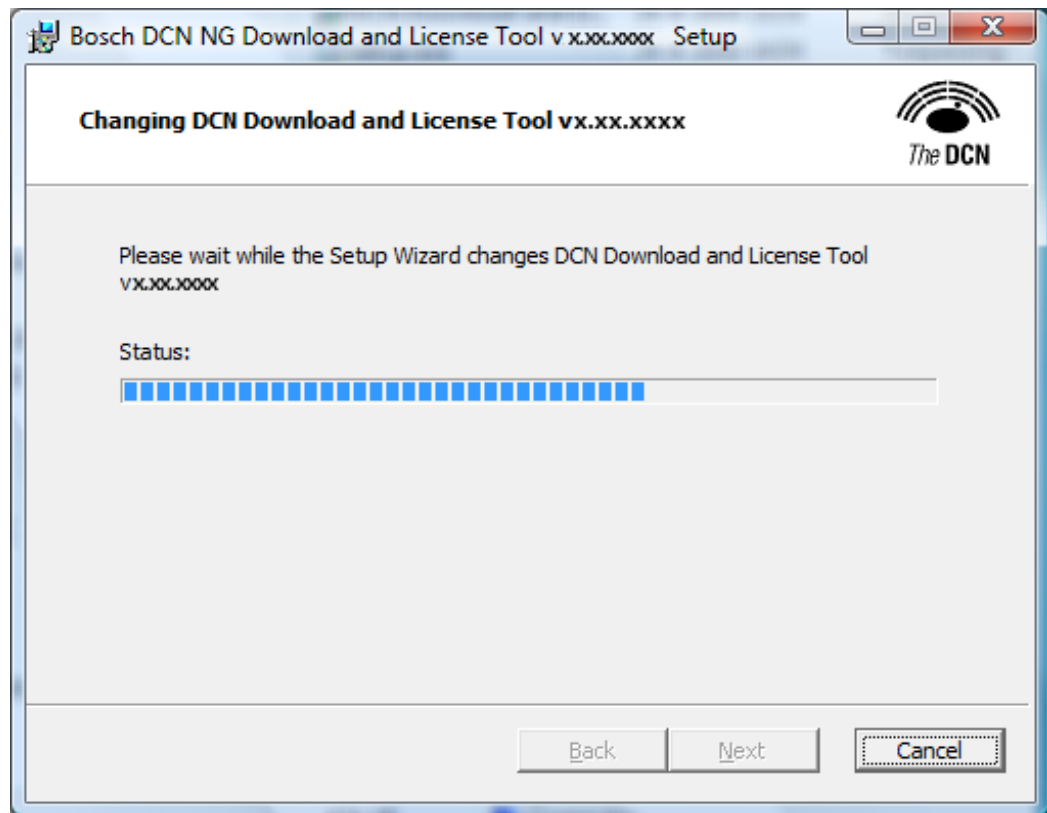
3.2.1 Change installation



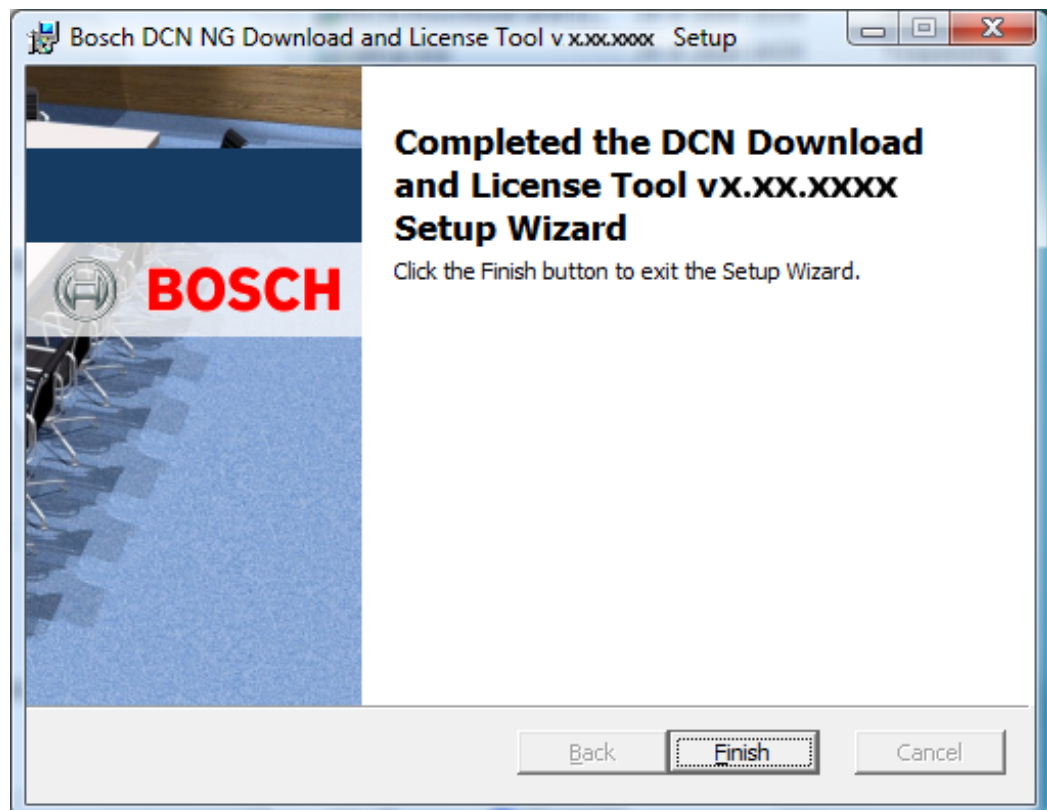
The following window appears when click the **Next** button:



The following window appears when click the **Change** button:

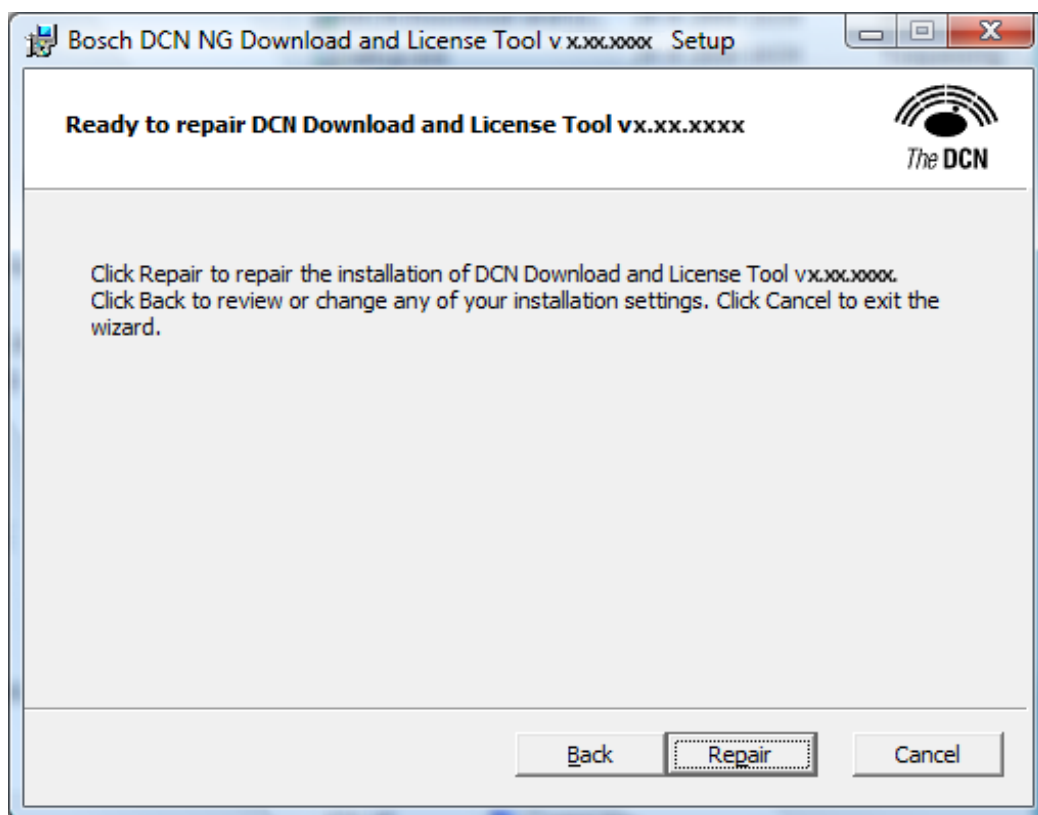


The following window appears, after the installation is completed:

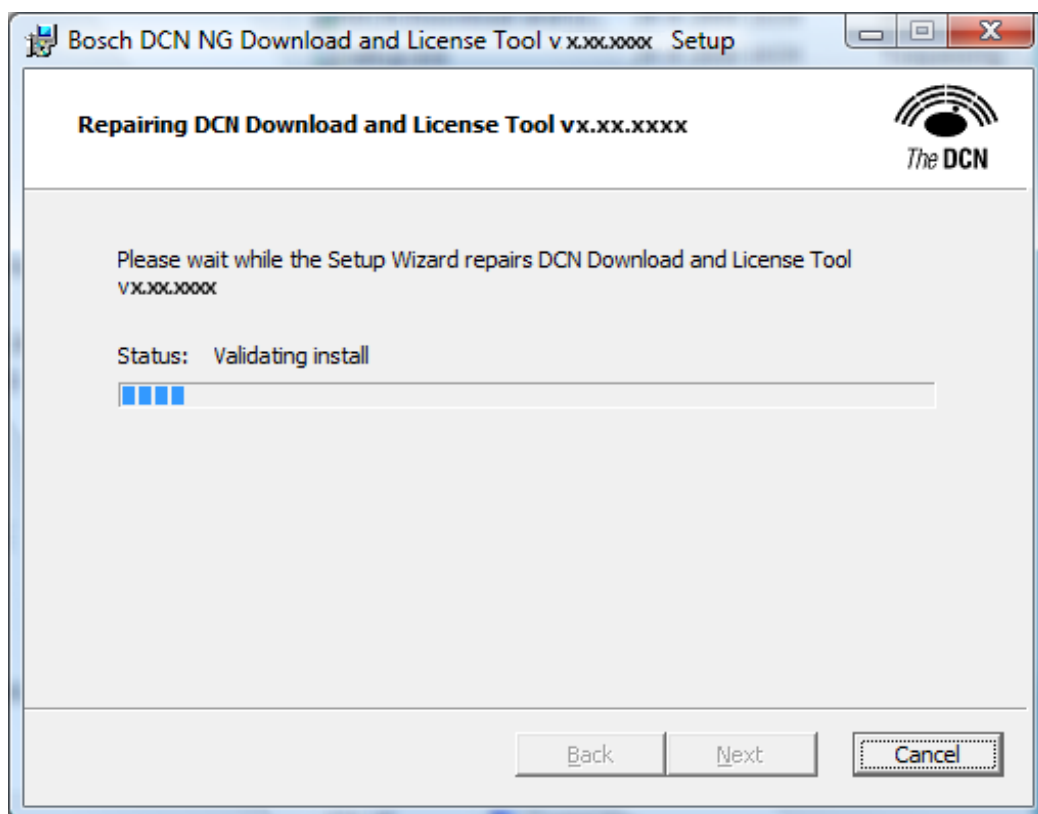


Click **Finish** to complete the installation process.

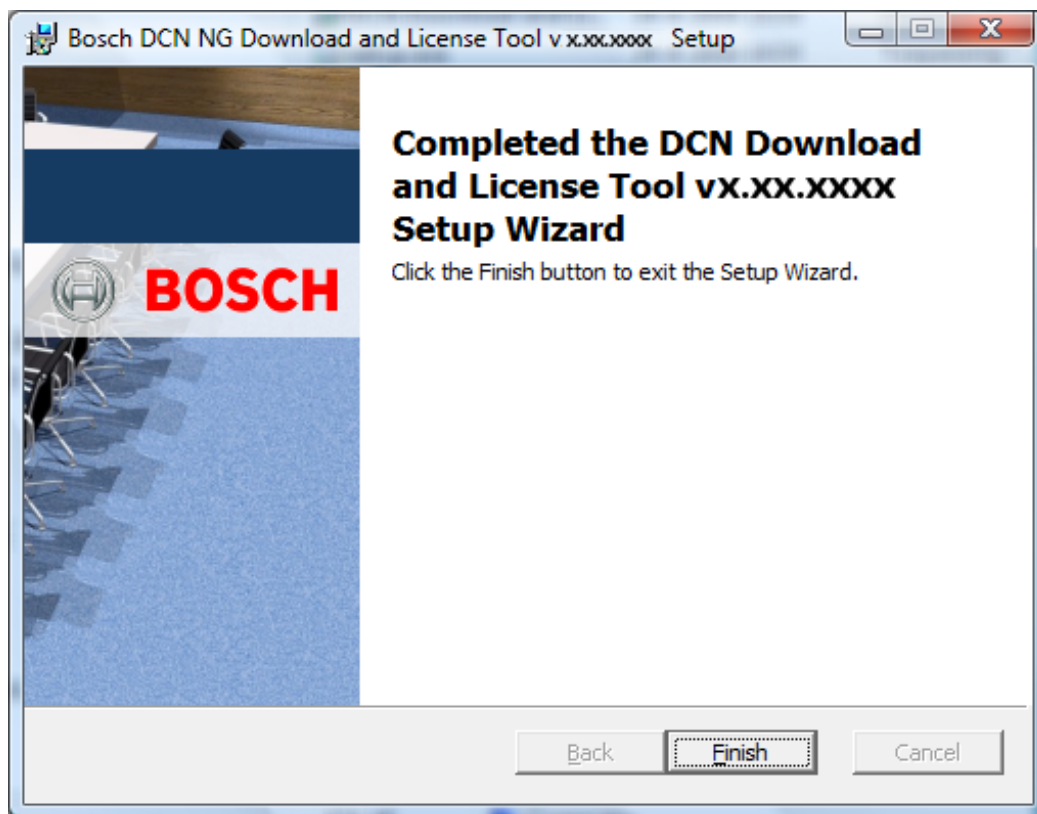
3.2.2 Repair installation



The following window appears when click the **Repair** button:



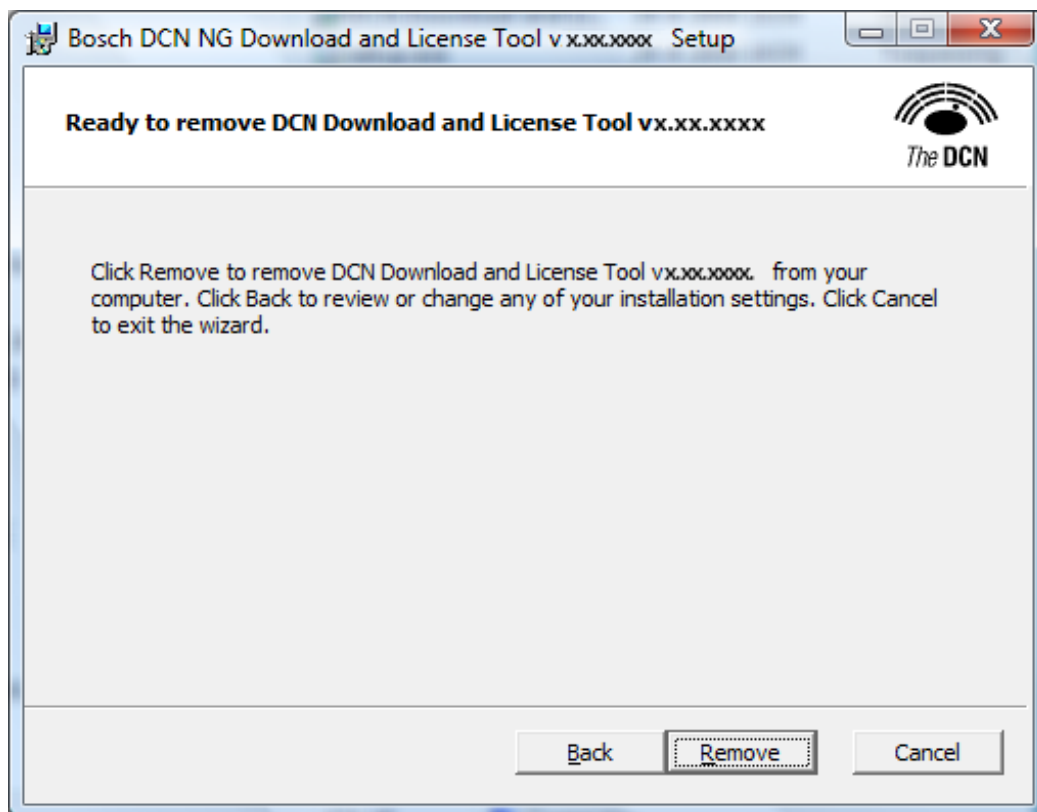
The following window appears, after the installation is completed:



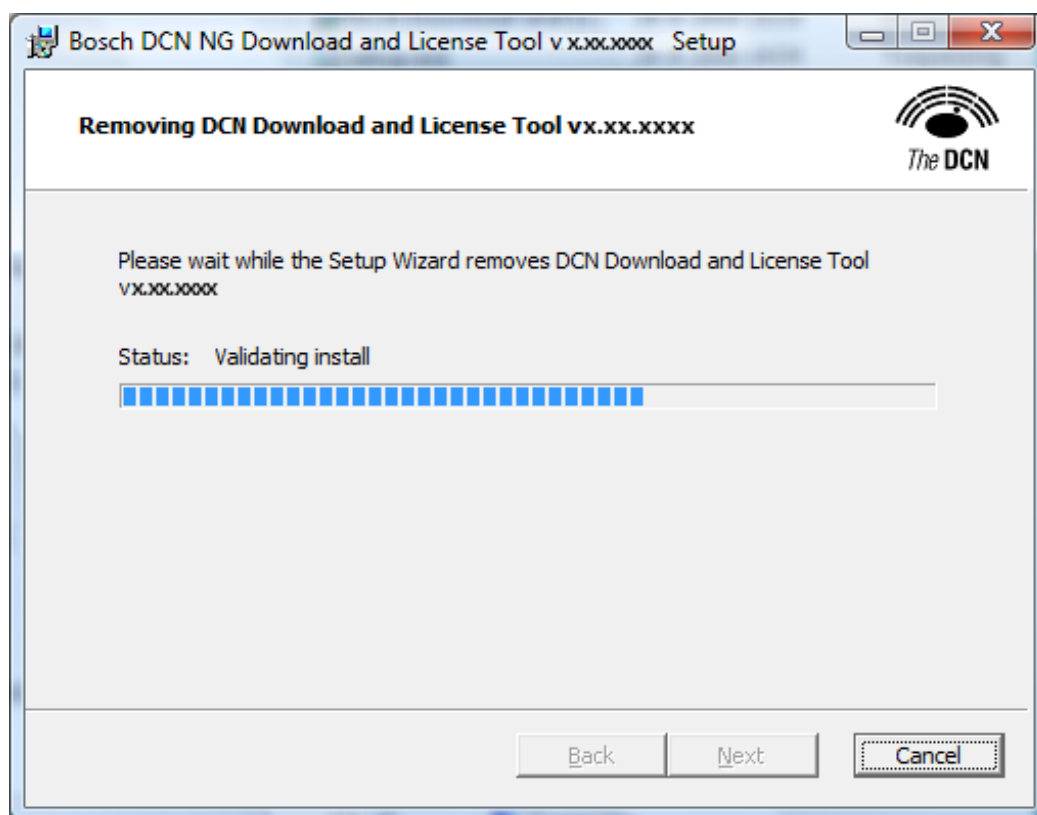
Click **Finish** to complete the installation process.

3.2.3

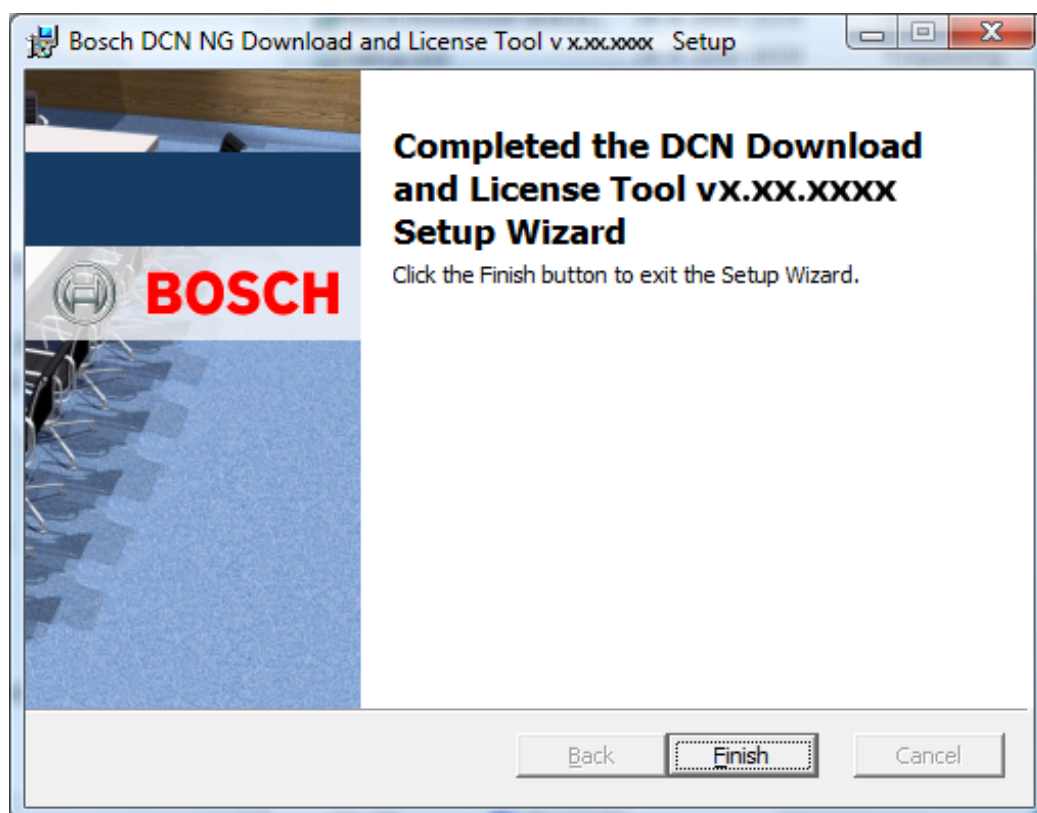
Remove installation



The following window appears when the **Remove** button is clicked.



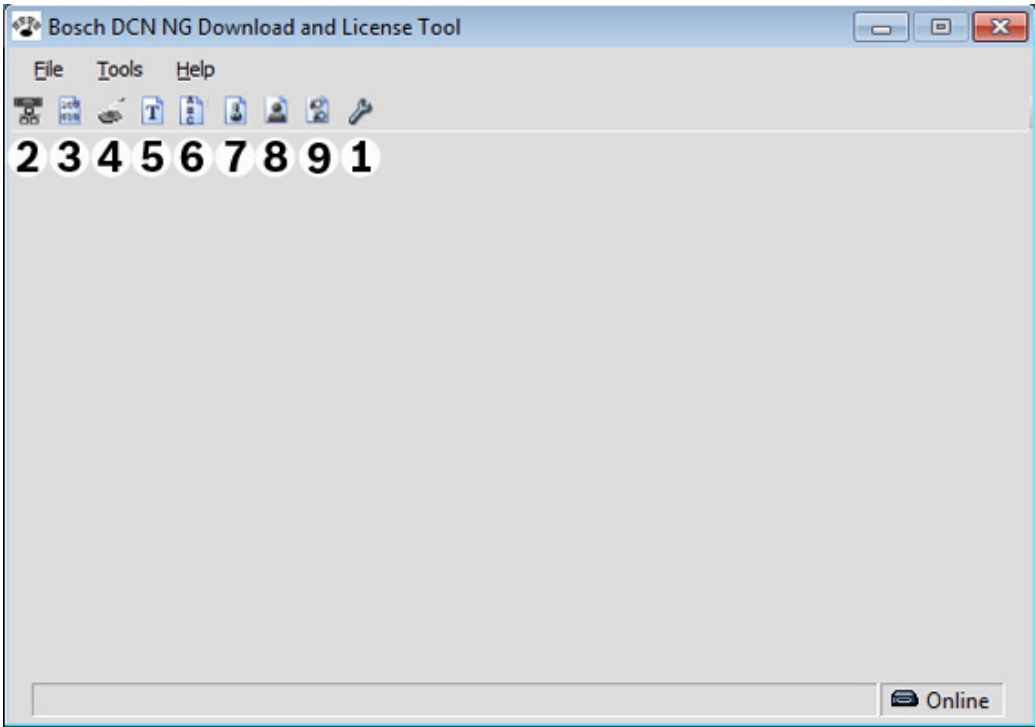
The following window appears after the de-installation is completed.



Click **Finish** to complete the de-installation process.

4 Configuration and operation

These instructions explain how to configure and operate the Bosch Download and License Tool.



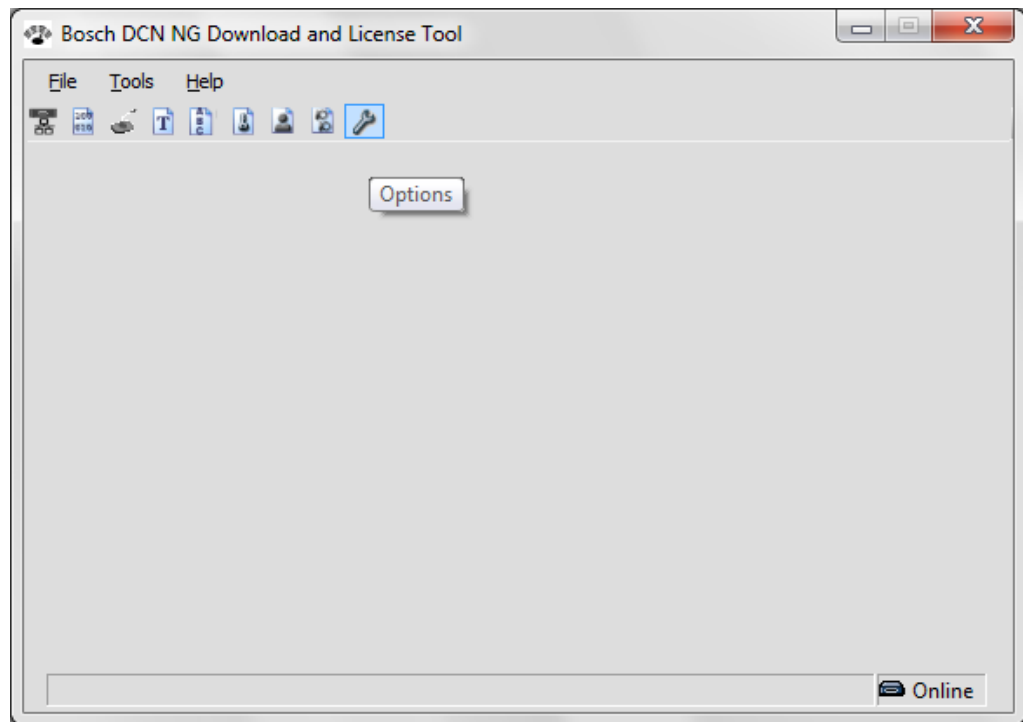
The menu **Tools** and **Icon** bar are both used to:

1	Section 4.1 Setup the connection (options)
2	Section 4.2 Download CCU
3	Section 4.3 Download Optical Devices
4	Section 4.4 Download Wireless Units
5	Section 4.5 Download Concentus Font
6	Section 4.6 Languages
7	Section 4.7 Enter License Key
8	Section 4.8 Preset External Contact
9	Section 4.9 Preset Individual Channels

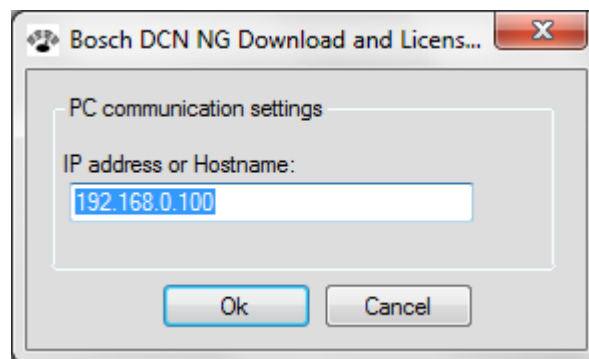
4.1 Setup the connection (options)

Firstly the connection with the Central Control Unit (CCU) must be configured:

1. Connect the CCU to the PC.
2. Start the Bosch Download and License Tool application.
3. Select **Tools** -> **Options** from the menu bar or click the **Options** button in the icon bar as shown:



The following window appears:



4. Enter the valid **IP address** of the CCU or **hostname**.
5. Click **OK** to accept the settings and to establish the connection between the PC and CCU. Or, click **Cancel** to discard the changes and keep the previous settings.
 - Refer to *Section 2.6 Status bar* for connection status.

4.2 Download CCU



CAUTION!

When a connection is established with the CCU which runs in **slave mode**, or in **single mode**, the Bosch Download and License Tool shows the "**connection to the CCU is established**" icon (since it is online) and will show the text message "**Unplug optical network cables before downloading the CCU**" in the status bar. Refer to *Section 2.6 Status bar*.



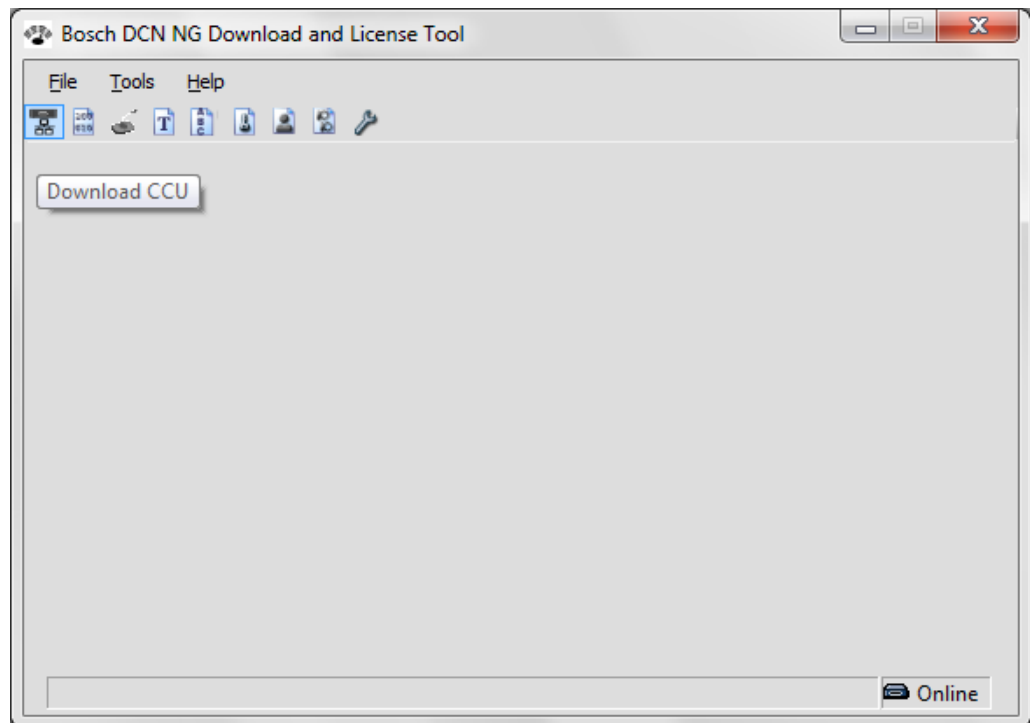
NOTICE!

The **Download CCU** function is enabled when the following 4 conditions are met:

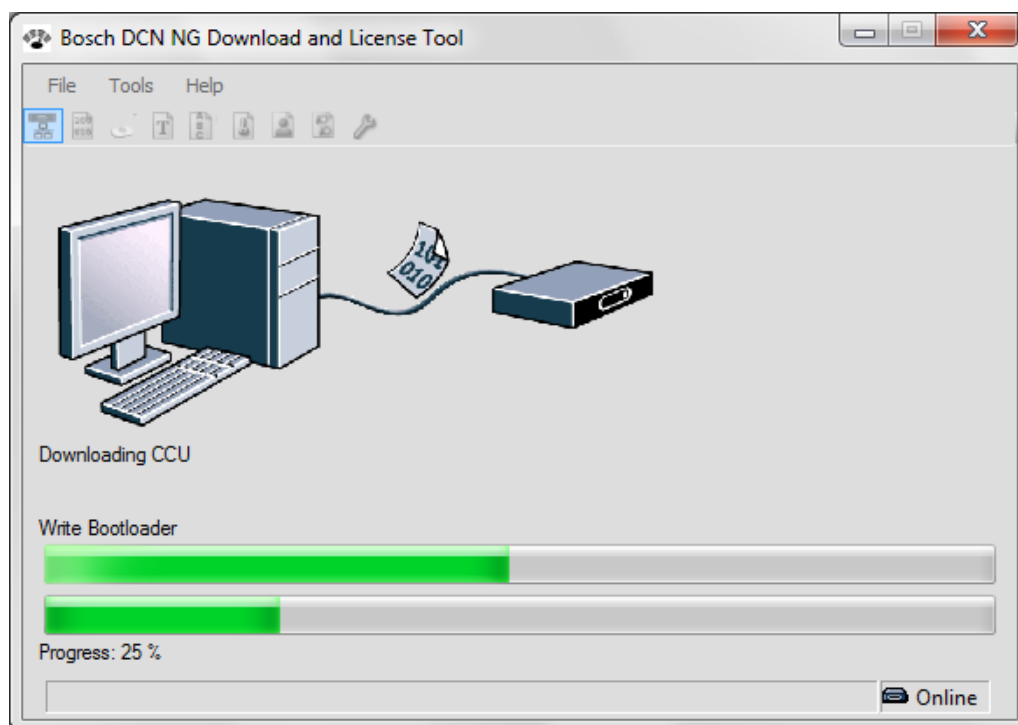
- The CCU is of the type DCN-CCU2 or DCN-CCUB2, and:
- The connection to the CCU is established (refer to *Section 2.6 Status bar*), and:
- The CCU is not in use by another application, and:
- No other function of the Bosch Download and License Tool is in progress.

Proceed as follows to download software into the CCU:

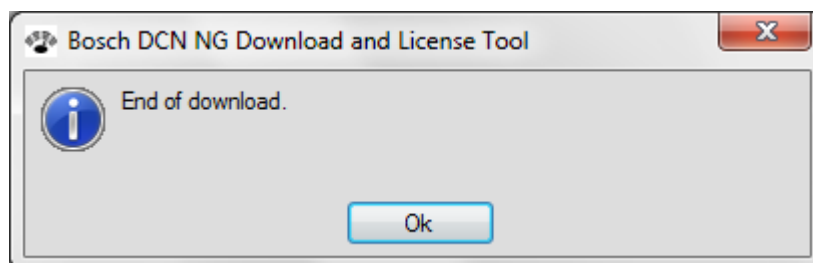
1. Select **Tools** -> **Download CCU** from the menu bar or click the button as shown:
 - All menu items, icons and close buttons become disabled.



The **Download CCU** process starts. The following window shows the progress:



When the download process is completed without errors, the following window appears:



2. Click **OK** to complete and exit the **Download CCU** process.

4.3 Download Optical Devices



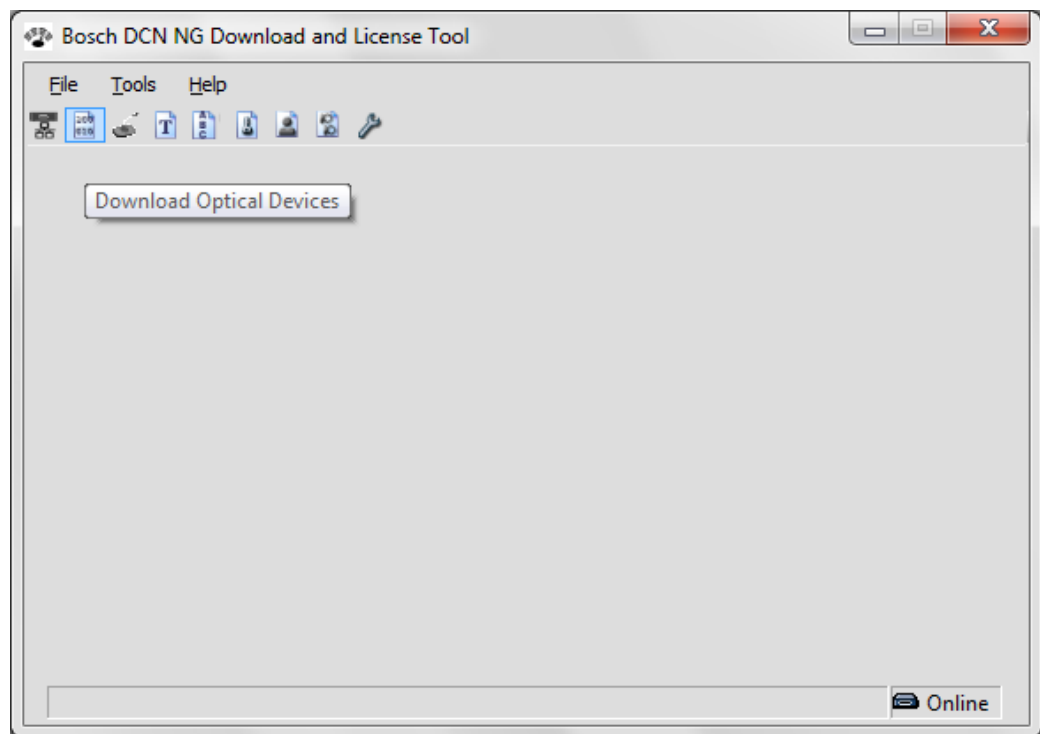
NOTICE!

The **Download Optical Devices** function is enabled when:

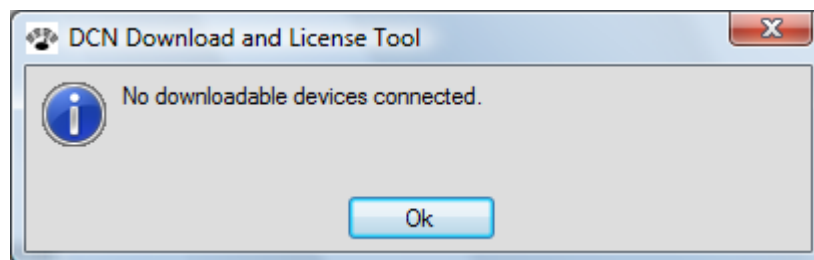
- The CCU is of the type DCN-CCU2, and:
- The CCU is not in **slave mode**, and:
- The connection to the CCU is established (refer to *Section 2.6 Status bar*), and:
- The CCU is not in use by another application, and:
- No other function of the Bosch Download and License Tool is in progress.

Proceed as follows to download the optical devices connected to the CCU:

1. Select **Tools -> Download Optical Devices** from the menu bar or click the button as shown:
 - The Bosch Download and License Tool prepares the download by browsing the network for downloadable optical devices.



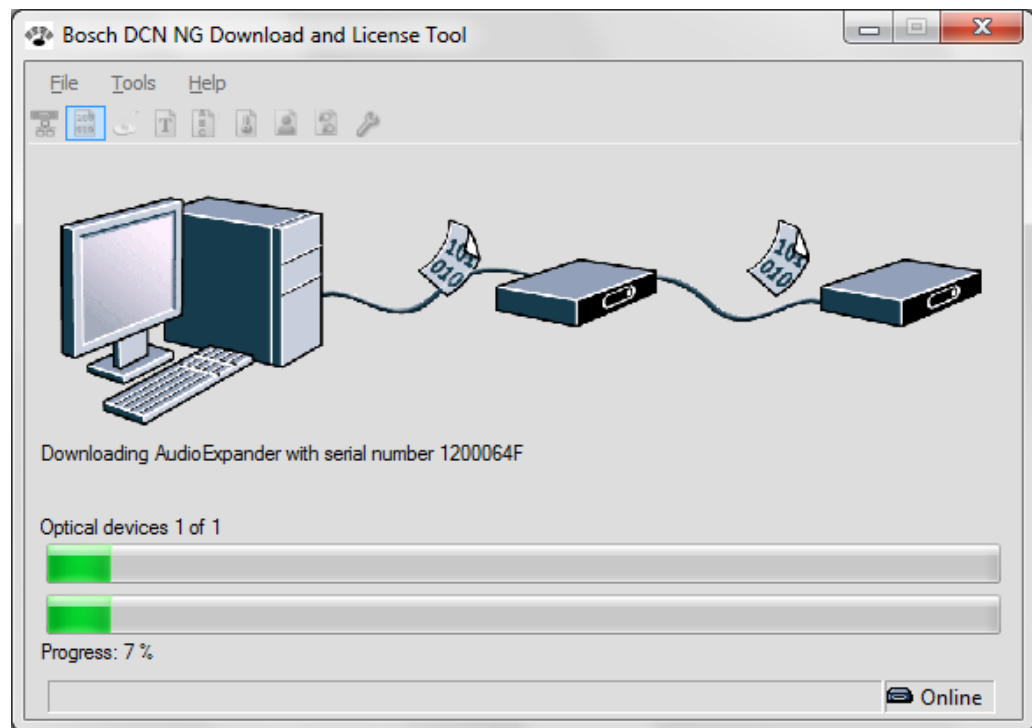
If no downloadable device is found, the following window appears:



1. Click **OK** to complete and exit the **Download Optical Devices** process.

Optical devices available

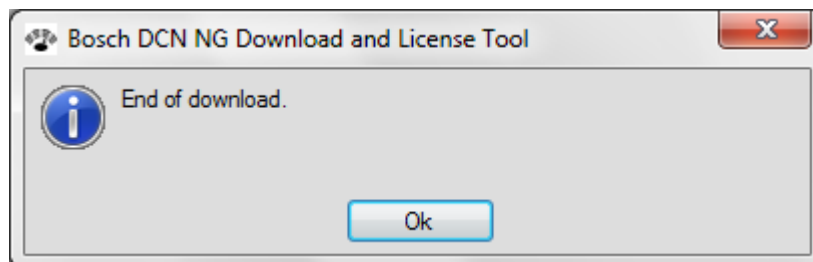
The following window shows the progress when downloadable optical devices are available:



All menu items, icons and close buttons become disabled.

All downloadable optical devices are sequentially downloaded. For reference purpose the serial number of the optical device is shown during downloading.

When the download is completed without errors, the following window appears:



1. Click **OK** to complete and exit the **Download Optical Devices** process.

4.4 Download Wireless Units

The **Download Wireless Units** option can be used to download the encryption key (and software to the connected wireless unit) to both the connected CCU or wireless unit.

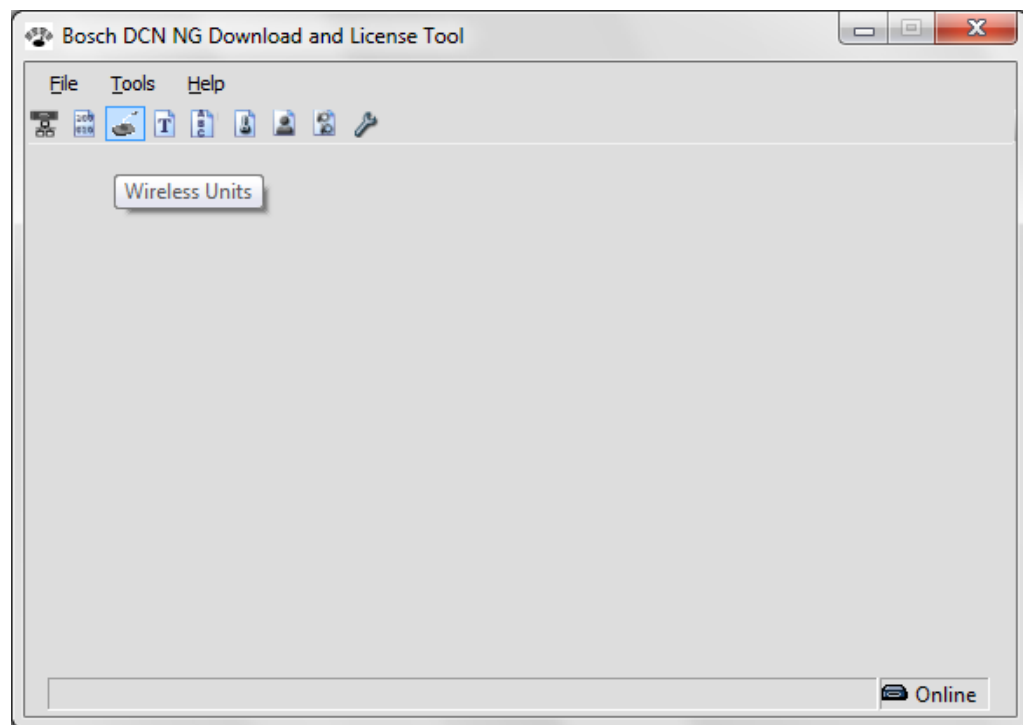


NOTICE!

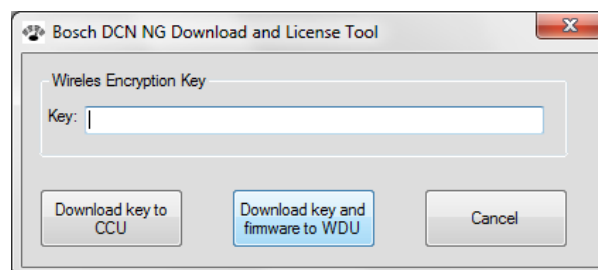
The **Download Wireless Units** function is enabled when:

- The connection to the wireless unit (WDU) is established, or:
- The CCU is of the type DCN-CCU2, and:
- The CCU is not in **slave mode**, and:
- The connection to the CCU is established (refer to *Section 2.6 Status bar*), and:
- The CCU is not in use by another application, and:
- No other function of the Bosch Download and License Tool is in progress.

1. Select **Tools** -> **Download Wireless Units** from the menu bar or click the button as shown:



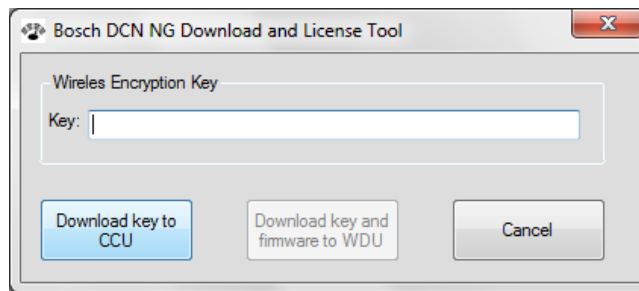
The following window appears:



You have three options:

- **Download key to CCU.** Refer to *Section 4.4.1 Download key to CCU*.
- **Download key and firmware to WDU.** Refer to *Section 4.4.2 Download key and firmware to WDU*.
- **Cancel.** Click the cancel button to return to the main screen without downloading.

4.4.1 Download key to CCU



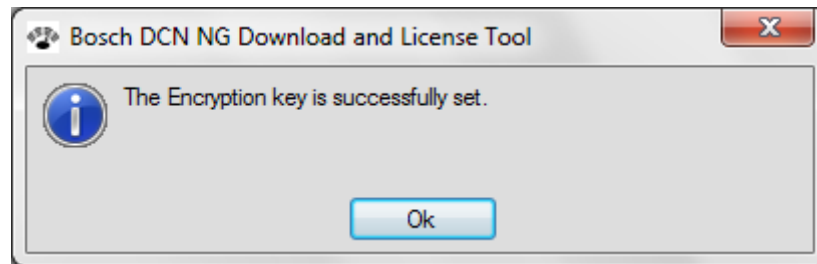
Proceed as follows to download the encryption key to the CCU:

1. Connect the CCU (only a DCN-CCU2 or DCN-CCUB2) to the PC. Refer to *Section 4.1 Setup the connection (options)* and *Section 2.6 Status bar*.
2. Switch on the CCU.
3. Enter the encryption key (between 0 and 32 characters) in the key text box.
4. Click the **Download key to CCU** button:
 - The download process starts and the following window appears if the CCU encryption key is successfully set without errors:



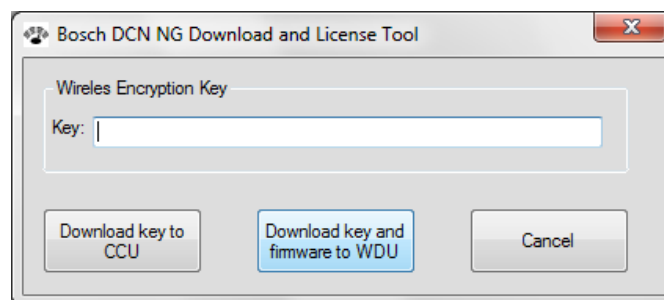
NOTICE!

If no connection with the CCU is established, the **Download key to CCU** button/function is disabled. Refer to *Section 4.1 Setup the connection (options)*.



5. Click **OK** to complete and exit the **Download key to CCU** process.

4.4.2 Download key and firmware to WDU



This option can only be used with the DCN tool DCN-UPTK (upgrade tool kit) connected. The DCN-UPTK is a USB plug-and-play tool which does not require separate installation instructions.

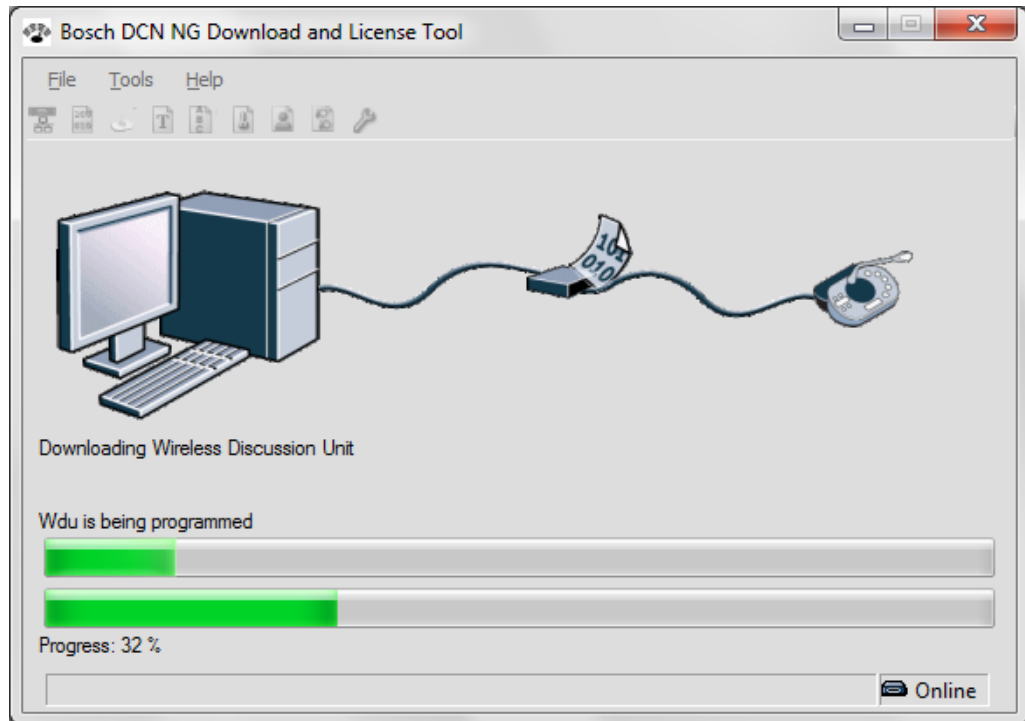
Proceed as follows to download the firmware and encryption key to the wireless unit:

1. Connect the wireless unit to the DCN-UPTK.
2. Connect the DCN-UPTK to the PC.
3. Switch on the wireless unit.

4. Enter the encryption key (between 0 and 32 characters) in the **key** text box.
5. Click the **Download key and firmware to WDU** button:
 - The download process starts and the following window shows the **Download key and firmware to WDU** progress:

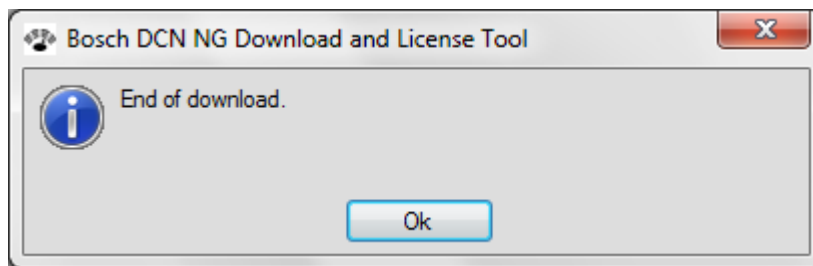
**NOTICE!**

If no connection with the WDU is established, the **Download key and firmware to WDU** button/function is disabled. Check the connections and connected units.



All menu items, icons and close buttons become disabled.

If the download is completed without errors, the following window appears:



6. Click **OK** to complete and exit the **Download key and firmware to WDU** process.

4.5 Download Concentus Font

If a non Latin character/font language was selected during the **Download CCU**, the fonts must be downloaded to the Concentus units.

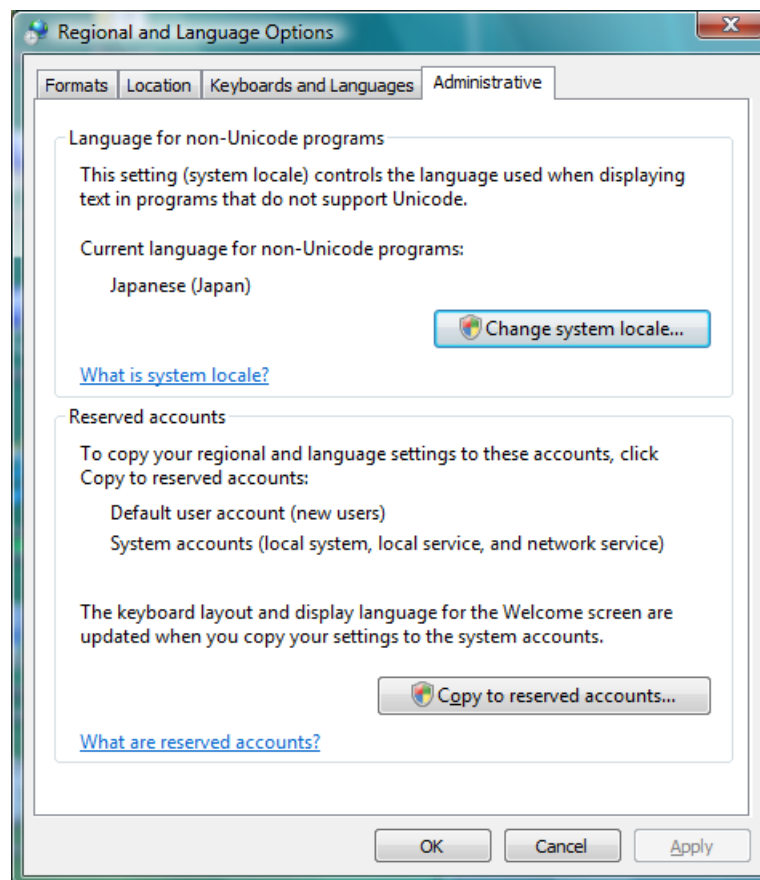
The following languages have non Latin fonts:

- Japanese
- Czech
- Russian
- Chinese (simplified)
- Chinese (traditional)
- Lithuanian
- Slovenian
- Polish
- Slovak
- Romanian

The Bosch Download and License Tool uses the default system font as the font which is downloaded to the Concentus units. To change the system font:

Non Unicode settings for Windows Vista:

1. Select **Control Panel** -> **Change keyboard or other input methods** and click the tab **Administrative**.

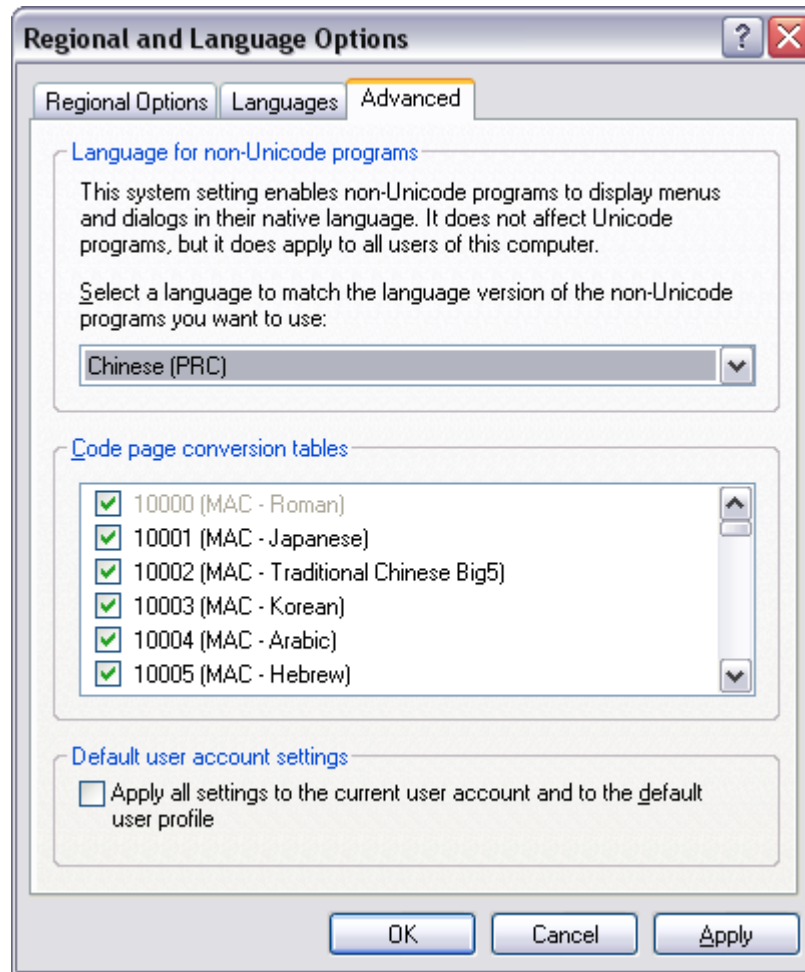


Regional and Languages Options.

1. Click **Change system locale...**
2. Select the required language and click **OK** to confirm the changes.

Non Unicode settings for Windows XP:

1. Select **Control Panel -> Regional and Languages Options** and click the tab **Advanced**.



Regional and Languages Options.

1. Select the language which matches the language selected during the download of the CCU under **Language for non Unicode programs**.
2. Click **OK** to activate the changes.
3. Refer to following *Section 4.5.1 Download fonts to the Concentus units* to continue the download process.

4.5.1 Download fonts to the Concentus units

NOTICE!

The **Download Concentus Font** function is enabled when:

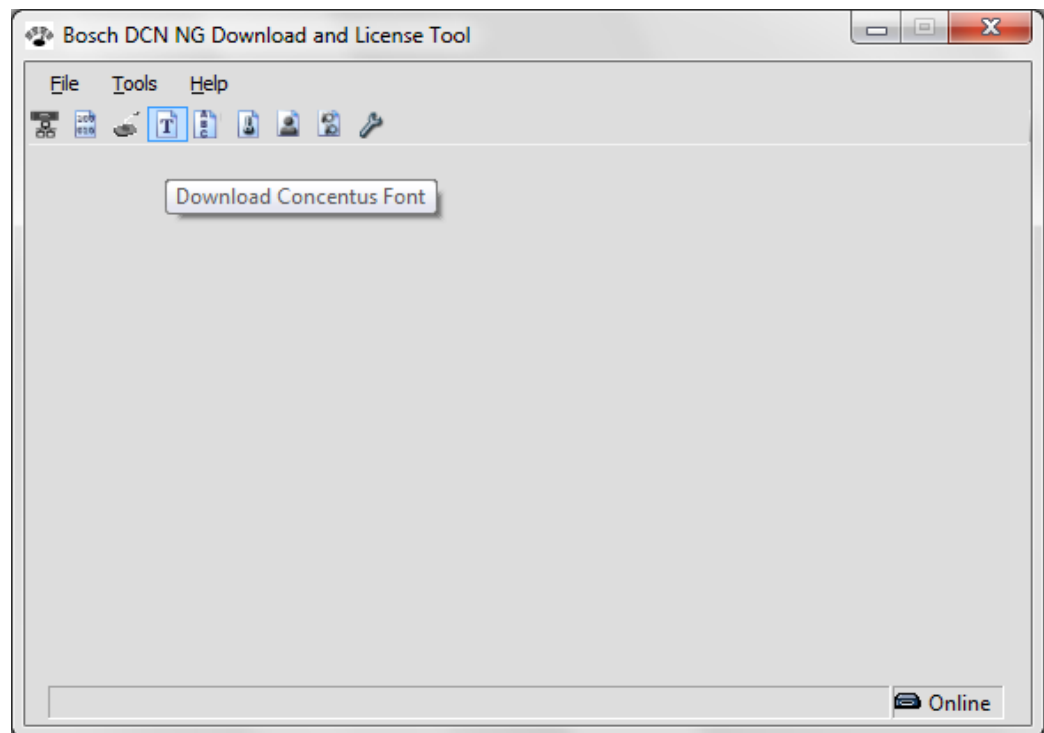
- The connection to one or more Concentus units is established, or:
- The CCU is of the type DCN-CCU2 or DCN-CCUB2, and:
- The CCU is not in **slave mode**, and:
- The connection to the CCU is established (refer to *Section 2.6 Status bar*), and:
- The CCU is not in use by another application, and:
- No other function of the Bosch Download and License Tool is in progress.

**NOTICE!**

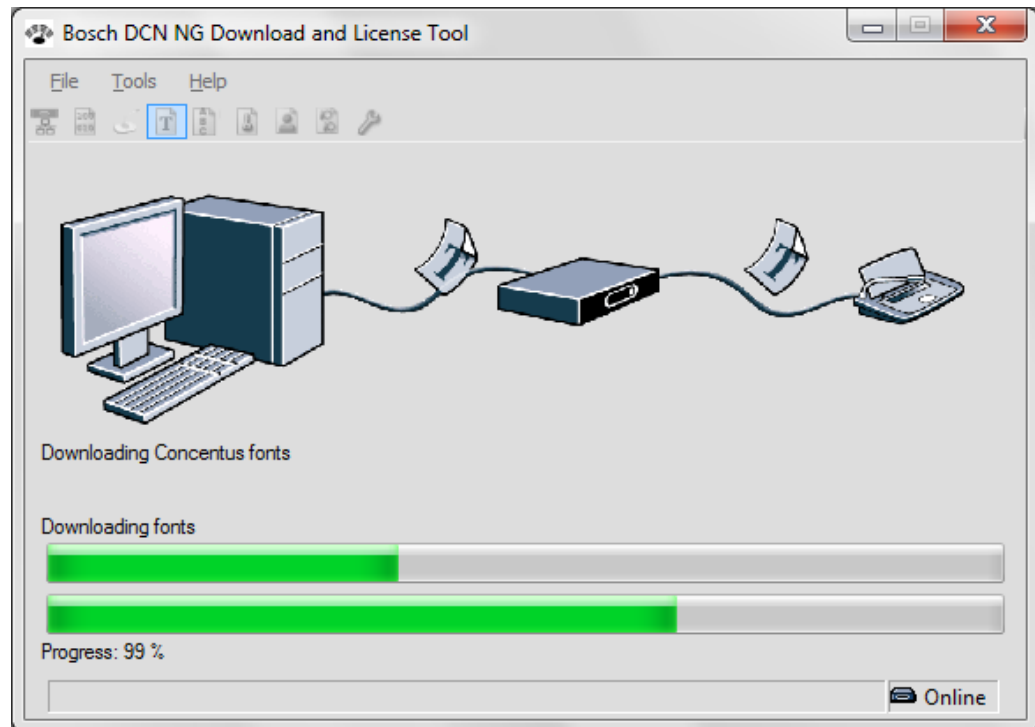
The CCU with the required Concentus display languages must be downloaded before the Concentus fonts are downloaded. Refer to *Section 4.6 Languages*.



1. Select **Tools** -> **Download Concentus Font** from the menu bar or click the button as shown:

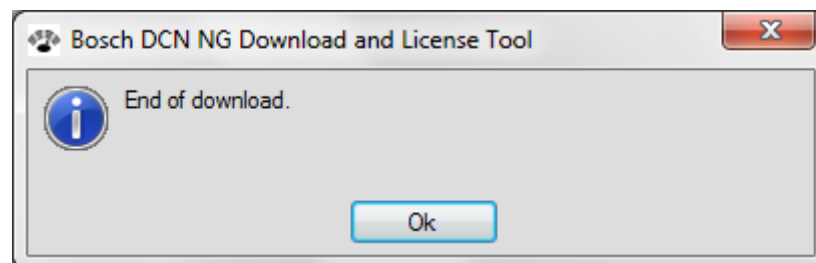


The download process starts and the following window shows the download progress:



All menu items, icons and close buttons become disabled.

If the download is completed without errors, the following window appears:



2. Click **OK** to complete and exit the download process.

4.6 Languages

The Language option is used to set or update the required languages to the connected CCU.

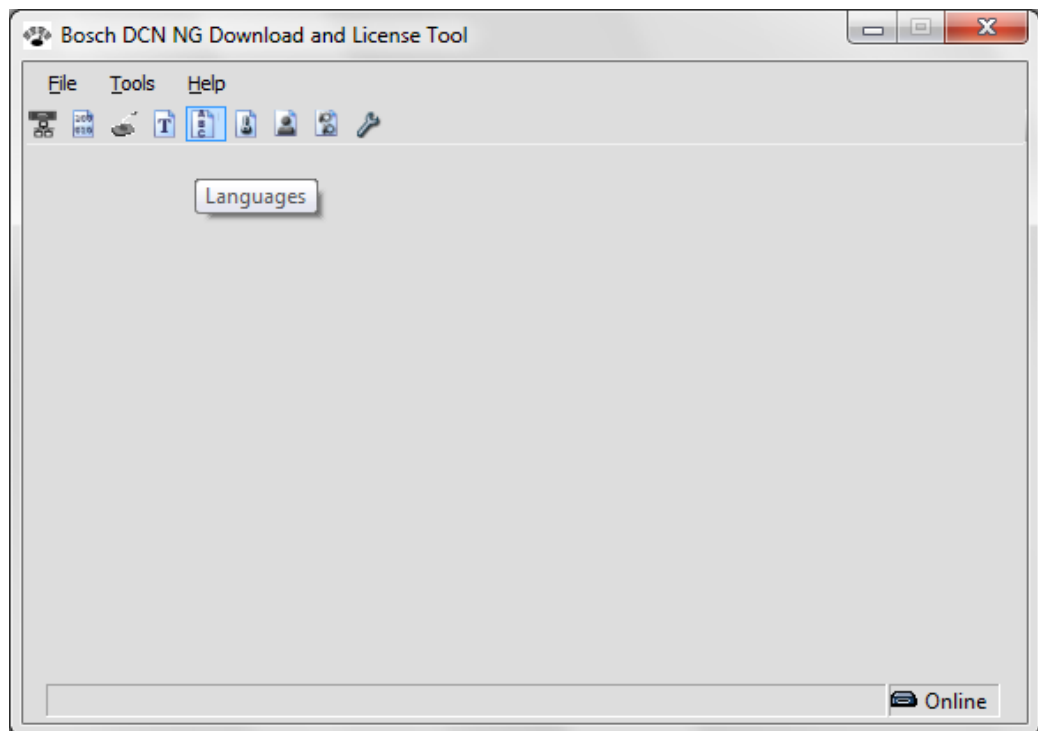
NOTICE!



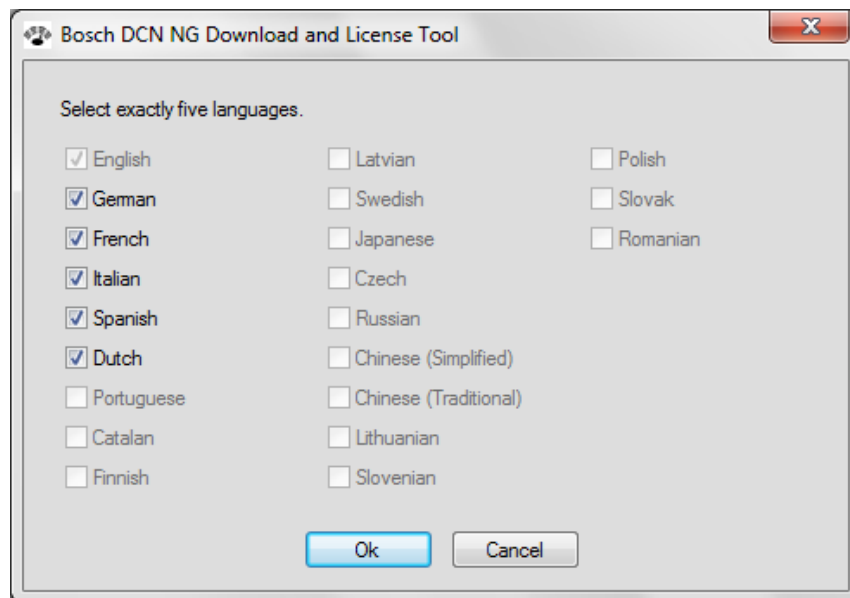
The **Language** function is enabled when:

- The CCU is of the type DCN-CCU2 or DCN-CCUB2, and:
- The CCU is not in **slave mode**, and:
- The connection to the CCU is established (refer to *Section 2.6 Status bar*), and:
- The CCU is not in use by another application, and:
- No other function of the Bosch Download and License Tool is in progress.

1. Select **Tools** -> **Languages** from the menu bar or click the button as shown:



The following window appears:



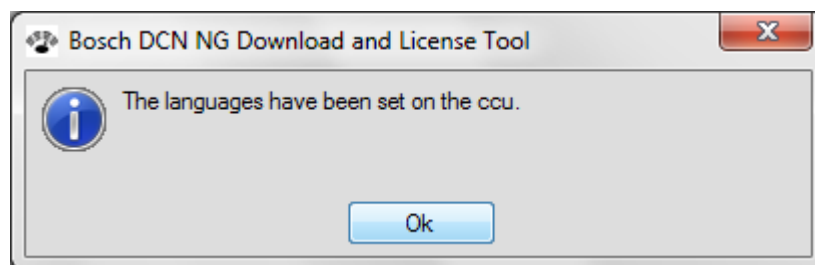
2. Default the German, French, Italian, Spanish and Dutch languages are selected and set. Or, languages which are already set on the CCU are selected.
3. Deselect and select the new required languages (always/maximum 5) and click **OK**. Or, click **Cancel** to return to the main window without new languages set.



NOTICE!

The English language is default selected and cannot be deselected. Due to memory size of some fonts, the following languages cannot be combined: Japanese, Czech, Russian, Chinese (simplified), Chinese (traditional), Lithuanian, Slovenian, Polish, Slovak, Romanian.

As soon the download is completed without errors, the following window appears:



4. Click **OK** to complete and exit the download **Languages** to CCU process.

4.7 Enter License Key

The **Enter License Key** function is used to license the CCU in combination with PC control and open interface.

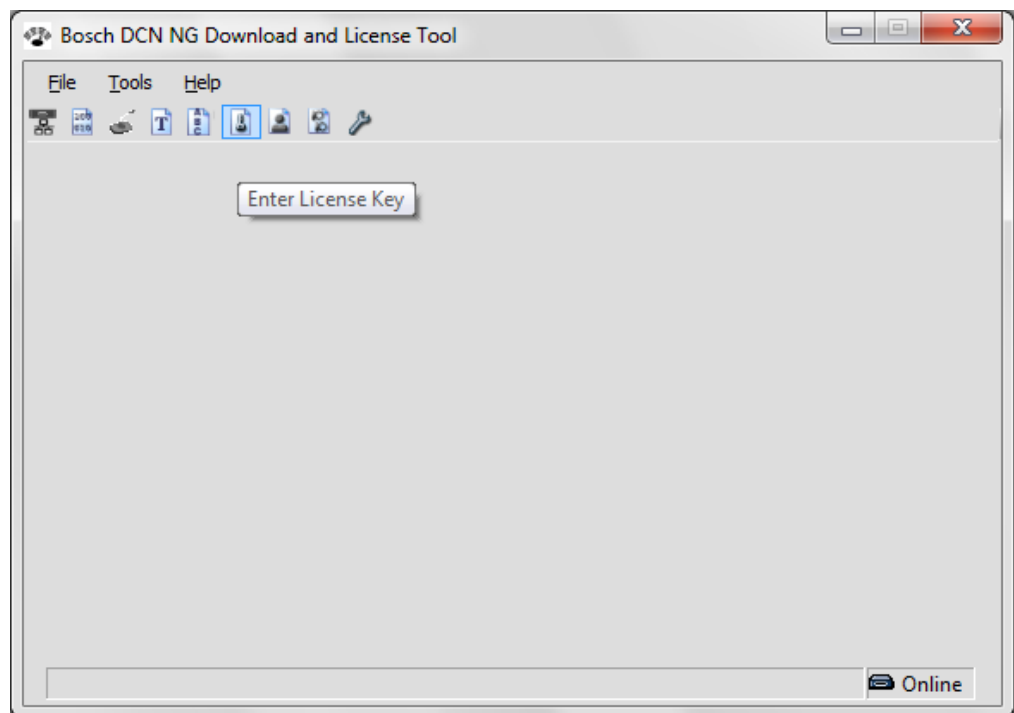
The license key can be purchased at your local Bosch representative.

NOTICE!

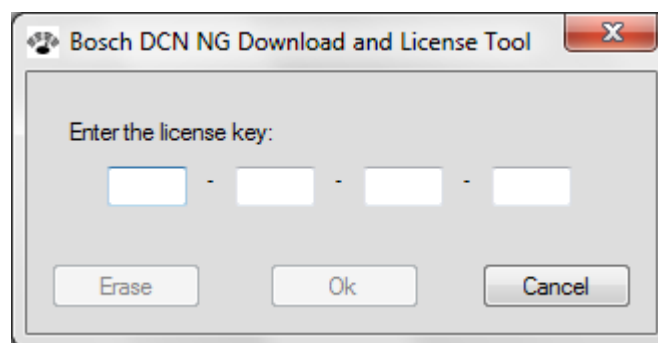
The **Enter License Key** function is enabled when:

- The CCU is of the type DCN-CCU2 or DCN-CCUB2, and:
- The CCU is not in **slave mode**, and:
- The connection to the CCU is established (refer to *Section 2.6 Status bar*), and:
- The CCU is not in use by another application, and:
- No other function of the Bosch Download and License Tool is in progress.

1. Select **Tools** -> **Enter License Key** from the menu bar or click the button as shown:



The following window appears:

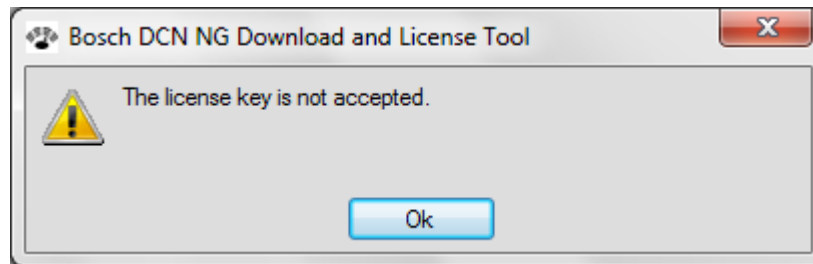


**NOTICE!**

If a license key is already available in the CCU, it is displayed in the text fields. Otherwise the text fields are empty.

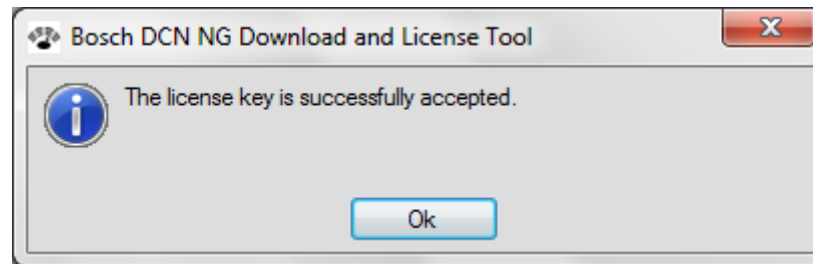
2. Click **Cancel** to terminate **Enter the license Key**. Or:
3. Enter the valid license key (only hexadecimal characters are allowed (A-F and 0-9)) for your system/CCU and click **OK**. Or:
4. Click the erase button to erase the existing license key of your system/CCU and click **OK**.

If the license key is incorrect/not accepted, the following message appears:



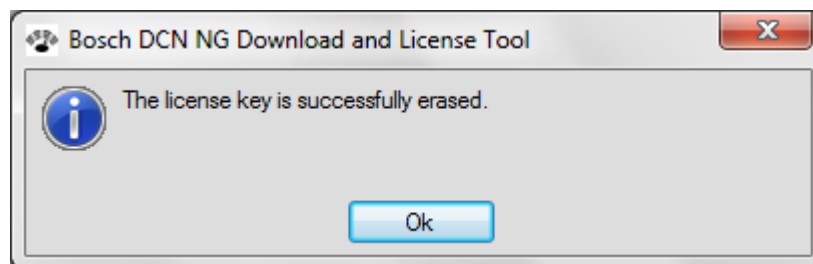
1. Click **OK** to return to the enter license key window and enter the correct license key.

If the correct license key has been entered, the following message appears:



2. Click **OK** to complete and exit the license process.

If the license key has been erased, the following message appears:



1. Click **OK** to complete and exit the license key erase process.

4.8 Preset External Contact

The **Preset External Contact** function is to define the behavior of the external contact of the Concentus and Flush voting panels. Refer to the DCN Installation and Operation manual how to connect the external contact.



NOTICE!

The license key in the CCU must contain at least DCN-SWSMV, DCN-SW or LBB 4185 before the External Contact can be preset.

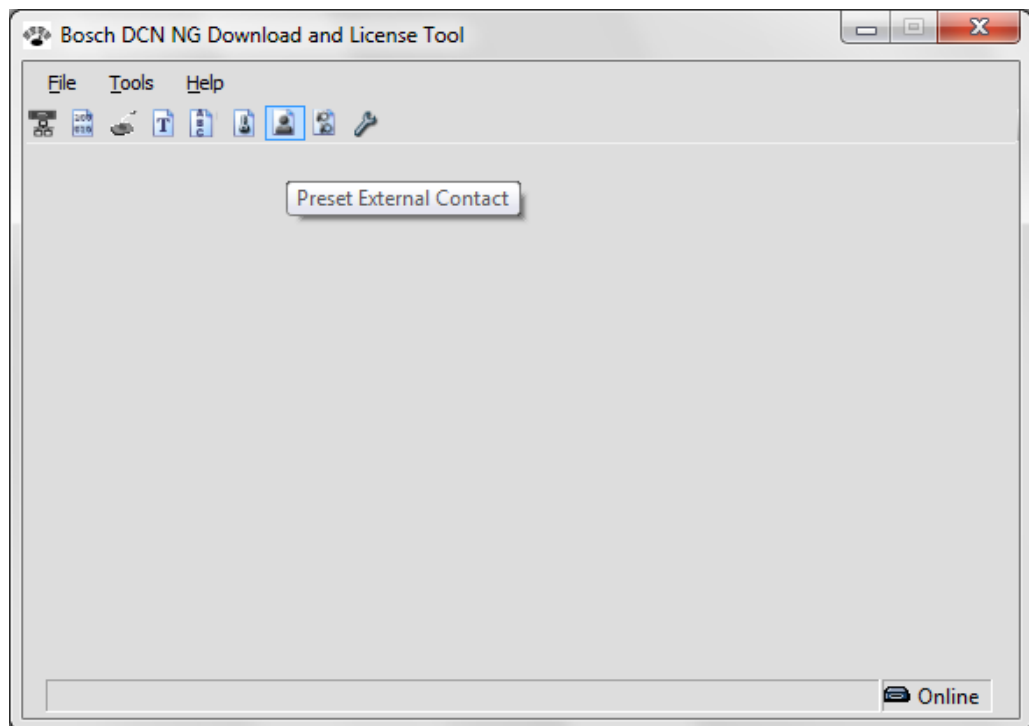


NOTICE!

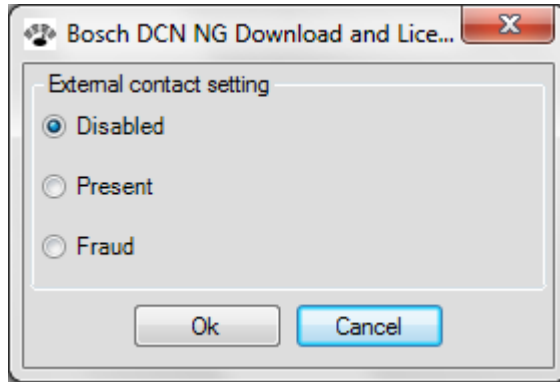
The **Preset External Contact** function is enabled when:

- The CCU is of the type DCN-CCU2 or DCN-CCUB2, and:
- The CCU is not in **slave mode**, and:
- The license for system installation is present, and:
- The connection to the CCU is established (refer to *Section 2.6 Status bar*), and:
- The CCU is not in use by another application, and:
- No other function of the Bosch Download and License Tool is in progress.

1. Select **Tools** -> **Preset External Contact** from the menu bar or click the button as shown:



The following window appears:

**NOTICE!**

The current CCU external contact setting is displayed/selected.

The buttons/functions are disabled when no connection with the CCU is established. Refer to *Section 4.1 Setup the connection (options)*.

2. Select the desired **External contact setting** and click **OK** to confirm. Or, click the **Cancel** button to ignore the setting and exit.

External contact function:

- **Disabled:** The external contact has no function.
- **Present:** The external contact replaces the present button which is voting button 1 on the Concentus unit or Voting panels.
- **Fraud:** The external contact must be activated simultaneously with the present and voting buttons.

4.9

Preset Individual Channels

The **Preset Individual Channels** function is to route the individual delegate microphone to an audio channel. These individual channels can only be received by audio expanders or Cobranet devices. Channel selectors and Integrus receivers block the channels. A typical application for individual channels is to individual record a select number of microphones in a courtroom environment.

**NOTICE!**

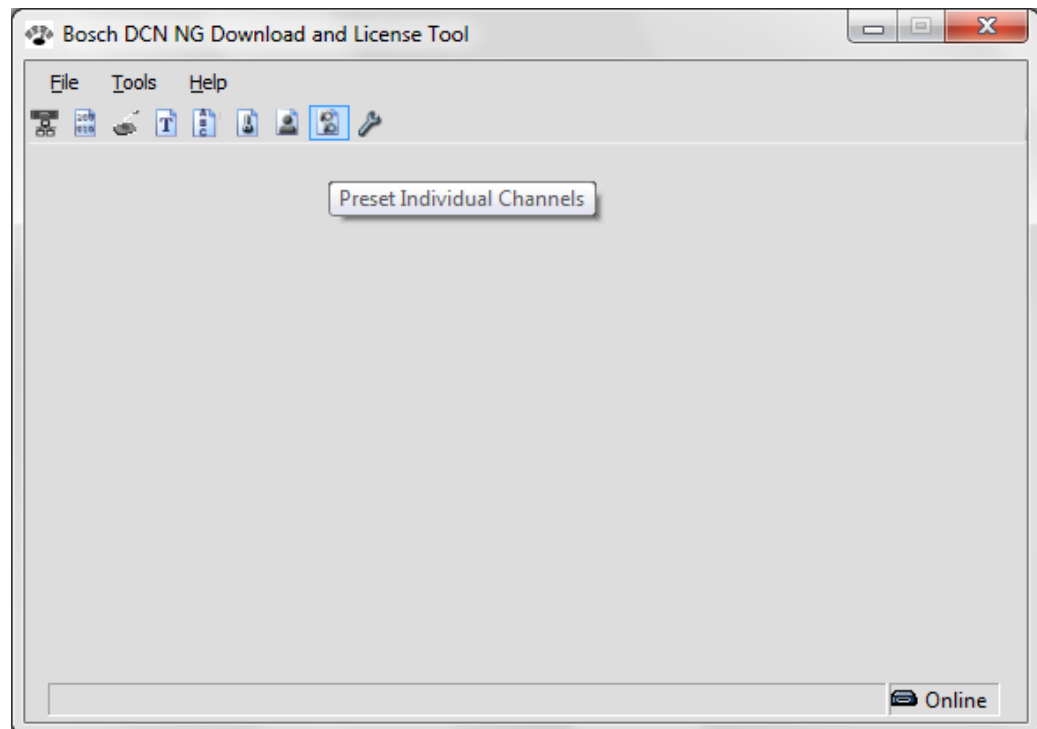
The **Preset Individual Channels** function is enabled when:

- The CCU is of the type DCN-CCU2, and:
- The CCU is not in **slave mode**, and:
- The license for system installation is present, and:
- The license for individual channels is set, and
- The connection to the CCU is established (refer to *Section 2.6 Status bar*), and:
- The CCU is not in use by another application, and:
- No other function of the Bosch Download and License Tool is in progress.

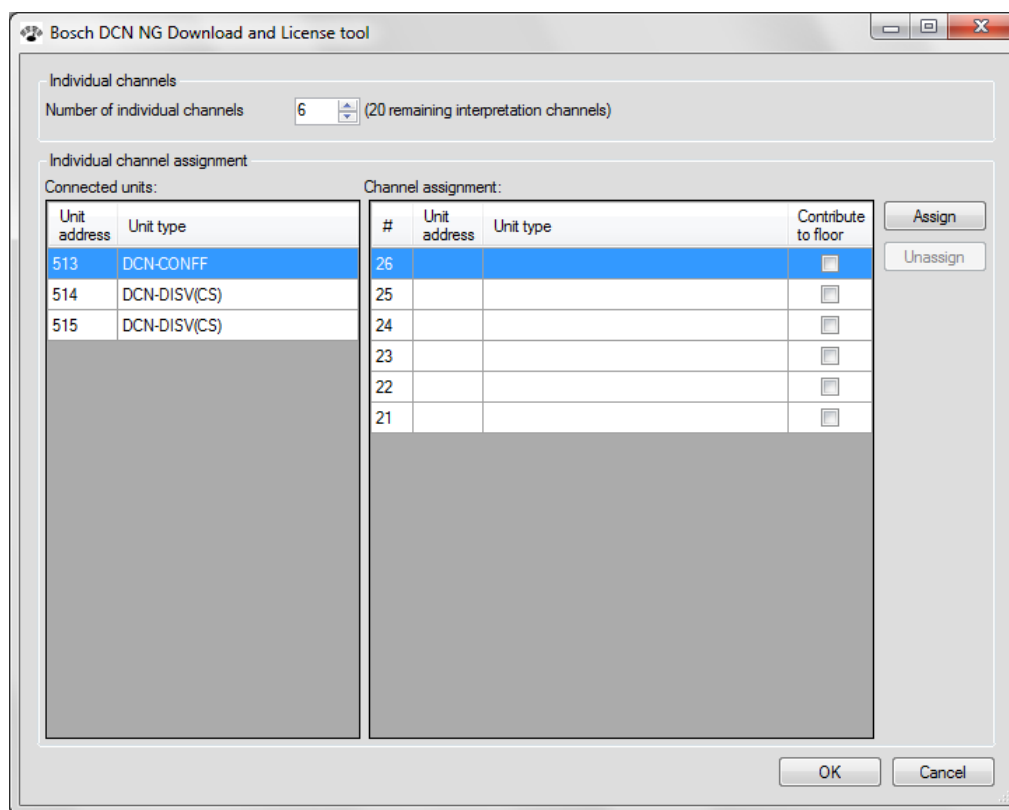
**NOTICE!**

- When the CCU is part of a Multi CCU ring the audio cannot be routed to an audio expander or a Cobranet device.
- The license key in the CCU must contain at least DCN-SWIND before the Individual Channels can be preset.
- The individual channels cannot be used in combination with the LBB 4190 range software.
- When the number of individual channels equals 26, the setup menu in the interpreter desk is not available.

1. Select **Tools** -> **Preset Individual Channels** from the menu bar or click the button as shown:



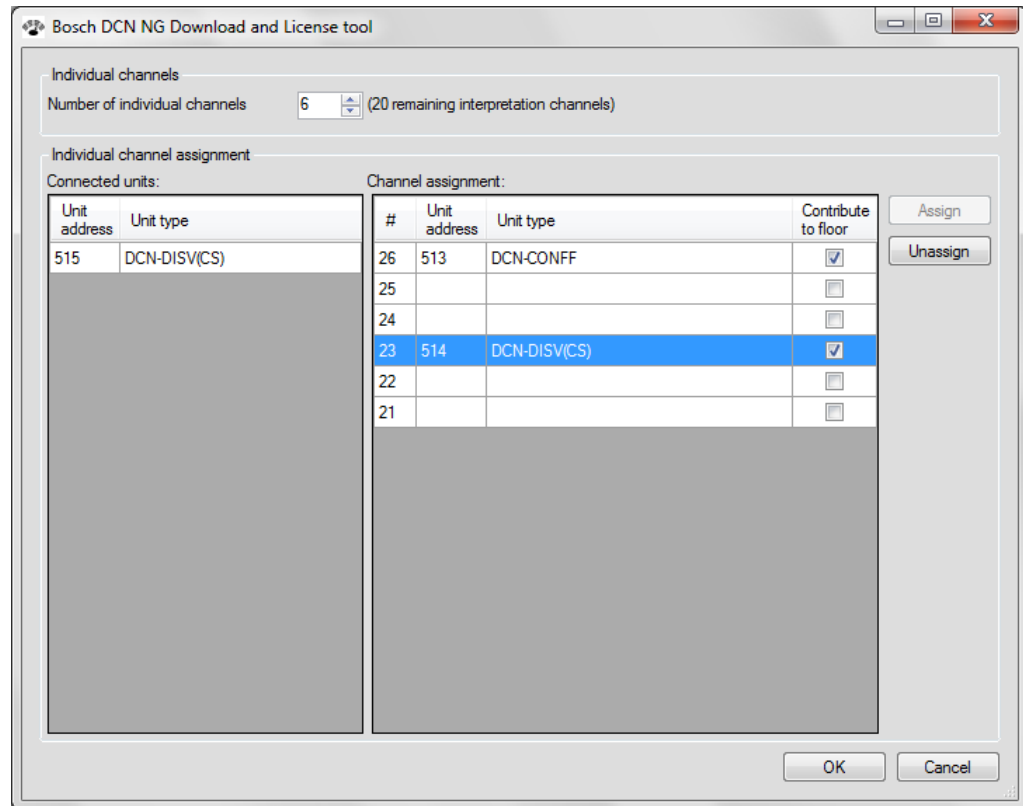
The following window appears if individual channels are present:



The individual channels are sharing channels with interpretation contribution channels.

Before individual channels can be routed, the number of individual channels have to be defined.

2. Select the desired **Number of individual channels** by keying-in a number or using the spin buttons:



The individual channels start at channel number 26, the next will be 25, 24, 23, etc.

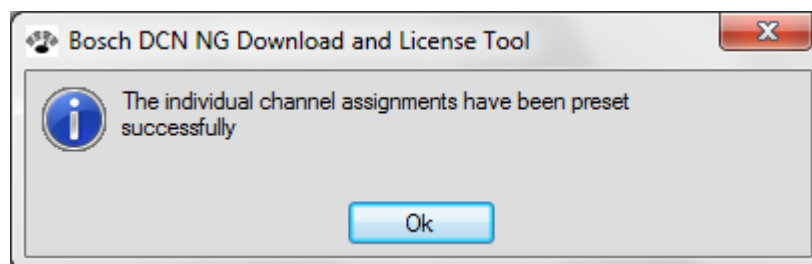
3. Select a unit in the left column and a channel in the right column to assign the unit to an individual channel.



NOTICE!

A unit selected in the left column will lit all its LEDs (for identification purposes) until it is assigned to an channel.

4. Decide whether the unit must contribute it's signal to the floor channel. You might not want to route the audio to the floor in case the need for audio distortion/vocoder is required (witness protection often needs unrecognizable audio). In this case the audio is routed to an output of an expander using an individual channel, than distorted/vocoded by an external audio processing device and than routed to the floor via the audio input of the CCU, expander or Cobranet interface.
5. Click **OK** to apply the settings to the CCU/system. Or, click the **Cancel** button to ignore the settings and exit.
 - The following window appears if the individual channels are correctly set:



6. Click **OK** to complete and exit the **Preset Individual Channels** process.

Bosch Security Systems B.V.

Kapittelweg 11
4827 HG, Breda
The Netherlands

www.boschsecurity.com

© Bosch Security Systems B.V., 2011