

# DCN SMD Demonstrator

DCN-SWSMD



**BOSCH**



---

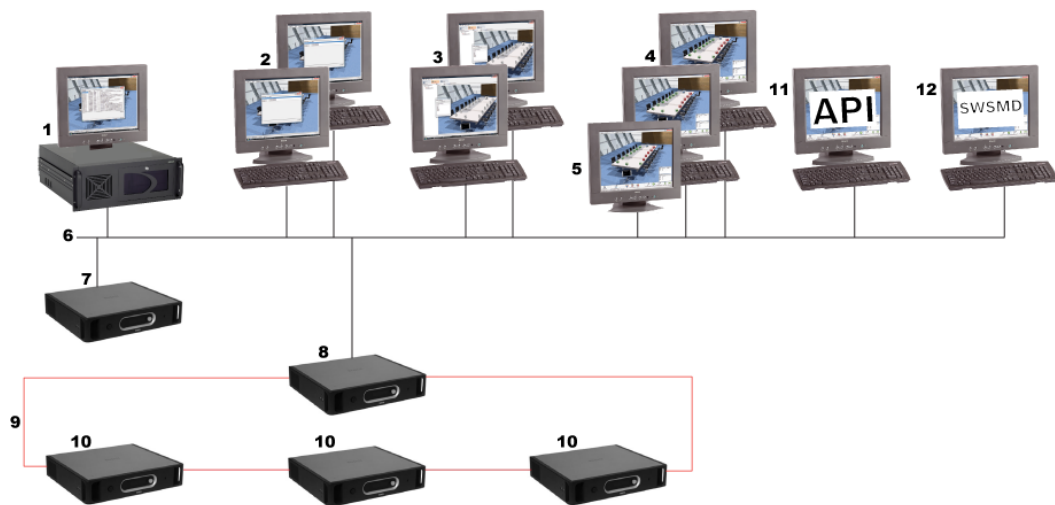
## Table of contents

<b>1</b>	<b>Introduction</b>	<b>4</b>
1.1	Copyright and disclaimer	4
1.2	Document history	5
<b>2</b>	<b>Requirements</b>	<b>6</b>
<b>3</b>	<b>Getting started</b>	<b>7</b>
<b>4</b>	<b>Troubleshooting</b>	<b>9</b>

# 1 Introduction

The DCN-SWSMD Demonstrator is a PC-application communicating with the DCN-SW server to receive streaming meeting data. The DCN-SWSMD Demonstrator has a user interface to receive; voting results, speaker requests, agenda details and attendance registration from the DCN-SWSMD application software module within the DCN Next Generation conference system.

All DCN-SW components can - but do not necessarily need to be - run from separate computers to integrate seamlessly with each other. This allows the possibility for assigning functionality to different users and/or PCs, or, for instance, let one or more users configure the set-up and register delegates (Bosch DCN Conference Software Configuration Application), and other users actually control the meeting on separate PCs (Bosch DCN Conference Software Operator Application).



**Figure 1.1: DCN-NG\_system-overview**

1. Bosch DCN Conference Software Server and Server Console
2. Bosch DCN Conference Software Print Application
3. Bosch DCN Conference Software Configuration Application
4. Bosch DCN Conference Software Operator Application
5. Touch screen
6. Ethernet connections
7. CCU2 (standalone) (Central Control Unit)
8. CCU2 (master in multi ccu mode) (Central Control Unit)
9. Bosch optical network
10. CCU2 (slave in multi ccu mode) (Central Control Unit)
11. DCN-SWAPI (Software API)
12. DCN-SWSMD (XML Streaming Meeting Data)

## 1.1 Copyright and disclaimer

All rights reserved. No part of this document may be reproduced or transmitted in any form by any means, electronic, mechanical, photocopying, recording, or otherwise, without the prior written permission of the publisher. For information on getting permission for reprints and excerpts, contact Bosch Security Systems B.V..

The content and illustrations are subject to change without prior notice.

## 1.2 Document history

Release date	Documentation version	Reason
2013.03.04	V1.0	1st release.
2013.06.06	V1.1	Section 3 adapt.

## 2 Requirements

The DCN-SWSMD Demonstrator application is developed to run on Windows Vista \* and Windows 7 \* 32-bit or 64-bit operating systems, having the latest updates and service packs installed.

\* excluding starter versions.

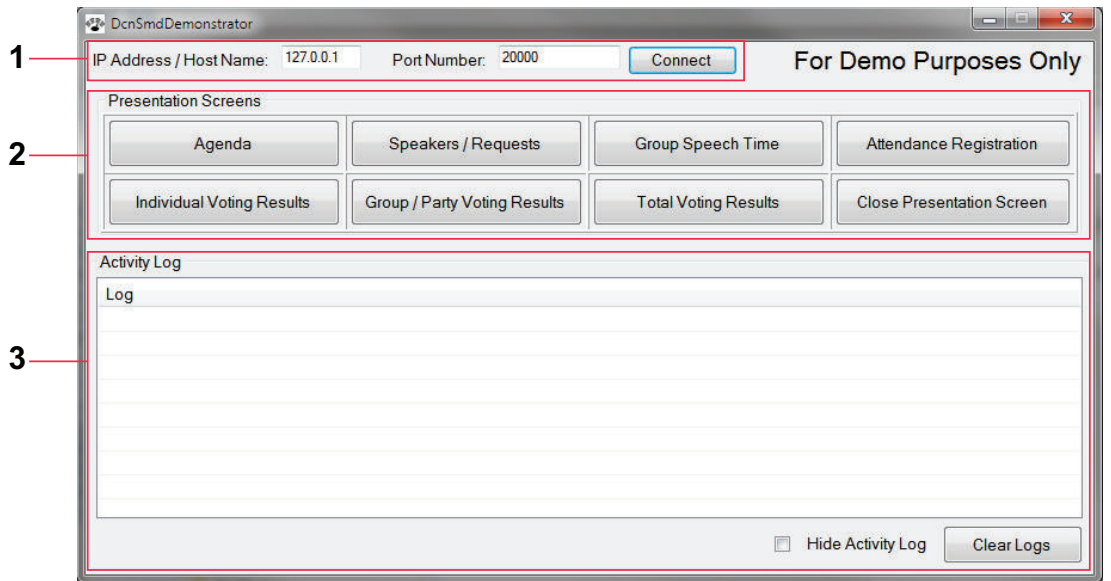
### 3 Getting started

- The DCN-SWSMD Demonstrator application supports DCN Next Generation conference systems from version 4.1 onwards, and can be found in the directory: \Tools \DcnSmdDemonstrator\Application\ on the [DVD] supplied with the DCN-CCU(B)2.
- The source code of DCN-SWSMD Demonstrator application can be used to make your own customer specific version, and can be found in the directory: \Tools \DcnSmdDemonstrator\Sources\ on the [DVD] supplied with the DCN-CCU(B)2.
- DCN-SWSMD and DCN-SW helpfiles and manuals can be found in the directory: \docs\ on the [DVD] supplied with the DCN-CCU(B)2.

#### The user interface

The user interface of the DCN-SWSMD Demonstrator application guides you through the actions required to retrieve the meeting data streamed from the DCN-SW server.

After starting-up the DCN-SWSMD Demonstrator application, the initial screen is displayed, which is divided in the following screen sections:

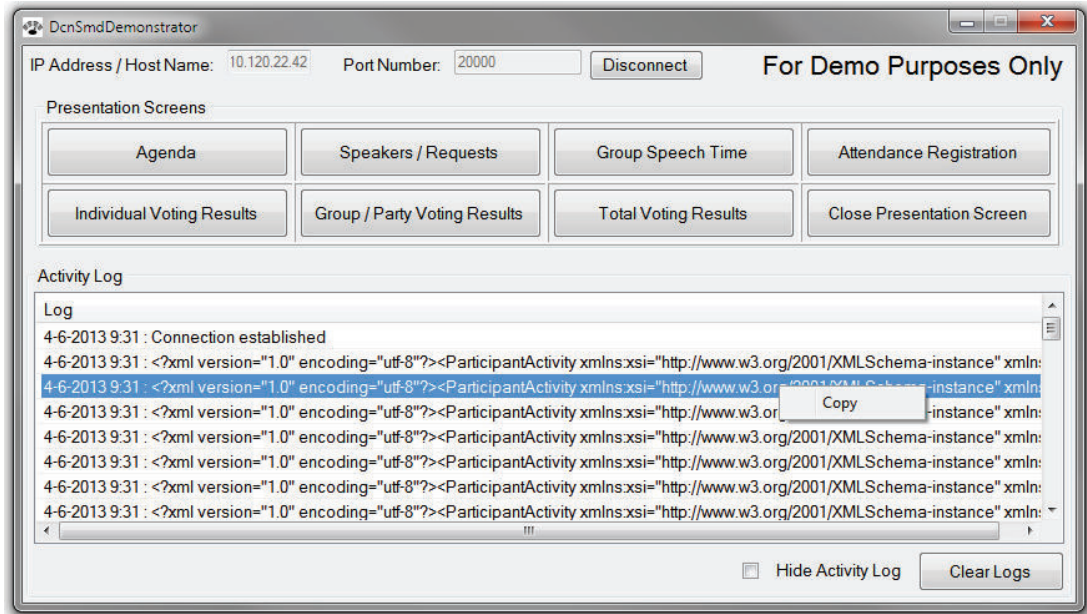


1. DCN-SW Server connection section
2. Functionality/presentation screen buttons
3. Activity Log section

#### Establish the connection with the DCN-SW server

The DCN-SWSMD Demonstrator application is connected, via TCP/IP, with the DCN-SW server. To establish the connection between the DCN-SWSMD Demonstrator and DCN-SW server, do the following:

1. On the DCN-SW server connection section (1), establish the connection with the DCN-SW Server by typing the DCN-SW server *IP address* or *hostname* in the text box and then click the *Connect* button:  
For results, see the *Activity Log* section (3):  
If needed, copy the relevant logging from the DCN-SWSMD Demonstrator *Activity Log* section (3) for detailed analyses of the XML-stream.
2. To clear the *Activity Log*, click the *Clear Logs* button.



### View meeting data

You can view the meeting data by clicking the respective button (screen section 2) as described in the following paragraphs. The meeting data is logged in the *Activity Log* section (3).

### Change screen display mode

By default, each view is displayed full-screen.

To change the screen display mode:

- ▶ Click the right mouse button to change the full-screen mode.

To switch between the presentation-screens:

- ▶ Have the focus on the DCN-SWSMD client screen display, and then click the respective button (refer to the following paragraphs):

### Receive agenda details

To display the *agenda* details, click the *Agenda* button.

### Receive speaker/requests lists

To display a *list of active speakers and a request list*, click the *Speakers / Requests* button.

### Receive group speech time

To display the *group speech time*, click the *Group Speech Time* button.

### Receive attendance registration

To display the *attendance registration* details, click the *Attendance Registration* button.

### Receive individual voting results

To display the *individual voting results*, click the *Individual Voting Results* button.

### Receive group/party voting results

To display the *group/party voting results*, click the *Group / Party Voting Results* button.

### Receive total voting results

To display the *total voting results*, click the *Total Voting Results* button.

### Close screen view

To *close* any screen view, click the *Close Presentation Screen* button.



## 4 Troubleshooting

### **No XML data received:**

- A meeting has to be active for the DCN-SW server to send XML data.
- The DCN-SW server client uses port 20000 for the Streaming Meeting data; make sure it is open in the firewall.





**Bosch Security Systems B.V.**

Torenallee 49

5617 BA Eindhoven

The Netherlands

**[www.boschsecurity.com](http://www.boschsecurity.com)**

© Bosch Security Systems B.V., 2013