

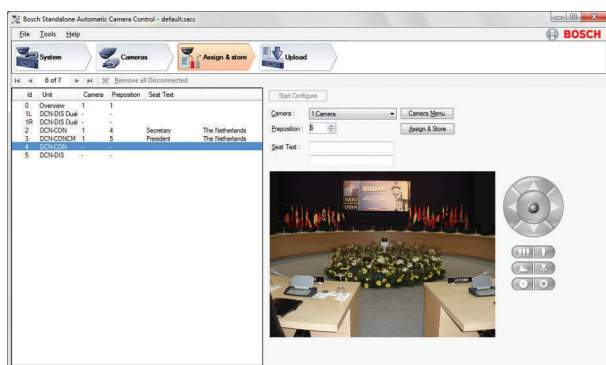
DCN-SWSACC-E Standalone camera control license

www.boschsecurity.com



BOSCH

Invented for life



- ▶ On-screen Pan, Tilt and zoom control
- ▶ Supports Windows 8.1 and 10
- ▶ For use with DCN Next Generation and DCN Wireless Discussion Systems
- ▶ Print-out of configuration setting
- ▶ On-screen help facility

DCN-SWSACC-E Standalone camera control license of the DCN Conference systems interfaces with the Bosch Allegiant or Autodome. It selects fixed or movable cameras to be activated to display the current active speaker at a conference.

Functions

When a chairman or delegate microphone is activated on the DCN Conference system equipment, the camera assigned to that position is activated. When none of the microphones are active, an overview camera is automatically selected. The image can be displayed on projectors or other screens together with information about the current speaker if required (such as delegate identification). The system operator has a dedicated screen, which also displays information about which camera is active. This system provides an extra dimension to conference proceedings.

The DCN-SWSACC-E software runs on a PC which is temporarily connected to configure the DCN Next Generation or DCN Wireless Discussion System and the Bosch Allegiant or Autodome.

With this PC the camera positions can be defined using the on-screen Pan, Tilt and Zoom control and stored as prepositions in the Autodome camera. At the same time a delegate position is linked to a camera preposition.

When all delegate positions are linked to camera prepositions the configuration needs to be uploaded to the DCN Conference system where it will be stored persistent in the CCU.

The configuration file can be printed and stored on the temporarily PC for later use. In case help or more information is needed the on-screen help can be activated from the software.

After configuration the PC is removed and Bosch Allegiant or Autodome is directly connected to the DCN Conference system.

Parts included

Quantity	Component
1	E-mail with license activation information

Technical specifications

Electrical

Supported DCN systems	DCN Next Generation version 2.68 or higher.
	DCN Wireless Discussion System version 2.68 or higher.
Supported operating systems	Windows 8.1 Pro 32 or 64 bits (including .NET Framework 3.5 feature). or Windows 10 Pro 32 or 64 bits (including .NET Framework 3.5 feature). All with the latest service packs and updates.
PC requirements	Dual core processor (2.66 GHz) and 2 Gb internal memory.

At least one serial port (2 serial ports are preferred).

In case a PC without serial ports is used one or two separate USB to serial port converters are needed.

Mechanical

Dimensions (H x W x D)	240 x 180 x 46 mm
Weight	0.375 kg

Ordering information

DCN-SWSACC-E Standalone camera control license
DCN-SWSACC-E Standalone camera control license. Interfaces DCN Conference systems with the Bosch Allegiant or Autodome.
Order number **DCN-SWSACC-E**

Represented by:

Europe, Middle East, Africa:
Bosch Security Systems B.V.
P.O. Box 80002
5600 JB Eindhoven, The Netherlands
Phone: + 31 40 2577 284
emea.securitysystems@bosch.com
emea.boschsecurity.com

Germany:
Bosch Sicherheitssysteme GmbH
Robert-Bosch-Ring 5
85630 Grasbrunn
Germany
www.boschsecurity.com

North America:
Bosch Security Systems, Inc.
130 Perinton Parkway
Fairport, New York, 14450, USA
Phone: +1 800 289 0096
Fax: +1 585 223 9180
onlinehelp@us.bosch.com
www.boschsecurity.us

Asia-Pacific:
Robert Bosch (SEA) Pte Ltd, Security Systems
11 Bishan Street 21
Singapore 573943
Phone: +65 6571 2808
Fax: +65 6571 2699
apr.securitysystems@bosch.com
www.boschsecurity.asia