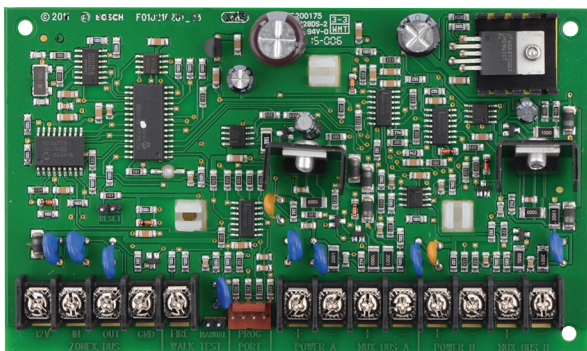


# D8125MUX Expansion module, Multiplex

www.boschsecurity.com



**BOSCH**  
Invented for life



- ▶ Multiplex bus controls two independent class-B buses
- ▶ Aux Power terminals that can be used for remote devices
- ▶ Programmed with D5060 Handheld Programmer
- ▶ Operation monitoring LED
- ▶ Connect to Zonex 1 or Zonex 2

The D8125MUX Multiplex Bus Interface Module and associated modules and detectors are used to expand the addressable points of a compatible Bosch control panel beyond their standard number of onboard initiating zones or points. The D8125MUX module is installed in the control panel enclosure, and is connected to either Zonex 1 or Zonex 2 on the control panel where it scans the multiplex (MUX) points connected to it and reports the points' status to the control panel. Point index programming then determines if an action on the part of the control panel is required (alarm response, trouble response, and so on).

## Functions

### Two Independent Buses

The multiplex bus interface can control two independent class-B buses. A fault on one MUX bus does not prevent the other from operating normally.

### Aux Power Terminals

The D8125MUX has Aux Power terminals labeled Power A (+,-) and Power B (+,-) that can be used for remote devices that require an uninterrupted source of power. Up to 200 mA are available at these terminals.



### Notice

Observe correct polarity when connecting devices to these power terminals.

### D5060 Hand-held Programmer

Use the D5060 Multiplex Point Programmer to program multiplex bus points. The D5060 is not required when programming "i" class modules. In addition to programming points, use the D5060 to view the MUX device point number.

## Certifications and approvals

Region	Regulatory compliance/quality marks
USA	UL AMCX: Central Station Alarm Units (UL1610, UL1635), AOTX: Local Alarm Units (UL464, UL609), APAAW: Police Station Alarm Units (UL365, UL464), APOU: Proprietary Alarm Units (UL1076), NBSX: Household Burglar Alarm System Units (UL1023), UTOU: Control Units and Accessories - Household System Type (UL985) Refer to D8125MUX Operation and Installation Guide (P/N: 36796) for UL UOJZ: Control Units, System (UL864, 9th edition)
	UL UL 864 - Standard for Control Units and Accessories for Fire Alarm Systems (10th edition)

Region	Regulatory compliance/quality marks	
	UL	UL 985 - Household Fire Warning System Units (6th edition)
	CSFM	California State Fire Marshal (see our website)

### Installation/configuration notes

#### Compatible Control Panels

- B9512G/B9512G-E
- B8512G/B8512G-E
- D9412GV4/D7412GV4/D7212GV4
- D9412GV3/D7412GV3/D7212GV3
- D9412GV2/D7412GV2/D7212GV2
- D9412G/D7412G/D7212G
- D9124 Fire Alarm Control Panel
- FPD-7024 Fire Alarm Control Panel

#### Compatibility Multiplex Modules

- DS7432 Series Eight-input Remote Modules
- DS7457i Series Single-zone Input Modules
- DS7460i Dual-zone Input Module
- DS7461i Single-zone Input Module
- DS7465i Input-output Module

#### Compatible Programmers

- D5060 Multiplex Programmer

#### Wiring

Maximum Wire Impedance: 33  $\Omega$

Distance (approximate)	Size
610 m	0.8 mm
1524 m	1.2 mm
2000 ft	22 AWG
5000 ft	18 AWG

#### Control Panel to D8125MUX Module Wiring

The recommended wiring from the control panel to the module is quad (four-wire) cable. Do not use shielded or twisted-pair cable.

Maximum Impedance: 4.05  $\Omega$  at +20°C (+68°F) nominal

Distance (approximate)	Size
76 m	0.65 mm
193 m	1.02 mm
250 ft	22 AWG
600 ft	18 AWG

#### Data Loop Wiring

Use non-shielded wire for data loops. Do not exceed 75 mA on each MUX Bus output.

### Parts included

Quantity	Component
1	Multiplex Bus interface
1	Hardware pack
1	Literature pack

### Technical specifications

#### Environmental Considerations

Relative Humidity:	Up to 93%, non-condensing
Temperature (Operating):	0°C to +49°C (+32°F to +120°F)

#### Properties

Board Dimensions:	14 cm x 8.3 cm x 2.5 cm (5.5 in. x 3.25 in. x 1.0 in.)
-------------------	---

#### Power Requirements

Module current:	128 mA maximum
AUX Power A:	200 mA maximum
AUX Power B:	200 mA maximum
MUX Bus A:	75 mA maximum
MUX Bus B:	75 mA maximum
Total:	678 mA
Voltage:	12 VDC



#### Notice

Battery calculation is module current (128 mA), plus the AUX power load, plus MUX Device load.

#### Trademarks

All hardware and software product names used in this document are likely to be registered trademarks and must be treated accordingly.

### Ordering information

#### D8125MUX Expansion module, Multiplex

Controls two independent buses.

Order number **D8125MUX**

**Represented by:**

**Europe, Middle East, Africa:**  
Bosch Security Systems B.V.  
P.O. Box 80002  
5600 JB Eindhoven, The Netherlands  
Phone: + 31 40 2577 284  
emea.securitysystems@bosch.com  
emea.boschsecurity.com

**Germany:**  
Bosch Sicherheitssysteme GmbH  
Robert-Bosch-Ring 5  
85630 Grasbrunn  
Germany  
www.boschsecurity.com

**North America:**  
Bosch Security Systems, Inc.  
130 Perinton Parkway  
Fairport, New York, 14450, USA  
Phone: +1 800 289 0096  
Fax: +1 585 223 9180  
onlinehelp@us.bosch.com  
www.boschsecurity.us

**Asia-Pacific:**  
Robert Bosch (SEA) Pte Ltd, Security Systems  
11 Bishan Street 21  
Singapore 573943  
Phone: +65 6571 2808  
Fax: +65 6571 2699  
apr.securitysystems@bosch.com  
www.boschsecurity.asia