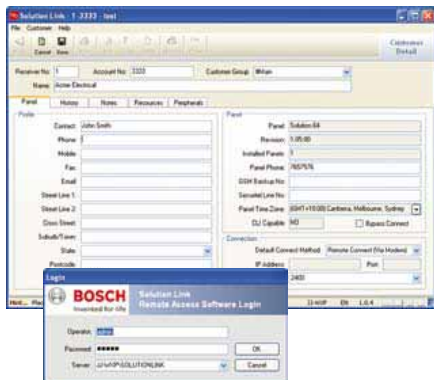


Key Features

- Prox Keypads - Up to 8 Per System
- C.L.I. Enabled Intelli-Connect
- Real Time Clock
- Digital Contrast and Brightness Control
- SolutionLink™ Programming Software
- CID, SIA, Domestic, SMS Reports
- Time and Date Static Keypad Display
- Call Forward On / Call Forward Off
- Senior Watch
- Attractive Modern Keypad Design
- Zone Pulse Count
- Dual Reporting
- Keypad Tamper Option
- Fire Alarm Verification
- Siren Beep & or Strobe Flash for Keyfob
- Remote Diagnostics
- 8 Internal Door Control
- Totally Fuseless Design
- Owner Test Reminder Time
- Service Reminder Time
- Away and 2 Part Operating Modes
- True 1 Amp Power Supply
- Pulse Battery Charger Built-In
- Auto Arming by Area or System
- Auto Adjust Time for Daylight Saving
- Remote Arming, Disarming, Area Control & Output Control
- Chime Alarm
- Automatic Battery Testing
- Distinctive Siren Tone for Fire Alarms
- Open / Close Reports By User
- Dual Reporting by Event Type
- Multi-Vendor Wireless Compatible
- Fire, Panic and Medical Alarm Triggers
- Auto Arm Pre Alert
- Programmable EOL Resistor Value
- Single Key Quick Arm Function
- Unique ICON User Interface
- Status ICONs Display At All Times
- 8 digit PIN Codes for High Security
- Sensor Watch
- Telco Line Fail Detection
- Automatic Smoke Detector Reset: Upon Disarming
- Dedicated On, Off and Part Keys



SolutionLink™ Hi-Speed upload / download

You can program the Solution 16i either via the code pad or using a PC loaded with SolutionLink™ software.

Built on SQL database technology, the Windows based SolutionLink™ software offers single and multi-user operation, with the ability to control the functions each operator can perform via programmable authority levels. All programming options and parameters are organised to closely reflect the panel's menu structure, which reduces learning time and improves efficiency. Reports generated in SolutionLink™ can be sent directly to any Windows printer, or to industry standard PDF format, making it easy to email reports to your customers or the control room.

SolutionLink™ provides both a summary and a detailed view for all of the main programming options. In the detailed view, focus is applied to a specific input, user, area or output. The summary view provides an overview of the programming for all inputs, users, areas and outputs in a spreadsheet style, making it easy to see programming configuration across the entire system.

The code pad simulator makes remote support simple and easy providing a live and interactive interface directly to the code pad display.



Bosch Security Systems Pty Ltd
For more information, please visit
www.boschsecurity.com.au

© Bosch Security Systems, 2007
Modifications reserved
Printed in Australia
SKU#926332

Bosch Security Systems Sales Offices:

AUSTRALIA	NEW ZEALAND
SYDNEY 02 9672 1777	AUCKLAND 09 526 1060
BRISBANE 07 3252 9920	WELLINGTON 04 802 5033
MELBOURNE 03 9558 8088	CHRISTCHURCH 03 377 3444
PERTH 08 9240 5455	

Solution 16i

Taking LCD icon technology to new levels.

Intrusion Control Panel



BOSCH
Invented for life



Welcome to the new **Solution 16i** Intrusion Control Panel.

All the features you know, now with an easy-to-read icon code pad. Using fixed text and easy-to-recognise icons, the new Solution 16i code pad takes proven Bosch LCD icon technology to a new level.



System status can be determined at a glance during operation, with menu locations and parameter information clearly displayed during programming. No longer are technicians left to determine parameters by interpretation of icons. No longer will you be left wondering exactly which memory location you are looking at.

Feature Rich

The Solution 16i includes all the standard security features you expect from a panel in this class. Up to 48 variable length PIN codes can be assigned and each user can also be assigned an RF keyfob and token if required. Schedules allow you to control who accesses the system and when. New, larger 45° off set terminals makes cable installation easier.

Proximity Code Pad

An enhanced version of the Solution 16i code pad incorporates a built-in proximity reader allowing users to simply present their token to the code pad to arm / disarm the system and / or unlock a door. Children and the elderly will find this feature extremely easy to use as no pin is required for normal operation. A maximum of 8 code pads in any combination (proximity enabled or not) are available per system.



Partitioning

The Solution 16i supports up to 4 individual areas / partitions, with no restriction on the number of individual zones that can belong in an area. A common area can be configured to allow users to access a common code pad, which is especially useful in multi-tenant situations.

All Solution 16i code pads are area "aware" and include area icons, so you don't need to purchase dedicated area or master code pads when partitioning. This flexibility allows a user with the appropriate authority to view and operate other areas, which they can access from any code pad.

Expandability

The Solution 16i can be expanded to 16 wired or wireless zones using zone expanders and / or serial radio receivers. The panel supports multi-vendor wireless devices, allowing you to select the most appropriate products for each installation. This flexibility also allows you to expand a system without the need to consider replacing the existing security equipment. Hand-held keyfob transmitters are available to arm and disarm the system, control a garage door or security gate.

Flexible Reporting Options

CID, SIA, DOMESTIC and SMS Text Reporting formats are all standard out of the box and the dual reporting feature allows you to select which reports are sent to which route and in what format.

Open / close reporting can be selected individually for each user and area on the panel, allowing the owner to monitor cleaner access, children returning home from school, or access to a particular restricted area – all via mobile phone with SMS text. All messages clearly detail the specific event.

Reliable Performance

The Solution 16i includes integrated high efficiency 1 Amp power supply with battery pulse charge which provides ample ancillary power from a standard plug pack transformer.

Four, Hi-Current, fault tolerant programmable outputs are provided as standard with the ability to expand outputs to a maximum of 8 in total if required. All power terminals are protected with maintenance free resetting fuses, and all LAN based modules have integrated voltage and temperature diagnostic capability, which can also be remotely interrogated for optimum convenience.

Service and test interval timers are included allowing you to set appropriate time intervals for walk testing and service call reminders.

CLI Intelli – Connect

The CLI Intelli-Connect function virtually eliminates end user call pick-up while establishing a remote programming session by answering the incoming call immediately if the installers CLI number is recognised by the panel.

Telephone Line Fail Monitor

A telephone line fault will register when the system detects that the telephone line has been disconnected from the control panel. The system can be programmed to sound if the telephone line is cut whilst the panel is armed.

Quality Assured

Bosch products are manufactured in Australia using AS/ NZS ISO9001 Quality management Systems to ensure long term performance and reliability. For your peace of mind all products are 100% tested and are covered by our 3 Year Back to Base warranty.

