

BIS Compact basic package



Comprehensive software offering easy entry into the world of building integration systems at an attractive price. BIS Compact enhances small-to-medium fire or intrusion detection systems with CAD graphics and professional alarm management.

System overview

BIS Compact is a sophisticated management and visualization solution for small to medium fire or intrusion detection systems.

An optional video extension is available to enhance your installation with powerful video functionality for alarm-triggered or continuous surveillance and recording.

Functions

Operation

The system's main task is to operate as the alarm-monitoring and control center for a site. Its graphical interface is designed to help the operator grasp the extent and urgency of an occurrence quickly, and to take prompt and effective action.

The heart of the system, the State Machine, monitors all incoming events and operator requests, and takes the actions prescribed, thus unburdening the operators.

Features in detail

- Device condition counters to provide an overview of the condition of subsystems across the entire system
- Mobile access from smartphones and tablet PCs
- Temporary blocking of detectors, with protocolled reminder function

- ▶ Sophisticated alarm and security management for fire or intrusion protection
- ▶ All relevant information in one user interface, and intuitive operation via interactive maps and HTML5 action plans
- ▶ Ergonomic central console guides and unburdens the operator
- ▶ Full event log and audit trail for forensic investigations

- Message processing and alarm display
- Alarm queue with up to 5000 simultaneous alarm events and detailed alarm information



- Web-server-based platform allows client workstations to connect to BIS via just the browser.
- Automated workflows
- Huge library of standardized detector icons in standard vector format including color, event and control definitions
- Direct control and monitoring of detectors via the context menus of their icons in the location maps
- Direct control and monitoring of detectors via the logical tree-structure (e.g. building, floor, room) of a site, with hyperlinks to photos, manuals, instructions
- Both manual and automatized (rule-based) control of the connected subsystem and its peripherals
- Monitoring and control of the connected subsystem, including its peripherals (detectors) and virtual "devices" (operator, server, ...), from a logical hierarchy that provides information about address, status, type, location and notes.



- Ability to provide specific information to the operator in the form of “miscellaneous” hypertext documents, including text, bitmaps, video images, etc.
- Location overview with hyperlinks to photos, manuals, instructions
- Event log to ensure all events are completely documented (including messages received and actions taken)
- Audit trail to ensure that all configuration changes are completely documented in terms of who did what when
- Reporting services to quickly create customized and interactive reports from the event log
- Online Help

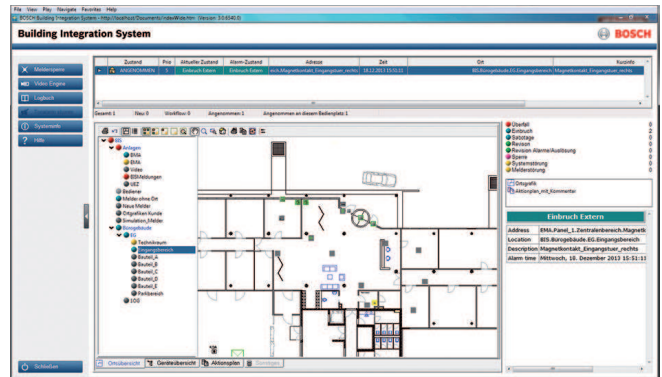
Action plans

BIS Compact displays predefined action plans to ensure optimal guidance to operators in stress situations, such as fire or intrusion alarms.



- Alarm-dependent action plans or workflows provide to the operator detailed, event-dependent information such as standard operating procedures, and live images when using the video extension.
- With the deletion of an alarm message an unmodifiable snapshot of the displayed action plan is attached to the event log. This ensures accountability by providing a trace of all steps performed by the operator during the alarm response.

Location maps



- Location maps are a visualization of premises e.g. floors, areas or rooms, based on the popular AutoCAD vector-graphics format. Detectors and other devices are represented by colored, animated icons that provide direct control via their context menus. In the case of an alarm the system zooms automatically to the location in the map where it was triggered.
- A location tree provides entry points to the location map and its graphical navigation functions (pan, zoom).
- Alarm-dependent layer control allows the display of additional graphical information for specific situations, e.g. escape routes in case of fire alarms.

Installation/configuration notes

As of BIS version 4.0 the delivery contains an authorization key to activate the BIS software which you download as normal from the internet.

BIS Compact in figures

Addresses, detectors, control elements etc. which can be processed in the entire system	1000
Max. number of BIS line states	100,000
Number of events per second	1000 (continuous, with higher peaks)
Max. number of network printers in the integrated network	20
Max number of concurrent operators	1

Technical specifications

Minimum technical requirements for the login server

As of BIS version 4.3

Intel i5 CPU or better with more than 3GHz

8 GB RAM

80 GB of free HD space

100 Mbit network card (PCI)

1 free USB port for installation media, if software not downloaded

Graphical adapter with 1280 x 1024, 32 k colors, 256MB dedicated memory with OpenGL 1.2 or later

Windows 7 SP1 (32 or 64 Bit, but not Starter/Home Edition),

Windows 8.1 (64 bit, Pro, Enterprise)

Windows 10 Enterprise LTSB (64 bit)

Microsoft Internet Explorer 9, 10 or 11 in compatibility mode

Subject to technical changes.

Ordering information

BIS-BCMP-BAS48 Basic license

License for the BIS Compact product

Order number **BIS-BCMP-BAS48 | F.01U.386.781**

BIS-FCMP-GEN48 Upgrade to full version

License for an upgrade of BIS Compact to BIS Standard

Order number **BIS-FCMP-GEN48 | F.01U.386.783**

BIS-FCMP-GEN47 Upgrade to full version

License for an upgrade of BIS Compact to BIS Standard

Order number **BIS-FCMP-GEN47 | F.01U.363.042**

BIS-FCMP-GEN46 Upgrade to full version

License for an upgrade of BIS Compact to BIS Standard

Order number **BIS-FCMP-GEN46 | F.01U.351.065**

BIS-FCMP-GEN45 Upgrade to full version

License for an upgrade of BIS Compact to BIS Standard

Order number **BIS-FCMP-GEN45 | F.01U.346.094**

BIS-FCMP-GEN44 BIS Compact Upgrade auf BIS Standard

License for an upgrade of BIS Compact to BIS Standard

Order number **BIS-FCMP-GEN44 | F.01U.333.293**

BIS-FCMP-GEN43 BIS Compact Upgrade auf BIS Standard

License for an upgrade of BIS Compact to BIS Standard

Order number **BIS-FCMP-GEN43 | F.01U.327.582**

BIS-FCMP-VIE46 Video extension

Extension to BIS Compact offering powerful video functionality for alarm-triggered or continuous surveillance and recording.

Order number **BIS-FCMP-VIE46 | F.01U.351.064**

BIS-FCMP-VIE45 Video extension

Extension to BIS Compact offering powerful video functionality for alarm-triggered or continuous surveillance and recording.

Order number **BIS-FCMP-VIE45 | F.01U.346.084**

BIS-FCMP-VIE44 BIS Compact 4.4 Video Extension

Extension to BIS Compact offering powerful video functionality for alarm-triggered or continuous surveillance and recording.

Order number **BIS-FCMP-VIE44 | F.01U.333.282**

BIS-FCMP-VIE43 BIS Compact 4.3 Video Extension

Extension to BIS Compact offering powerful video functionality for alarm-triggered or continuous surveillance and recording.

Order number **BIS-FCMP-VIE43 | F.01U.327.523**

BIS-FCMP-VIE42 License for video extension

Extension to BIS Compact offering powerful video functionality for alarm-triggered or continuous surveillance and recording.

Order number **BIS-FCMP-VIE42 | F.01U.320.418**

Represented by:

Europe, Middle East, Africa:
Bosch Security Systems B.V.
P.O. Box 80002
5600 JB Eindhoven, The Netherlands
Phone: + 31 40 2577 284
emea.securitysystems@bosch.com
emea.boschsecurity.com

Germany:
Bosch Sicherheitssysteme GmbH
Robert-Bosch-Ring 5
85630 Grasbrunn
Germany
www.boschsecurity.com

North America:
Bosch Security Systems, LLC
130 Perinton Parkway
Fairport, New York, 14450, USA
Phone: +1 800 289 0096
Fax: +1 585 223 9180
onlinehelp@us.bosch.com
www.boschsecurity.us

Asia-Pacific:
Robert Bosch (SEA) Pte Ltd, Security Systems
11 Bishan Street 21
Singapore 573943
Phone: +65 6571 2808
Fax: +65 6571 2699
apr.securitysystems@bosch.com
www.boschsecurity.asia