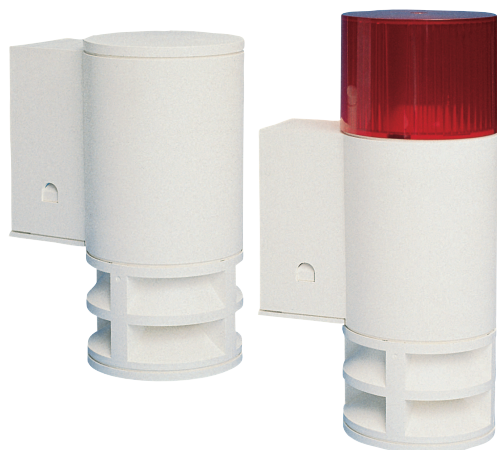


BES Signaling Devices



Bosch external signaling devices are signaling devices equipped with an integrated sound generator for acoustic alarm or additionally with red LED lamps for visual alarm.

Functions

The BES signaling devices signal all alarms of the system. The connection to the security system is monitored. If the connection is interrupted, an alarm is triggered.

The devices can be mounted on walls. They are secured with a wall tamper that triggers an alarm if the device is disassembled or broken off from the wall.

Regulatory information

Region	Regulatory compliance/quality marks	
Europe	CE	BES
Germany	VdS	G 197023, C IUI-BES-A
	VdS	G 197024, C IUI-BES-AO

Installation/configuration notes

The sound level of the signaling device is 100 dB and has to be 10 dB above the background level. Therefore, the signaling device can be used for environments with a background level of up to 90 dB.



- ▶ Activation and control of the signaling is monitored
- ▶ Wall Mounting
- ▶ Wall tamper

Technical specifications

Mechanical

Housing material	UV-resistant PVC
Color	Pure white, RAL 9010

Environmental

Minimum operating temperature in °C	-25
Maximum operating temperature in °C	65
Protection class	DIN 40050: IP33 DIN 40040: HUF
Environmental class	IV

Ordering information

IUI-BES-AO BES Siren and strobe signaling device

For acoustic and visual signaling of an alarm and monitored activation and control of the signaling.
Order number **IUI-BES-AO** | **F.01U.166.054**
F.01U.412.108

IUI-BES-A BES Siren signaling device

For acoustic signaling of an alarm and monitored activation and control of the signaling.
Order number **IUI-BES-A** | **3.002.102.452**
F.01U.411.658

ISP-UNV-WTC Universal wall tamper contact, 2pcs

Universal wall tamper contact.
Order number **ISP-UNV-WTC** | **F.01U.412.898**