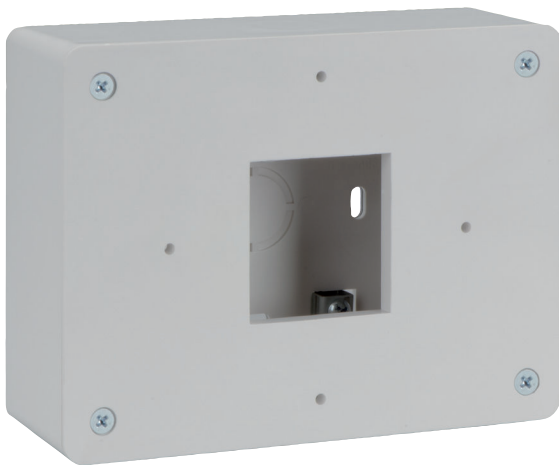


B56 Keypad surface mount box

www.boschsecurity.com



BOSCH
Invented for life



- ▶ Protects keypad wiring for installations using conduit
- ▶ Includes an integrated bubble level for easy installation
- ▶ Front cover mounting of keypad for easy installation of the keypad

Certifications and approvals

Region	Certification
USA	CSFM see our website

Installation/configuration notes

Compatibility

B915/B915I Basic Keypad (SDI2)
 B920 Two-line Alphanumeric Keypad (SDI2)
 B921C Two-line Capacitive Keypad
 B930 ATM Style Alphanumeric Keypad (SDI2)
 B942 Touch screen Keypad (SDI2)
 B925F Fire Keypad
 B926F Fire Keypad

Parts included

Quantity	Component
1	Mounting box
1	Hardware pack
1	Installation manual

Technical specifications

Dimensions	5.5 in. x 4.1 in. x 1.7 in. (140 mm x 105 mm x 44 mm)
Weight	0.44 lb. (0.2 kg)
Material	ABS (Acrylonitrile Butadiene Styrene) plastic and CRS G40 electro galvanized steel
Color	White

Ordering information

Keypad surface mount box

Surface mount box for mounting a keypad to concrete or block.

Order number **B56**