

Technical Bulletin

RPS account upgrade to B6512



<p>Issue severity</p> <p><input type="checkbox"/> High. Act immediately</p> <p><input checked="" type="checkbox"/> Medium. Bosch Security Systems strongly recommends you take the action(s) described below.</p> <p><input type="checkbox"/> Low. Advisory</p>	<p>Products affected</p> <ul style="list-style-type: none"> ▶ RPS version 6.03 ▶ RPS-LITE version 6.03 ▶ B6512 control panel ▶ B5512 control panel ▶ B4512 control panel ▶ B3512 control panel
--	---

August 9, 2016

Issue

Using RPS or RPS-LITE version 6.03 to upgrade a B3512, B4512, or B5512, panel account to a B6512 account, the Log % Full parameter is corrupted in the upgraded account.

Resolution

This issue will be resolved in version 6.04 of RPS and RPS-LITE.

Workaround

To use RPS v6.03 to update a B3512, B4512, or B5512 account to a B6512 account follow the steps below:

First create a backup of the account in the Panel List:

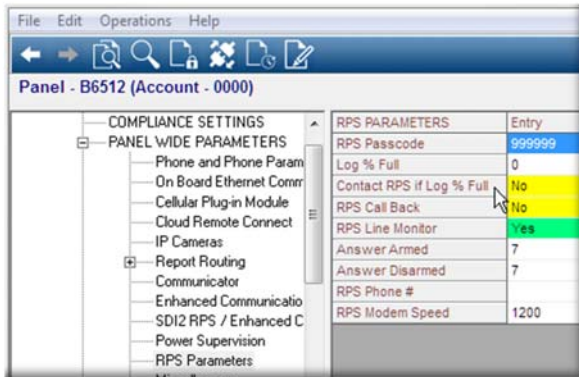
1. Right-click the panel account you wish to upgrade. Select Export Selection.
2. Import the backup account. Click File to open the file menu. Select Import. The import process asks you to rename the file. Append “_backup” to the original file name.

Next, upgrade the original panel account to a B6512 account:

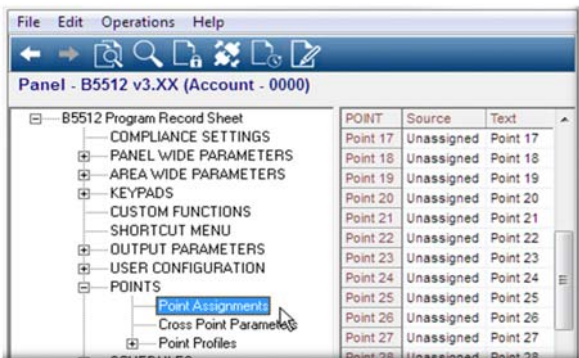
1. Right-click on the original panel account in the Panel List. Select Open Panel Data – View.
2. Click Edit.
3. Click the Panel Type field. Select B6512.
4. Click OK.

Finally, edit the upgraded account to correct the Log % Full parameter. For accounts upgraded from a B5512 account, correct the parameters in Point Assignments for points 17 and greater.

Use the backup account as a reference.



For B5512 accounts, all parameters in Point Assignments for points 17 and greater are set to their defaults in the upgraded account.



Bosch Security Systems, Inc.

130 Perinton Parkway

Fairport, NY 14450 USA

www.boschsecurity.com