

ATM POS Service



BOSCH

en Installation Manual

Table of contents

1	Limitations	4
2	Prerequisites	5
3	Install the ATM POS Service	6
4	Start or Stop ATM POS Service	9
5	Uninstall ATM POS Service	10

1 Limitations

1. The **ATM POS Service** does not support dynamic or runtime configuration changes. In case of any configuration changes, the user first needs to **stop** the ATM POS Service. Use the **BoschATMPOSConfiguration** tool to modify and to save the configuration changes in the **Service.xml** file under **C:\Program Files (x86)\Bosch\ATM POS Service**. **Restart** the **ATM POS Service**.
2. Multiple BVMS configured ATM Bridges (remote or local) in the Divar IP are not supported.
3. Before uninstalling the ATM POS Service, please back up the Device Configuration file (Service.xml). This file is deleted during the uninstall process.
4. To support multiple ATM device configurations, the ATM POS Device Port must be unique for each ATM device.
5. The ATM POS Service acts as a data conduit only. It does no data filtering into the BVMS system beyond what is covered by the DeviceID option.

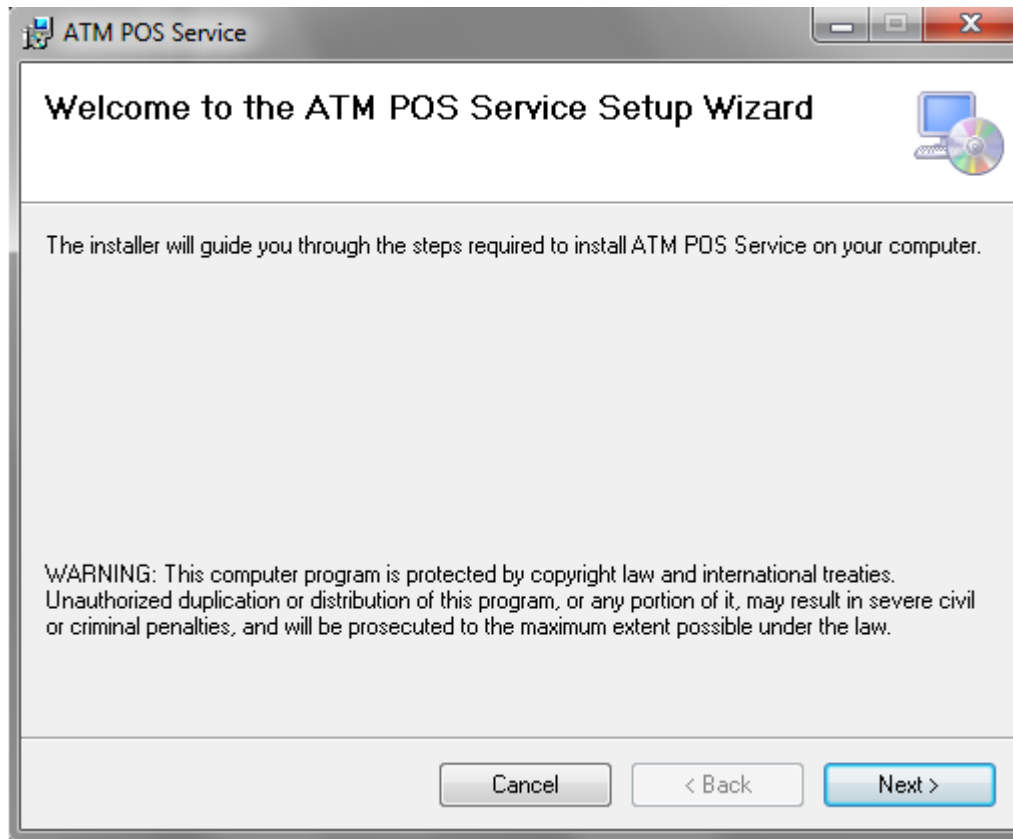
2 Prerequisites

The following software packages should be installed on the Target Server Machine:

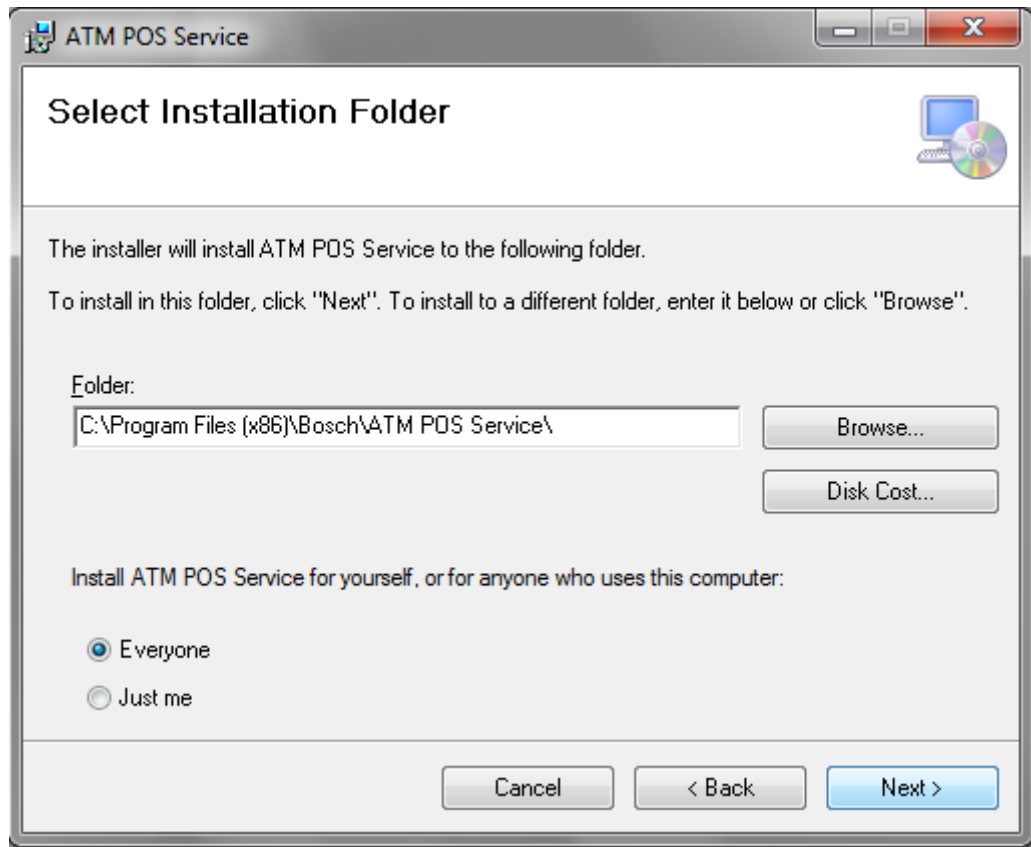
- Microsoft .NET 4.0.
- VC++ 2010 SP1 Redistributable

3 Install the ATM POS Service

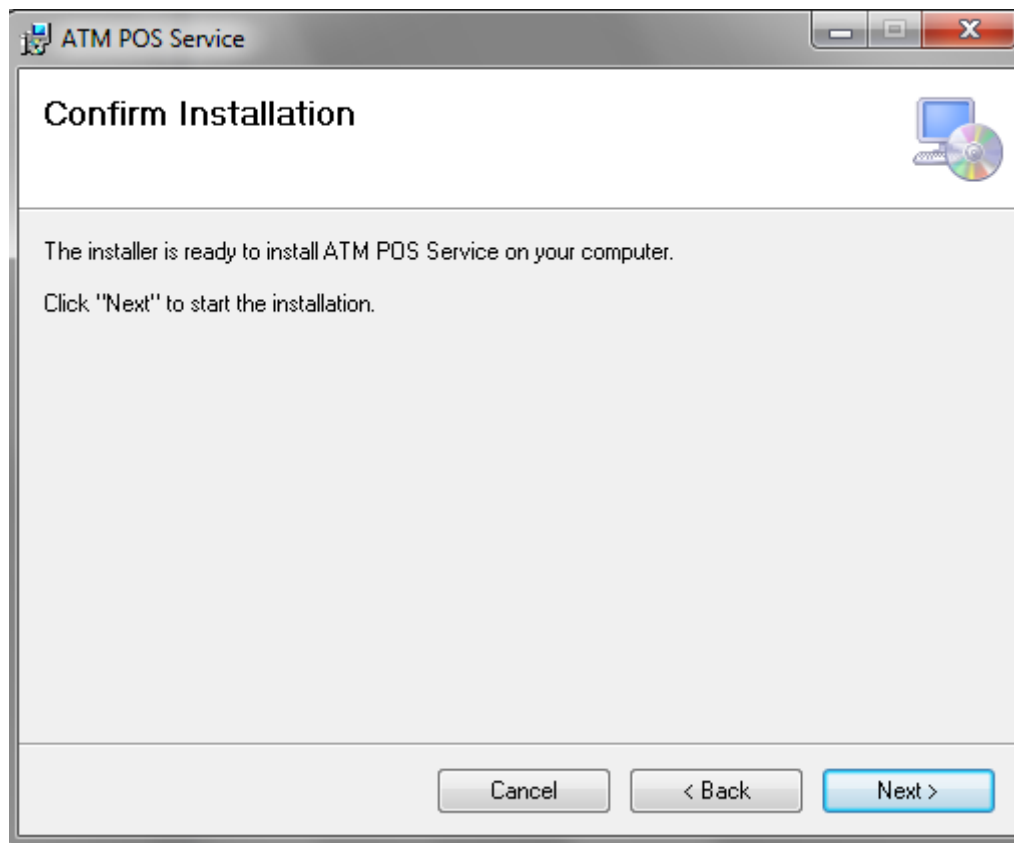
1. Run **Setup.msi** on **Target Server Machine**. An ATM POS Service Setup Wizard dialog box should appear.



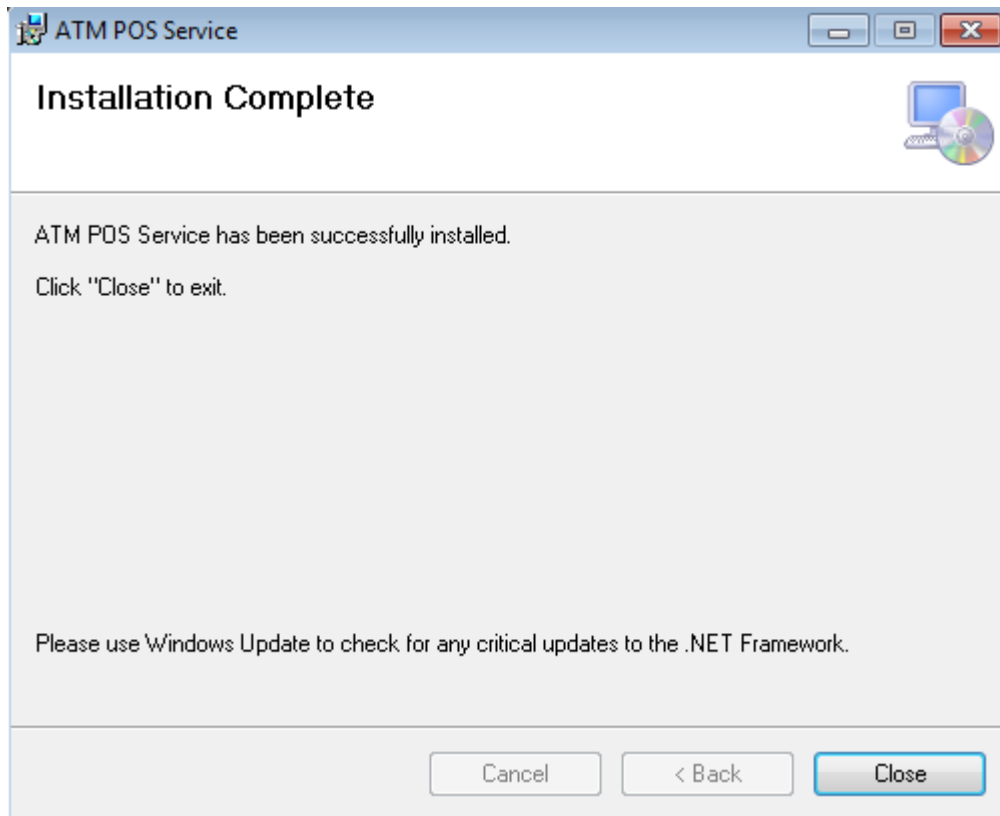
2. Click **Next** to select the installation selection folder. The folder should default to **C:\Program Files (x86)\Bosch\ATM POS Service**.



3. Click **Next** to continue the installation.



- Click **Next** to continue the installation.

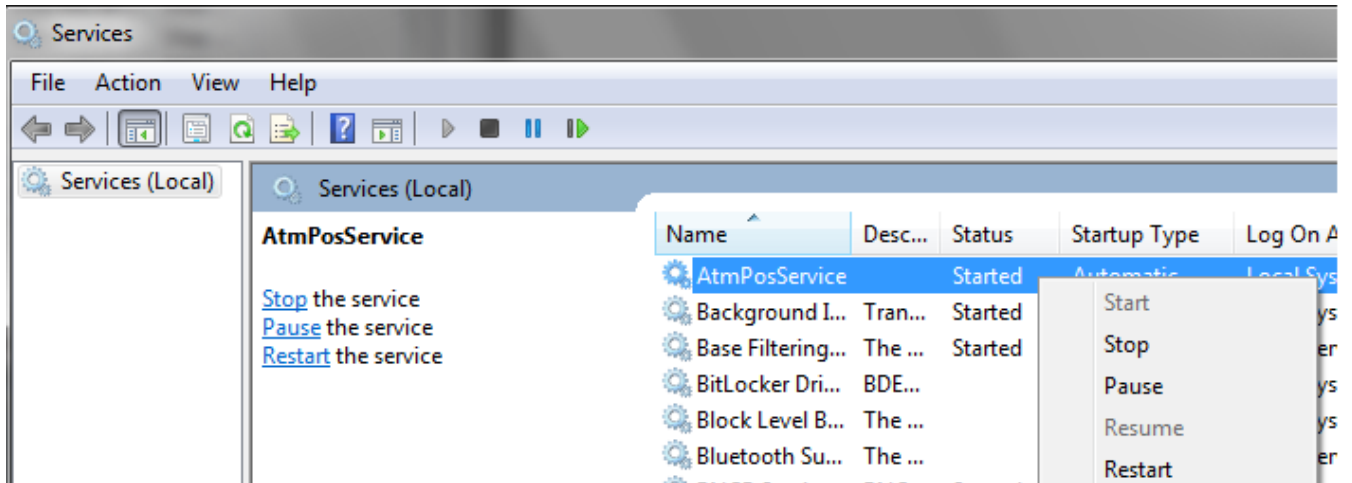


- Click **Close** to complete the installation.

4 Start or Stop ATM POS Service

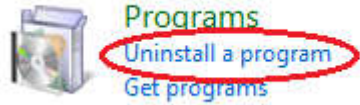
Prerequisite: Only start the ATM POS Service after complete configuration of the ATM POS in Service.xml. The BoschATMPOSConfiguration tool can be used to for the configuration changes that are described in the next section.

1. Start Task Manager.
2. Click the **Services** tab.
3. Click the Services button at the bottom to display the local services.
4. Select AtmPosService. Right click to **Start/Stop/Pause/Resume/Restart** the service.

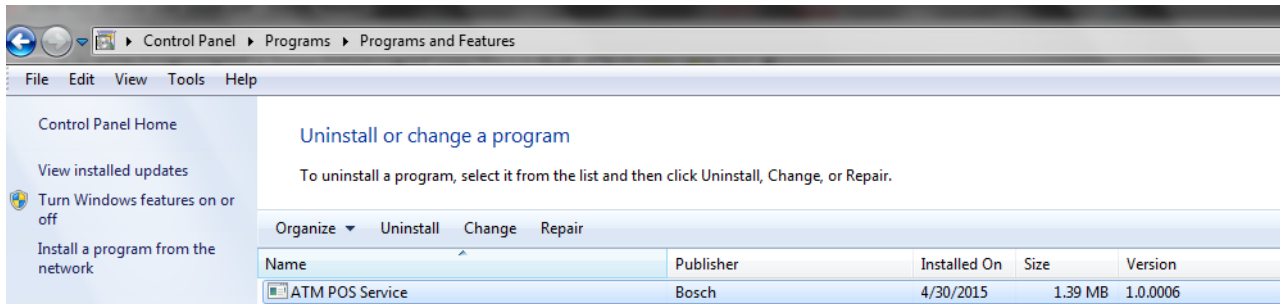


5 Uninstall ATM POS Service

1. Go to the Control Panel. Select the option **Uninstall a program** under **Programs** group.



2. Select ATM POS Service. Click Uninstall button to start the un-installation process. Wait until un-installation to complete.



Bosch Security Systems, Inc.

850 Greenfield Road
Lancaster, PA, 17601
USA

www.boschsecurity.com

© Bosch Security Systems, Inc., 2015

Bosch Sicherheitssysteme GmbH

Robert-Bosch-Ring 5
85630 Grasbrunn
Germany