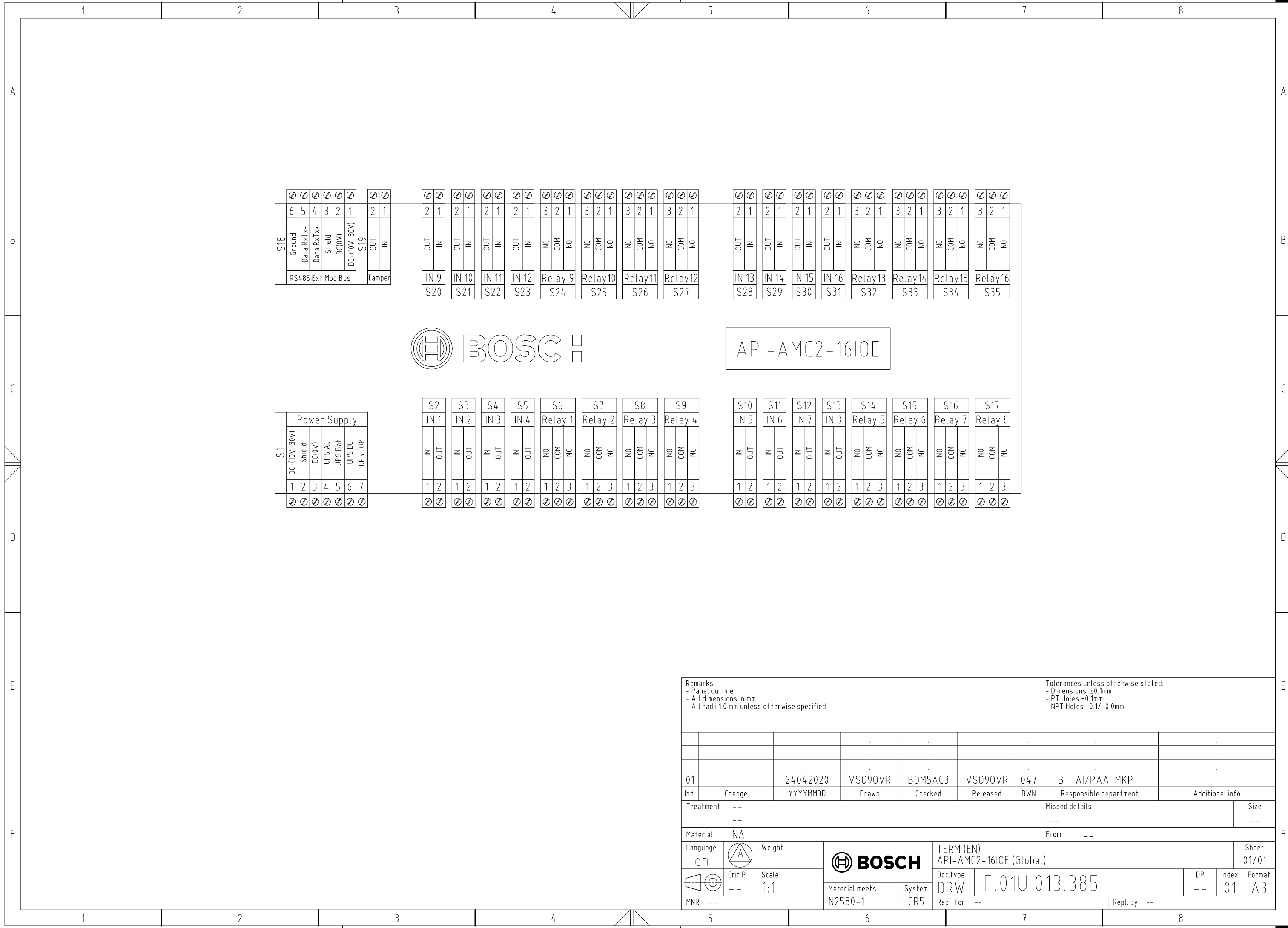


© Robert Bosch GmbH. All rights reserved. Also regarding any disposal, exploitation, reproduction, editing, distributing, as well as in the event of applications for industrial property rights.



Remarks: - Panel outline - All dimensions in mm - All radii 1.0 mm unless otherwise specified							Tolerances unless otherwise stated: - Dimensions: ±0.1mm - PT Holes ±0.1mm - NPT Holes +0.1/-0.0mm			
01	-	24.04.2020	VS090VR	B0M5AC3	VS090VR	04.7	BT-AI/PAA-MKP	-		
Ind.	Change	YYYYMMDD	Drawn	Checked	Released	BWN	Responsible department	Additional info		
Treatment	--						Missed details		Size	
							--		--	
Material	NA						From		--	
Language	eN	Weight	--		BOSCH			TERM (EN)		
								API-AMC2-1610E (Global)		Sheet
		Crit P.	Scale	1:1		Doc.type		DP	Index	Format
						DRW		--	01	A3
MNR	--	Material meets		System		Repl. for		Repl. by		
		N2580-1		CR5		--		--		