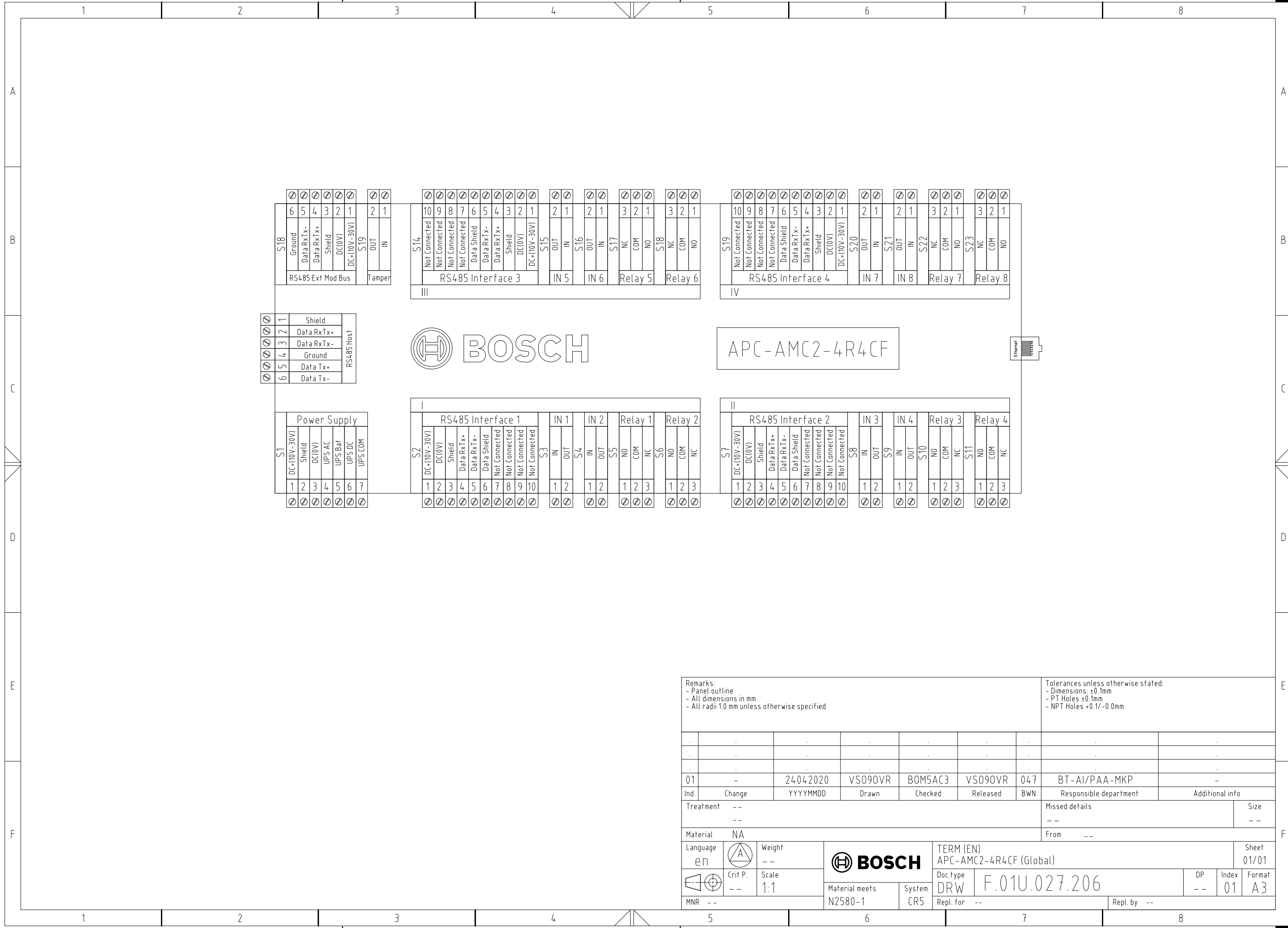


© Robert Bosch GmbH. All rights reserved. Also regarding any disposal, exploitation, reproduction, editing, distributing, as well as in the event of applications for industrial property rights.



| | | | | | | | | | |
|--|---------|------------------------|---------|------------|----------|--------------|---|-----------------|--|
| Remarks: - Panel outline - All dimensions in mm - All radii 1.0 mm unless otherwise specified | | | | | | | Tolerances unless otherwise stated: - Dimensions: ±0.1mm - PT Holes ±0.1mm - NPT Holes +0.1/-0.0mm | | |
| 01 | - | 24.04.2020 | VS090VR | B0M5AC3 | VS090VR | 047 | BT-AI/PAA-MKP | - | |
| Ind. | Change | YYYYMMDD | Drawn | Checked | Released | BWN | Responsible department | Additional info | |
| Treatment | -- | Missed details | | | | | Size | | |
| | -- | | | | | | -- | | |
| Material | NA | | | | | | From -- | | |
| Language | en | Weight | -- | | | | Sheet 01/01 | | |
| | Crit P. | Scale | 1:1 | | | | Format A3 | | |
| | -- | -- | | | | | | | |
| MNR | -- | Material meets N2580-1 | | System CR5 | | Repl. for -- | | Repl. by -- | |
| | | | | | | | TERM (EN) APC-AMC2-4R4CF (Global) | | |
| | | | | | | | Doc.type DRW F.01U.027.206 | | |
| | | | | | | | DP -- | Index 01 | |