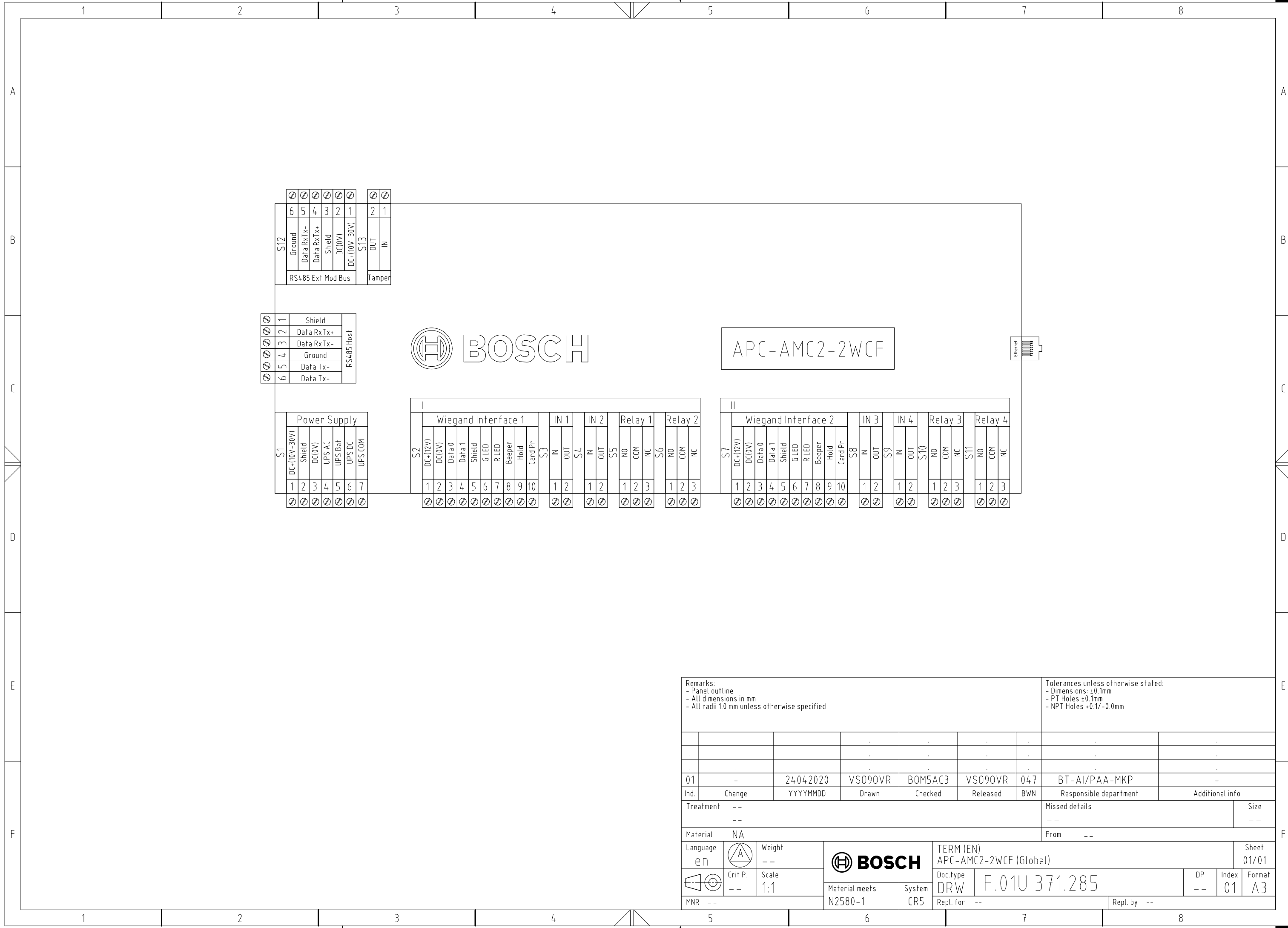


© Robert Bosch GmbH. All rights reserved. Also regarding any disposal, exploitation, reproduction, editing, distributing, as well as in the event of applications for industrial property rights.



S12	6	⊗	Ground
	5	⊗	Data RxTx-
	4	⊗	Data RxTx+
	3	⊗	Shield
	2	⊗	DC(0V)
RS485 Ext Mod Bus			
S13	2	⊗	OUT
	1	⊗	IN
Tamper			

RS485 Host	1	⊗	Shield
	2	⊗	Data RxTx+
	3	⊗	Data RxTx-
	4	⊗	Ground
	5	⊗	Data Tx+
	6	⊗	Data Tx-

S1	Power Supply						
	1	⊗	DC+(10V-30V)				
	2	⊗	Shield				
	3	⊗	DC(0V)				
	4	⊗	UPS AC				
	5	⊗	UPS Bat				
	6	⊗	UPS DC				
7	⊗	UPS COM					

S2	Wiegand Interface 1									
	1	⊗	DC+(12V)							
	2	⊗	DC(0V)							
	3	⊗	Data 0							
	4	⊗	Data 1							
	5	⊗	Shield							
	6	⊗	GLED							
	7	⊗	RLED							
	8	⊗	Beeper							
	9	⊗	Hold							
10	⊗	CardPr								
S3	1	⊗	IN							
	2	⊗	OUT							
S4	1	⊗	IN							
	2	⊗	OUT							
S5	1	⊗	NO							
	2	⊗	COM							
	3	⊗	NC							
S6	1	⊗	NO							
	2	⊗	COM							
	3	⊗	NC							

S7	Wiegand Interface 2									
	1	⊗	DC+(12V)							
	2	⊗	DC(0V)							
	3	⊗	Data 0							
	4	⊗	Data 1							
	5	⊗	Shield							
	6	⊗	GLED							
	7	⊗	RLED							
	8	⊗	Beeper							
	9	⊗	Hold							
10	⊗	CardPr								
S8	1	⊗	IN							
	2	⊗	OUT							
S9	1	⊗	IN							
	2	⊗	OUT							
S10	1	⊗	NO							
	2	⊗	COM							
	3	⊗	NC							
S11	1	⊗	NO							
	2	⊗	COM							
	3	⊗	NC							

Remarks: - Panel outline - All dimensions in mm - All radii 1.0 mm unless otherwise specified							Tolerances unless otherwise stated: - Dimensions: ±0.1mm - PT Holes ±0.1mm - NPT Holes +0.1/-0.0mm			
01	-	24.04.2020	VS090VR	BOM5AC3	VS090VR	047	BT-AI/PAA-MKP	-		
Ind.	Change	YYYYMMDD	Drawn	Checked	Released	BWN	Responsible department	Additional info		
Treatment	--	--	Missed details				Size	--		
Material	NA						From	--		
Language	en	Weight	--	TERM (EN) APC-AMC2-2WCF (Global)				Sheet 01/01		
MNR	--	Crit P.	--	Scale	1:1	Doc.type DRW		DP	Index	Format
		Material meets N2580-1		System	CR5	F.01U.371.285		--	01	A3
Repl. for						--	Repl. by			--