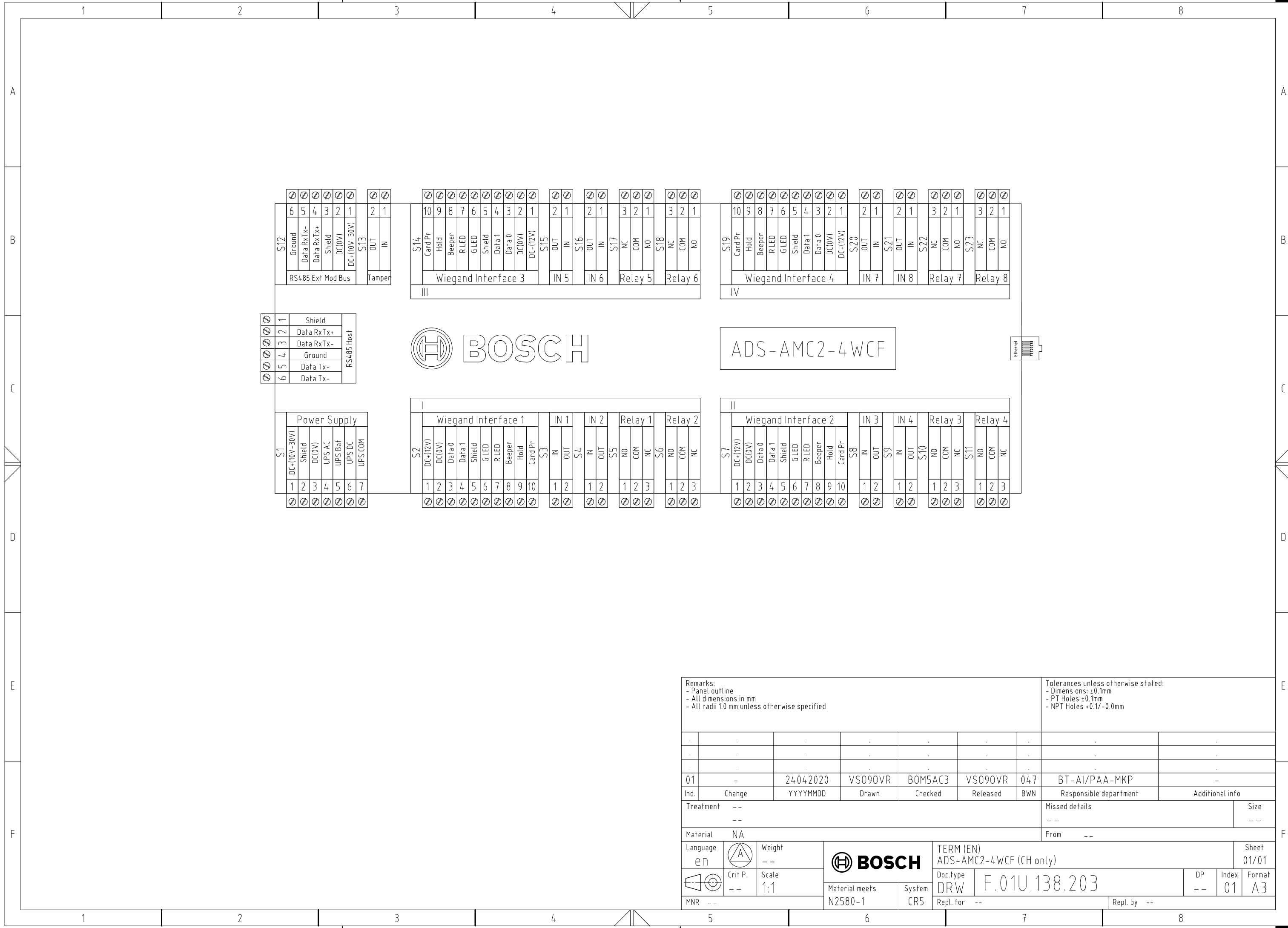


© Robert Bosch GmbH. All rights reserved. Also regarding any disposal, exploitation, reproduction, editing, distributing, as well as in the event of applications for industrial property rights.



| | | | | | | | | | | | | | |
|---|--------|----------------|---------|--------------|----------|-------------------------------|--|-----------------|-------|-------|----|--------|----|
| Remarks: - Panel outline - All dimensions in mm - All radii 1.0 mm unless otherwise specified | | | | | | | Tolerances unless otherwise stated: - Dimensions: ±0.1mm - PT Holes ±0.1mm - NPT Holes +0.1/-0.0mm | | | | | | |
| 01 | - | 24042020 | VS090VR | B0M5AC3 | VS090VR | 047 | BT-AI/PAA-MKP | - | | | | | |
| Ind. | Change | YYYYMMDD | Drawn | Checked | Released | BWN | Responsible department | Additional info | | | | | |
| Treatment | -- | Missed details | | | | | Size | -- | | | | | |
| Material | NA | | | | | | From | -- | | | | | |
| Language | en | Crit P. | Scale | BOSCH | | | TERM (EN) ADS-AMC2-4WCF (CH only) | | Sheet | 01/01 | | | |
| MNR | -- | Material meets | N2580-1 | System | CR5 | Doc.type DRW F.01U.138.203 | | DP | -- | Index | 01 | Format | A3 |
| Repl. for | | | | | | -- | Repl. by | | | | | -- | |